

## Product datasheet for **TA365153S**

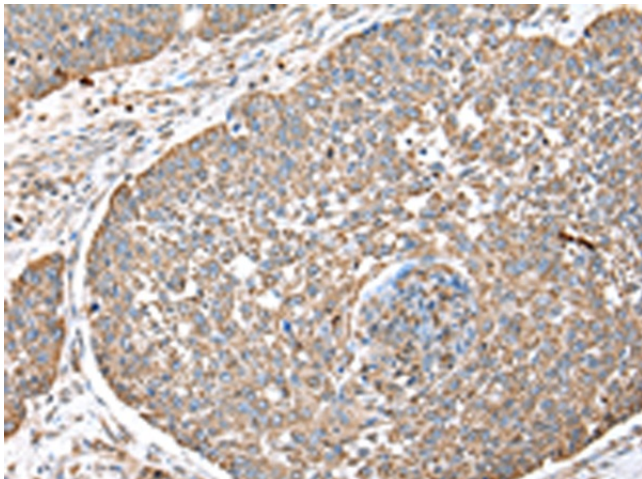
### WDR85 (DPH7) Rabbit Polyclonal Antibody

#### Product data:

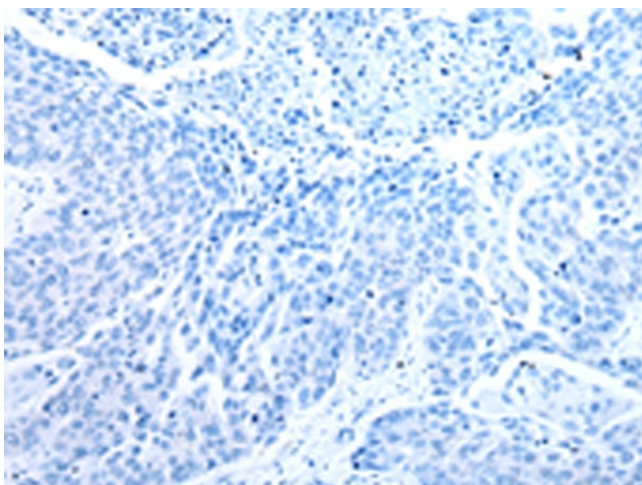
Product Type:	Primary Antibodies
Applications:	IHC
Recommended Dilution:	IHC: 30-150 Positive control: Human lung cancer Predicted cell location: Cytoplasm
Reactivity:	Human
Host:	Rabbit
Isotype:	IgG
Clonality:	Polyclonal
Immunogen:	Fusion protein of human DPH7
Formulation:	pH7.4 PBS, 0.05% NaN <sub>3</sub> , 40% Glycerol
Purification:	Antigen affinity purification
Conjugation:	Unconjugated
Storage:	Store at -20°C.
Stability:	1 year
Gene Name:	diphthamide biosynthesis 7
Database Link:	<a href="#">Entrez Gene 92715 Human Q9BTV6</a>
Background:	WDR85 is a WD repeat-containing protein that plays a role in the first step of diphthamide biosynthesis (Carette et al., 2009 [PubMed 19965467]).
Synonyms:	C9orf112; RP11-48C7.3; RRT2; WDR85



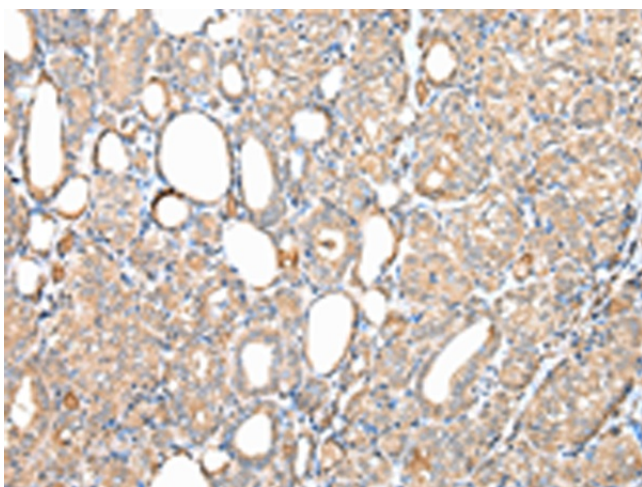
[View online »](#)

**Product images:**

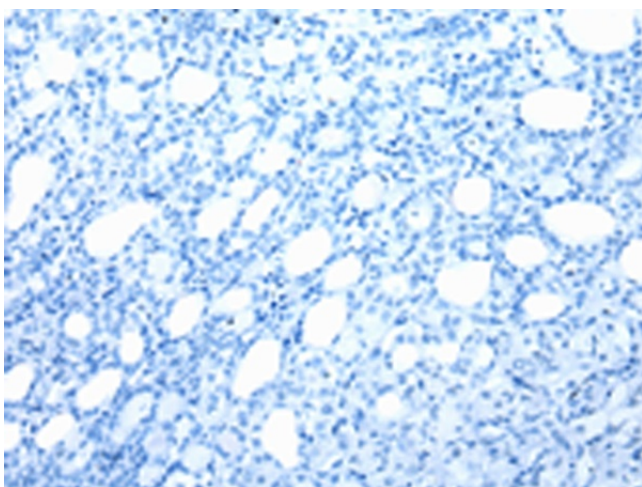
Immunohistochemistry of paraffin-embedded Human lung cancer tissue using [TA365153] (DPH7 Antibody) at dilution 1/40 (Original magnification:  $\times 200$ )



Immunohistochemistry of paraffin-embedded Human lung cancer tissue using [TA365153] (DPH7 Antibody) at dilution 1/40, treated with fusion protein. (Original magnification:  $\times 200$ )



Immunohistochemistry of paraffin-embedded Human thyroid cancer tissue using [TA365153] (DPH7 Antibody) at dilution 1/40 (Original magnification:  $\times 200$ )



Immunohistochemistry of paraffin-embedded Human thyroid cancer tissue using [TA365153] (DPH7 Antibody) at dilution 1/40, treated with fusion protein. (Original magnification:  $\times 200$ )