

## Product datasheet for **TA365147**

### WDR45 Rabbit Polyclonal Antibody

#### Product data:

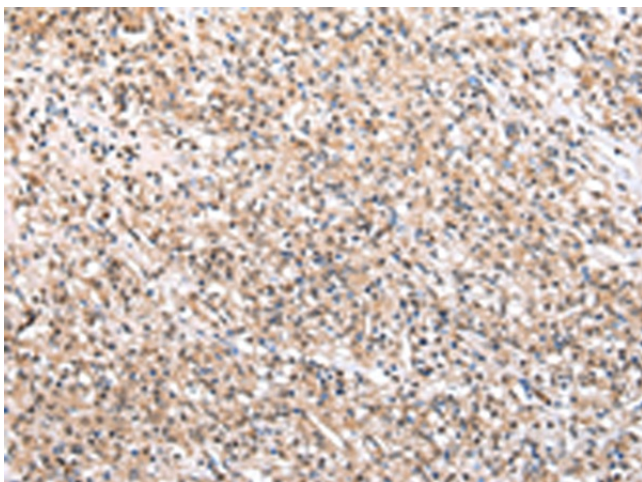
|                       |                                                                                            |
|-----------------------|--------------------------------------------------------------------------------------------|
| Product Type:         | Primary Antibodies                                                                         |
| Applications:         | IHC                                                                                        |
| Recommended Dilution: | IHC: 25-100<br>Positive control: Human prostate cancer<br>Predicted cell location: Nucleus |
| Reactivity:           | Human, Mouse                                                                               |
| Host:                 | Rabbit                                                                                     |
| Isotype:              | IgG                                                                                        |
| Clonality:            | Polyclonal                                                                                 |
| Immunogen:            | Fusion protein of human WDR45                                                              |
| Formulation:          | pH7.4 PBS, 0.05% NaN <sub>3</sub> , 40% Glycerol                                           |
| Concentration:        | lot specific                                                                               |
| Purification:         | Antigen affinity purification                                                              |
| Conjugation:          | Unconjugated                                                                               |
| Storage:              | Store at -20°C.                                                                            |
| Stability:            | 1 year                                                                                     |
| Gene Name:            | WD repeat domain 45                                                                        |
| Database Link:        | <a href="#">Entrez Gene 11152 Human Q9Y484</a>                                             |

**Background:** This gene encodes a member of the WD repeat protein family. WD repeats are minimally conserved regions of approximately 40 amino acids typically bracketed by gly-his and trp-aspartate (GH-WD), which may facilitate formation of heterotrimeric or multiprotein complexes. Members of this family are involved in a variety of cellular processes, including cell cycle progression, signal transduction, apoptosis, and gene regulation. This gene has a pseudogene at chromosome 4q31.3. Multiple alternatively spliced transcript variants encoding distinct isoforms have been found for this gene, but the biological validity and full-length nature of some variants have not been determined.

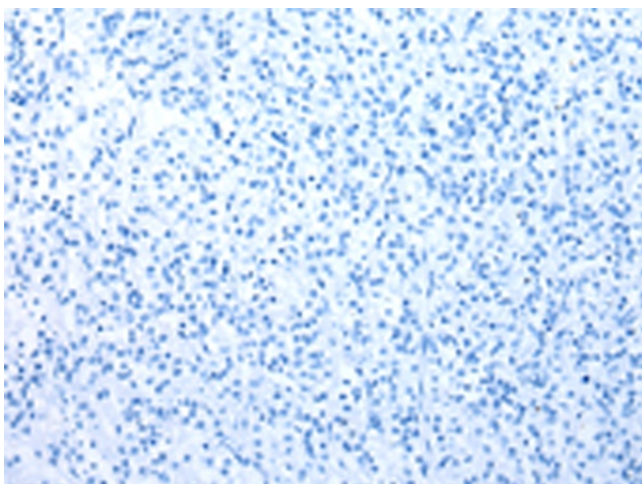
**Synonyms:** JM5; WDRX1; WDRX14; WIPI-4; WIPI4



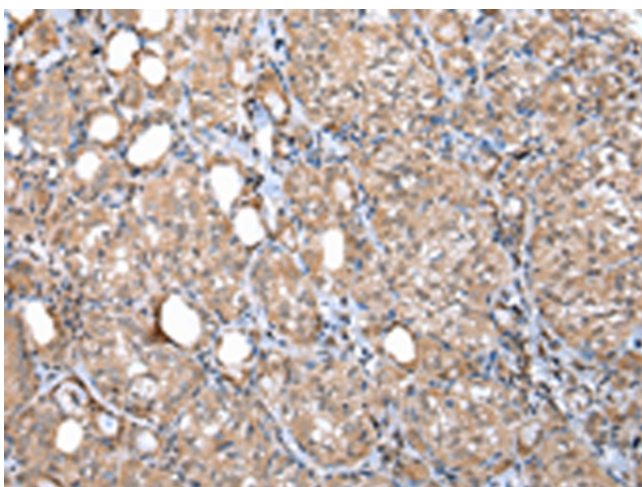
[View online »](#)

**Product images:**

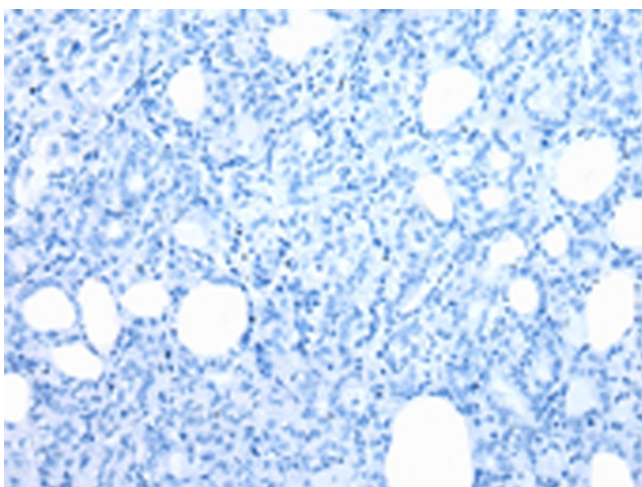
Immunohistochemistry of paraffin-embedded Human prostate cancer tissue using TA365147 (WDR45 Antibody) at dilution 1/35 (Original magnification: ×200)



Immunohistochemistry of paraffin-embedded Human prostate cancer tissue using TA365147 (WDR45 Antibody) at dilution 1/35, treated with fusion protein. (Original magnification: ×200)



Immunohistochemistry of paraffin-embedded Human thyroid cancer tissue using TA365147 (WDR45 Antibody) at dilution 1/35 (Original magnification:  $\times 200$ )



Immunohistochemistry of paraffin-embedded Human thyroid cancer tissue using TA365147 (WDR45 Antibody) at dilution 1/35, treated with fusion protein. (Original magnification:  $\times 200$ )