

## Product datasheet for **TA365144**

### VPS37A Rabbit Polyclonal Antibody

#### Product data:

Product Type:	Primary Antibodies
Applications:	IHC, WB
Recommended Dilution:	WB: 200-1000 WB positive control: Human fetal liver tissue and hela cell IHC: 25-100 Positive control: Human liver cancer Predicted cell location: Cytoplasm
Reactivity:	Human, Mouse
Host:	Rabbit
Isotype:	IgG
Clonality:	Polyclonal
Immunogen:	Fusion protein of human VPS37A
Formulation:	pH7.4 PBS, 0.05% NaN <sub>3</sub> , 40% Glycerol
Concentration:	lot specific
Purification:	Antigen affinity purification
Conjugation:	Unconjugated
Storage:	Store at -20°C.
Stability:	1 year
Predicted Protein Size:	44 kDa
Gene Name:	VPS37A, ESCRT-I subunit
Database Link:	<a href="#">Entrez Gene 137492 Human Q8NEZ2</a>



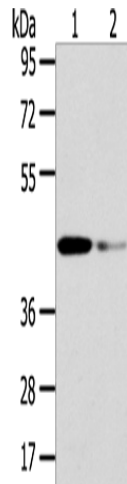
[View online »](#)

**Background:**

This gene belongs to the VPS37 family, and encodes a component of the ESCRT-I (endosomal sorting complex required for transport I) protein complex, required for the sorting of ubiquitinated transmembrane proteins into internal vesicles of multivesicular bodies. Expression of this gene is downregulated in hepatocellular carcinoma, and mutations in this gene are associated with autosomal recessive spastic paraplegia-53. A related pseudogene has been identified on chromosome 5. Alternatively spliced transcript variants have been found for this gene.

**Synonyms:**

FLJ32642; FLJ42616; HCRP1; hVps37A; PQBP2

**Product images:**

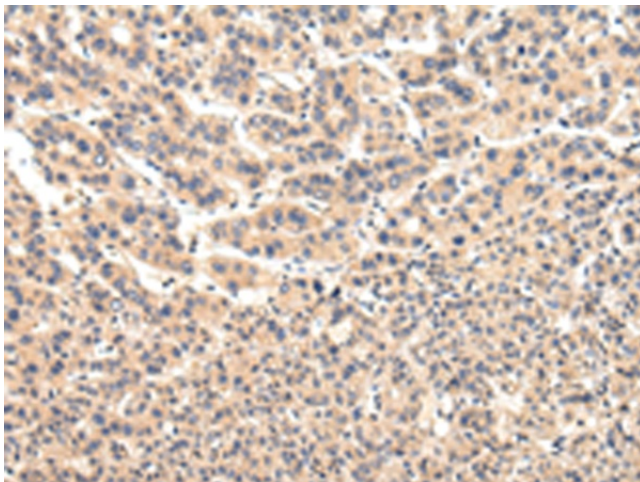
Gel: 8%SDS-PAGE

Lysate: 40 µg

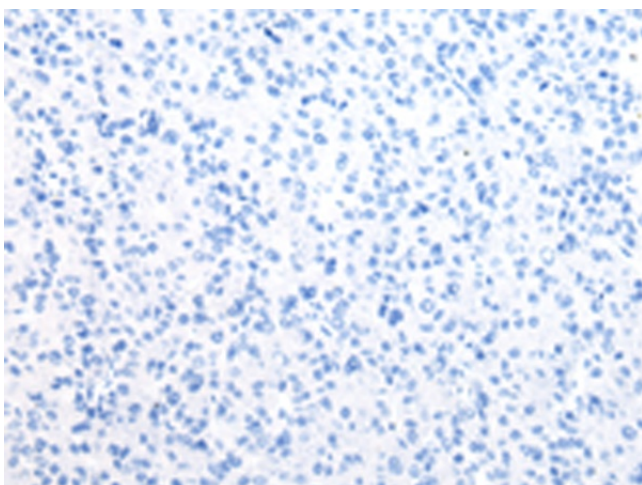
Lane 1-2: Human fetal liver tissue and HeLa cell  
Primary antibody: TA365144 (VPS37A Antibody)  
at dilution 1/200

Secondary antibody: Goat anti rabbit IgG at  
1/8000 dilution

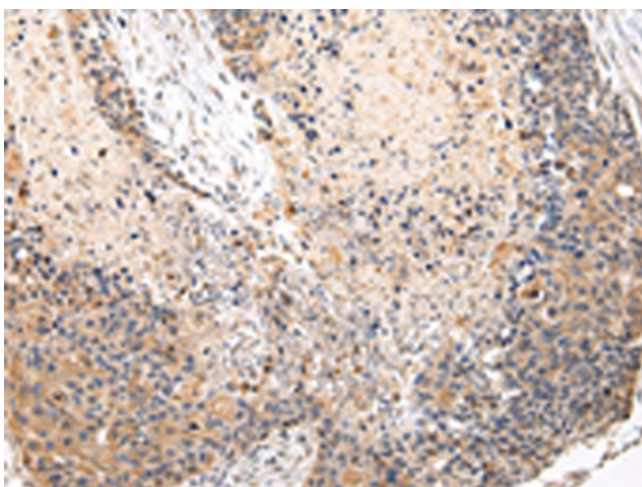
Exposure time: 15 seconds



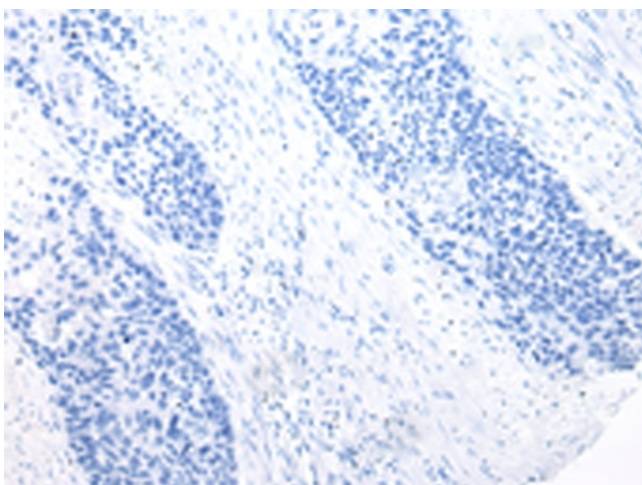
Immunohistochemistry of paraffin-embedded  
Human liver cancer tissue using TA365144  
(VPS37A Antibody) at dilution 1/20 (Original  
magnification: ×200)



Immunohistochemistry of paraffin-embedded Human liver cancer tissue using TA365144 (VPS37A Antibody) at dilution 1/20, treated with fusion protein. (Original magnification:  $\times 200$ )



Immunohistochemistry of paraffin-embedded Human esophagus cancer tissue using TA365144 (VPS37A Antibody) at dilution 1/20 (Original magnification:  $\times 200$ )



Immunohistochemistry of paraffin-embedded Human esophagus cancer tissue using TA365144 (VPS37A Antibody) at dilution 1/20, treated with fusion protein. (Original magnification:  $\times 200$ )