

Product datasheet for **TA365142S**

VPS33A Rabbit Polyclonal Antibody

Product data:

Product Type:	Primary Antibodies
Applications:	IHC
Recommended Dilution:	IHC: 25-100 Positive control: Human thyroid cancer Predicted cell location: Nucleus or Cytoplasm
Reactivity:	Human, Mouse, Rat
Host:	Rabbit
Isotype:	IgG
Clonality:	Polyclonal
Immunogen:	Fusion protein of human VPS33A
Formulation:	pH7.4 PBS, 0.05% NaN ₃ , 40% Glycerol
Purification:	Antigen affinity purification
Conjugation:	Unconjugated
Storage:	Store at -20°C.
Stability:	1 year
Gene Name:	VPS33A, CORVET/HOPS core subunit
Database Link:	Entrez Gene 65082 Human Q96AX1



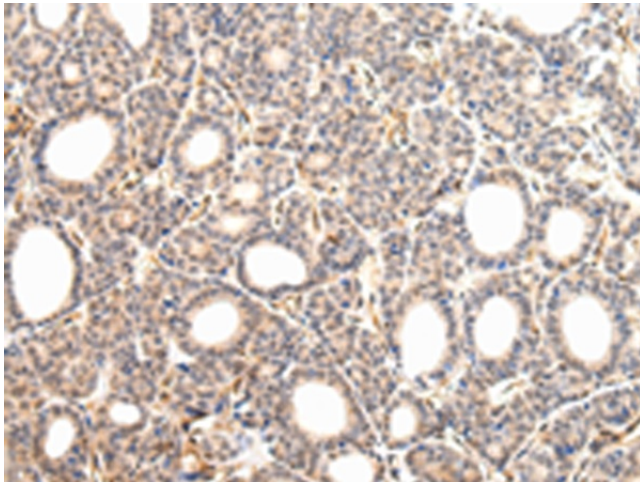
[View online »](#)

Background:

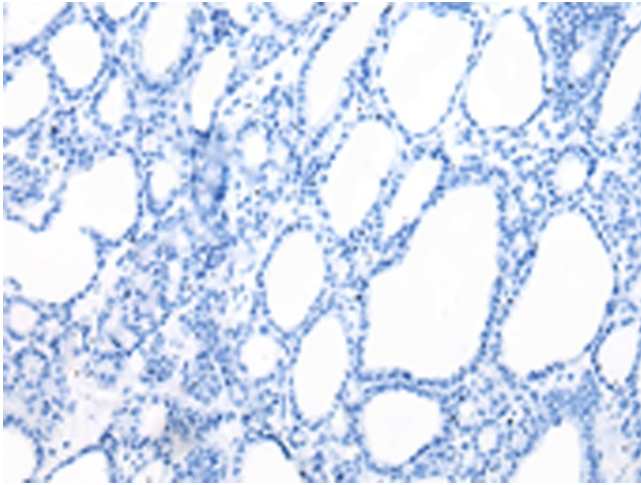
This gene encodes a tethering protein and a core subunit of the homotypic fusion and protein sorting (HOPS) complex. The HOPS complex and a second endosomal tethering complex called the class C core vacuole/endosome tethering (CORVET) complex, perform diverse functions in endocytosis including membrane tethering, RabGTPase interaction, activation and proofreading of synaptic-soluble N-ethylmaleimide-sensitive factor attachment receptor (SNARE) assembly to drive membrane fusion, and endosome-to-cytoskeleton attachment. The HOPS complex controls endosome maturation as well as endosome traffic to the lysosome. This complex is essential for vacuolar fusion and is required for adaptor protein complex 3-dependent transport from the golgi to the vacuole. The encoded protein belongs to the Sec1/Munc18 (SM) family of SNARE-mediated membrane fusion regulators. Naturally occurring mutations in this gene are associated with a novel mucopolysaccharidosis-like disease.

Synonyms:

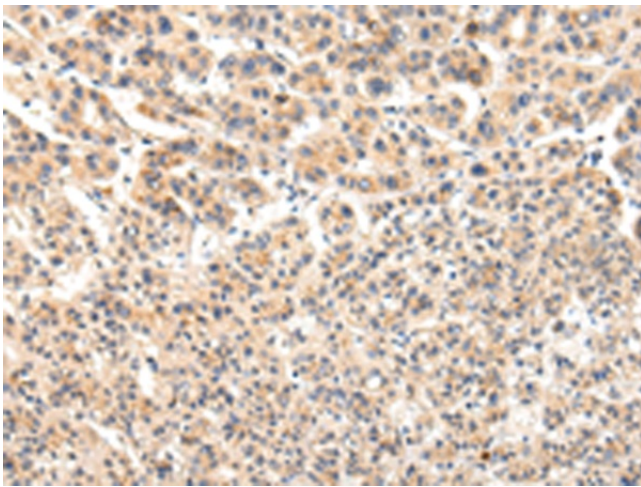
FLJ22395; FLJ23187; hVPS33A

Product images:

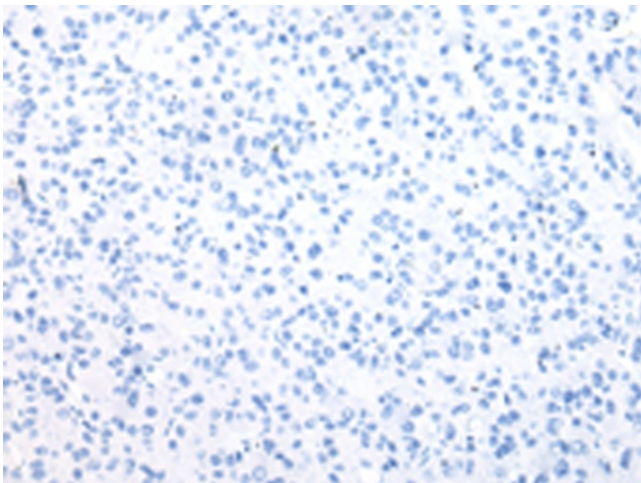
Immunohistochemistry of paraffin-embedded Human thyroid cancer tissue using [TA365142] (VPS33A Antibody) at dilution 1/30 (Original magnification: $\times 200$)



Immunohistochemistry of paraffin-embedded Human thyroid cancer tissue using [TA365142] (VPS33A Antibody) at dilution 1/30, treated with fusion protein. (Original magnification: $\times 200$)



Immunohistochemistry of paraffin-embedded Human liver cancer tissue using [TA365142] (VPS33A Antibody) at dilution 1/30 (Original magnification: $\times 200$)



Immunohistochemistry of paraffin-embedded Human liver cancer tissue using [TA365142] (VPS33A Antibody) at dilution 1/30, treated with fusion protein. (Original magnification: $\times 200$)