

## Product datasheet for **TA365130S**

### VASH1 Rabbit Polyclonal Antibody

#### Product data:

Product Type:	Primary Antibodies
Applications:	IHC, WB
Recommended Dilution:	WB: 200-1000 WB positive control: NIH/3T3 cell IHC: 25-100 Positive control: Human esophagus cancer Predicted cell location: Cytoplasm
Reactivity:	Human, Mouse
Host:	Rabbit
Isotype:	IgG
Clonality:	Polyclonal
Immunogen:	Full length fusion protein
Formulation:	pH7.4 PBS, 0.05% NaN <sub>3</sub> , 40% Glycerol
Purification:	Antigen affinity purification
Conjugation:	Unconjugated
Storage:	Store at -20°C.
Stability:	1 year
Predicted Protein Size:	41 kDa
Gene Name:	vasohibin 1
Database Link:	<a href="#">Entrez Gene 22846 Human Q7L8A9</a>

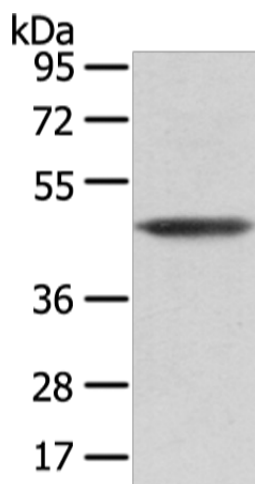
**Background:** Vasohibin-1 is a protein that in humans is encoded by the VASH1 gene. Angiogenesis inhibitor. Inhibits migration, proliferation and network formation by endothelial cells as well as angiogenesis. This inhibitory effect is selective to endothelial cells as it does not affect the migration of smooth muscle cells or fibroblasts. Does not affect the proliferation of cancer cells in vitro, but inhibits tumor growth and tumor angiogenesis. Acts in an autocrine manner. Inhibits artery neointimal formation and macrophage infiltration.

**Synonyms:** KIAA1036; VASH

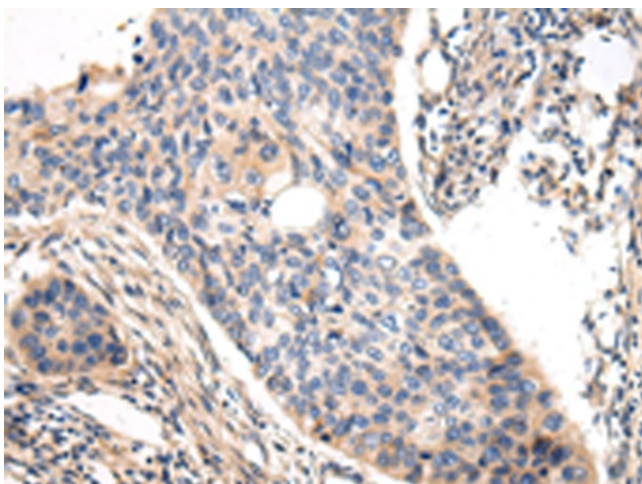


[View online »](#)

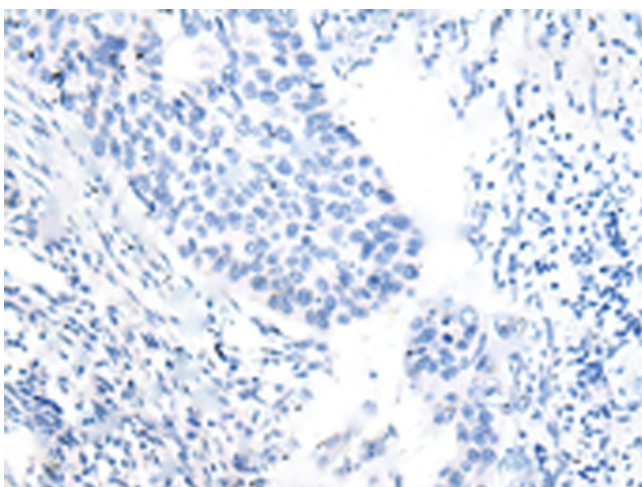
## Product images:



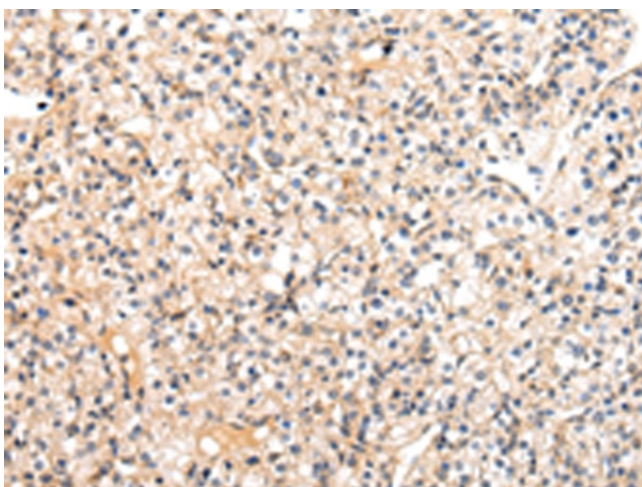
Gel: 8%SDS-PAGE  
Lysate: 40  $\mu$ g  
Lane: NIH/3T3 cell  
Primary antibody: [TA365130] (VASH1 Antibody) at dilution 1/200  
Secondary antibody: Goat anti rabbit IgG at 1/8000 dilution  
Exposure time: 10 seconds



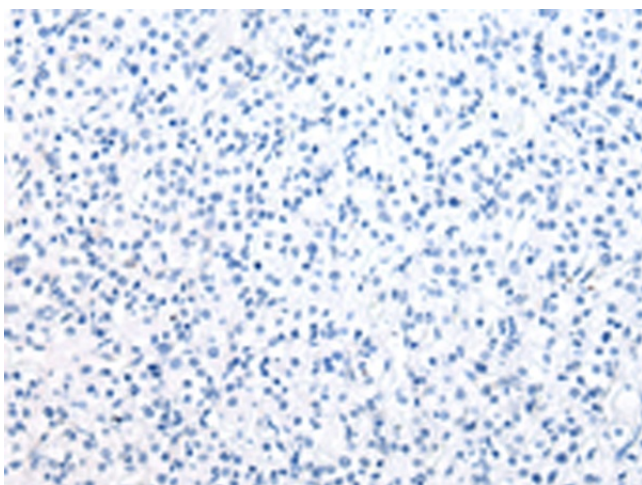
Immunohistochemistry of paraffin-embedded Human esophagus cancer tissue using [TA365130] (VASH1 Antibody) at dilution 1/20 (Original magnification:  $\times$ 200)



Immunohistochemistry of paraffin-embedded Human esophagus cancer tissue using [TA365130] (VASH1 Antibody) at dilution 1/20, treated with fusion protein. (Original magnification: ×200)



Immunohistochemistry of paraffin-embedded Human prostate cancer tissue using [TA365130] (VASH1 Antibody) at dilution 1/20 (Original magnification: ×200)



Immunohistochemistry of paraffin-embedded Human prostate cancer tissue using [TA365130] (VASH1 Antibody) at dilution 1/20, treated with fusion protein. (Original magnification: ×200)