

## Product datasheet for **TA365129**

### VAPA Rabbit Polyclonal Antibody

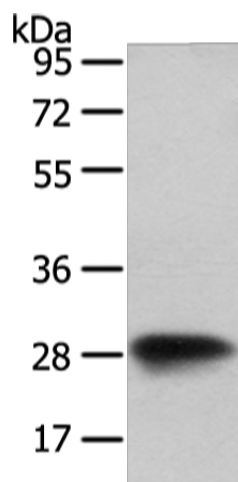
#### Product data:

Product Type:	Primary Antibodies
Applications:	IHC, WB
Recommended Dilution:	WB: 200-1000 WB positive control: NIH/3T3 cell IHC: 25-100 Positive control: Human liver cancer Predicted cell location: Cytoplasm
Reactivity:	Human, Mouse, Rat
Host:	Rabbit
Isotype:	IgG
Clonality:	Polyclonal
Immunogen:	Full length fusion protein
Formulation:	pH7.4 PBS, 0.05% NaN <sub>3</sub> , 40% Glycerol
Concentration:	lot specific
Purification:	Antigen affinity purification
Conjugation:	Unconjugated
Storage:	Store at -20°C.
Stability:	1 year
Predicted Protein Size:	28 kDa
Gene Name:	VAMP associated protein A
Database Link:	<a href="#">Entrez Gene 9218 Human Q9P0L0</a>
Background:	The protein encoded by this gene is a type IV membrane protein. It is present in the plasma membrane and intracellular vesicles. It may also be associated with the cytoskeleton. This protein may function in vesicle trafficking, membrane fusion, protein complex assembly and cell motility. Alternative splicing occurs at this locus and two transcript variants encoding distinct isoforms have been identified.
Synonyms:	hVAP-33; MGC3745; VAMP-A; VAP-33; VAP-A; VAP33

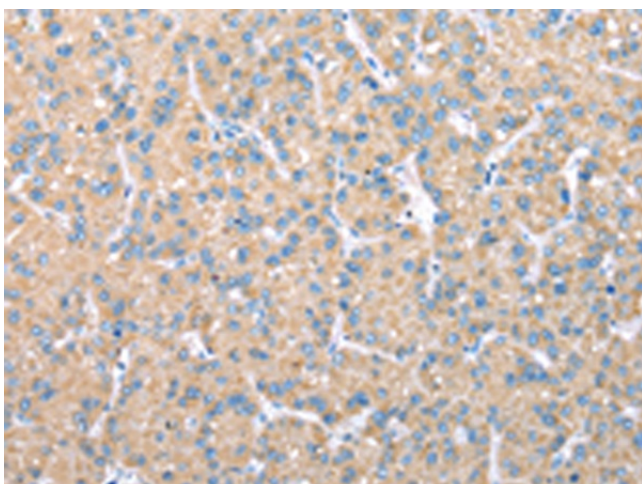


[View online »](#)

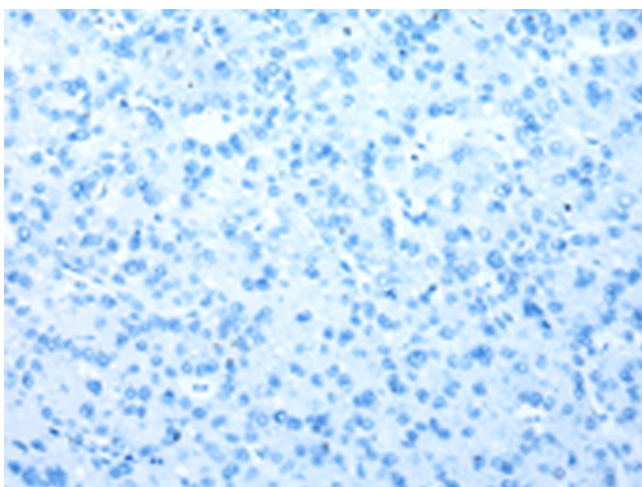
## Product images:



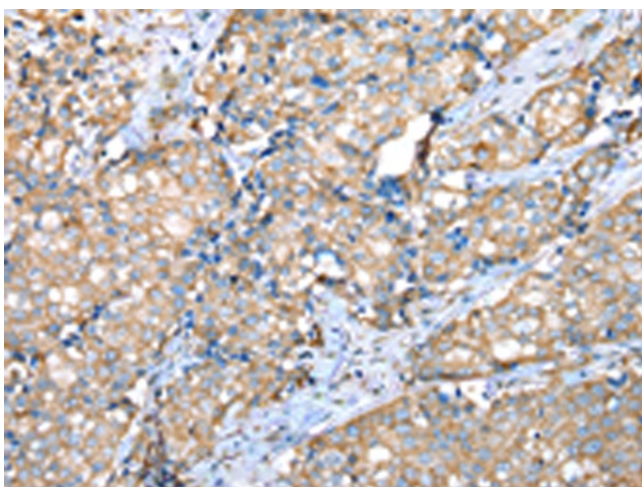
Gel: 8%SDS-PAGE  
Lysate: 40  $\mu$ g  
Lane: NIH/3T3 cell  
Primary antibody: TA365129 (VAPA Antibody) at dilution 1/400  
Secondary antibody: Goat anti rabbit IgG at 1/8000 dilution  
Exposure time: 1 second



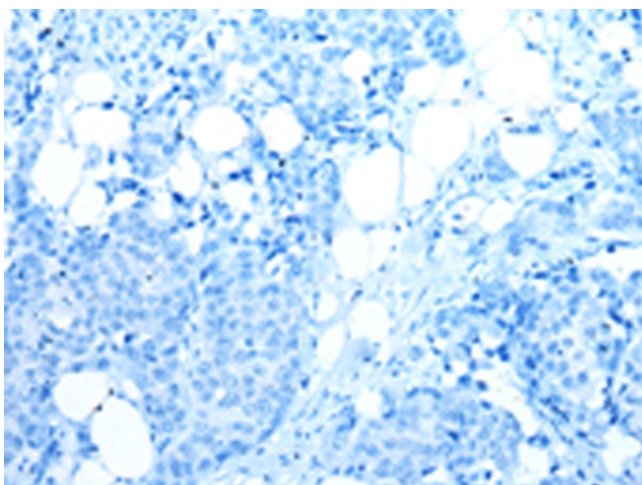
Immunohistochemistry of paraffin-embedded Human liver cancer tissue using TA365129 (VAPA Antibody) at dilution 1/30 (Original magnification:  $\times$ 200)



Immunohistochemistry of paraffin-embedded Human liver cancer tissue using TA365129 (VAPA Antibody) at dilution 1/30, treated with fusion protein. (Original magnification: x200)



Immunohistochemistry of paraffin-embedded Human breast cancer tissue using TA365129 (VAPA Antibody) at dilution 1/30 (Original magnification: x200)



Immunohistochemistry of paraffin-embedded Human breast cancer tissue using TA365129 (VAPA Antibody) at dilution 1/30, treated with fusion protein. (Original magnification: x200)