

## Product datasheet for **TA365125**

### UQCRC2 Rabbit Polyclonal Antibody

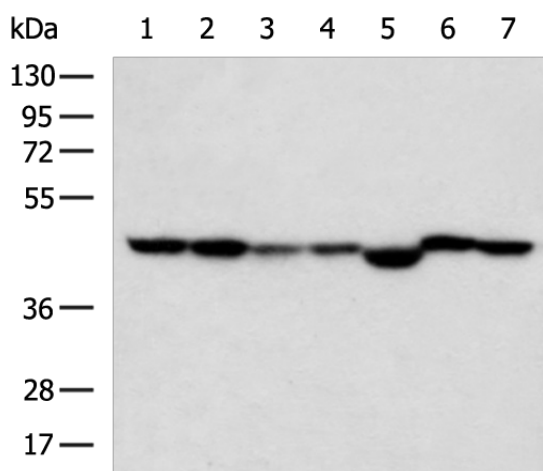
#### Product data:

Product Type:	Primary Antibodies
Applications:	IHC, WB
Recommended Dilution:	WB: 500-2000 WB positive control: HepG2, 293T, Jurkat, Raji cell, Mouse heart tissue, HT-29 cell, Mouse kidney tissue lysates IHC: 50-200 Positive control: Human cervical cancer Predicted cell location: Cytoplasm and Cell membrane
Reactivity:	Human, Mouse, Rat
Host:	Rabbit
Isotype:	IgG
Clonality:	Polyclonal
Immunogen:	Fusion protein of human UQCRC2
Formulation:	pH7.4 PBS, 0.05% NaN <sub>3</sub> , 40% Glycerol
Concentration:	lot specific
Purification:	Antigen affinity purification
Conjugation:	Unconjugated
Storage:	Store at -20°C.
Stability:	1 year
Predicted Protein Size:	48 kDa
Gene Name:	ubiquinol-cytochrome c reductase core protein II
Database Link:	<a href="#">Entrez Gene 7385 Human P22695</a>
Background:	The protein encoded by this gene is located in the mitochondrion, where it is part of the ubiquinol-cytochrome c reductase complex (also known as complex III). This complex constitutes a part of the mitochondrial respiratory chain. Defects in this gene are a cause of mitochondrial complex III deficiency nuclear type 5.
Synonyms:	QCR2; UQCR2

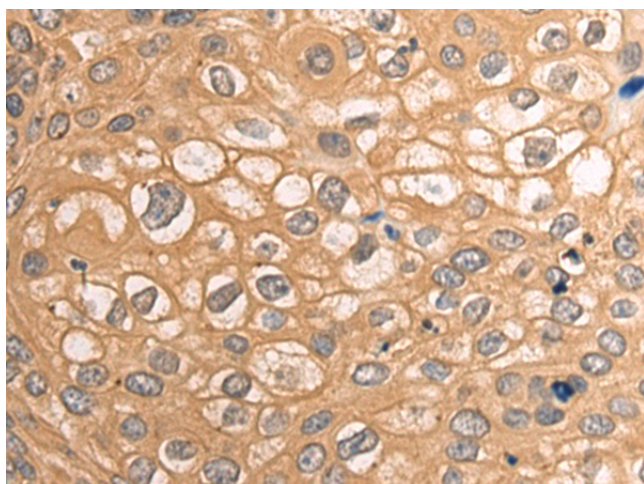


[View online »](#)

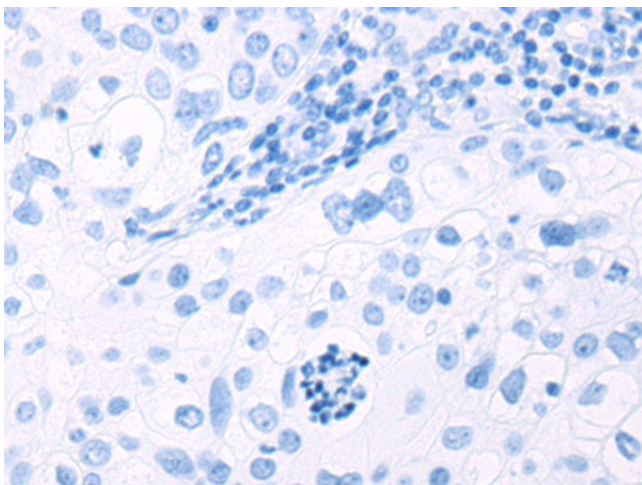
## Product images:



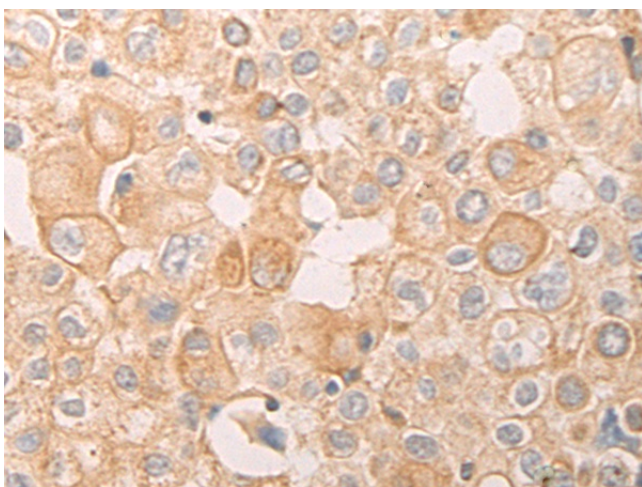
Gel: 8%SDS-PAGE  
Lysate: 40  $\mu$ g  
Lane 1-7: HepG2  
293T  
Jurkat  
Raji cell  
Mouse heart tissue  
HT-29 cell  
Mouse kidney tissue lysates  
Primary antibody: TA365125 (UQCRC2 Antibody)  
at dilution 1/800  
Secondary antibody: Goat anti rabbit IgG at  
1/5000 dilution  
Exposure time: 3 seconds



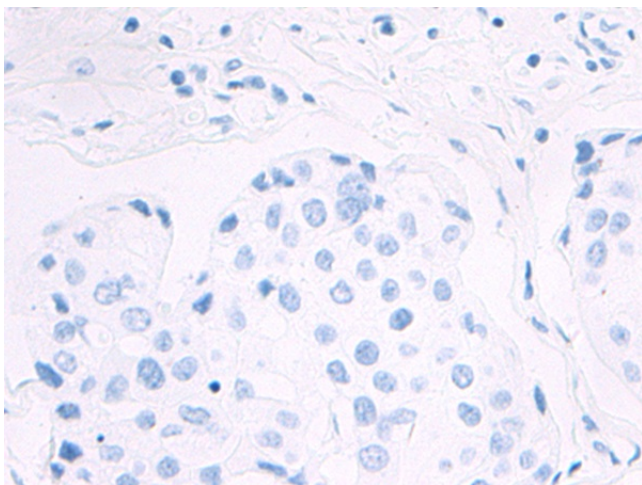
Immunohistochemistry of paraffin-embedded  
Human cervical cancer tissue using TA365125  
(UQCRC2 Antibody) at dilution 1/70 (Original  
magnification:  $\times 200$ )



Immunohistochemistry of paraffin-embedded Human cervical cancer tissue using TA365125 (UQCRC2 Antibody) at dilution 1/70, treated with fusion protein. (Original magnification: ×200)



Immunohistochemistry of paraffin-embedded Human breast cancer tissue using TA365125 (UQCRC2 Antibody) at dilution 1/70 (Original magnification: ×200)



Immunohistochemistry of paraffin-embedded Human breast cancer tissue using TA365125 (UQCRC2 Antibody) at dilution 1/70, treated with fusion protein. (Original magnification: ×200)