

## Product datasheet for **TA365122**

### Integrin alpha 5 (ITGA5) Rabbit Polyclonal Antibody

#### Product data:

Product Type:	Primary Antibodies
Applications:	IHC, WB
Recommended Dilution:	WB: 500-2000 WB positive control: HUVEC, NIH/3T3 cell lysates IHC: 50-200 Positive control: Human liver cancer Predicted cell location: Cytoplasm and Cell membrane
Reactivity:	Human, Mouse
Host:	Rabbit
Isotype:	IgG
Clonality:	Polyclonal
Immunogen:	Fusion protein of human ITGA5
Formulation:	pH7.4 PBS, 0.05% NaN <sub>3</sub> , 40% Glycerol
Concentration:	lot specific
Purification:	Antigen affinity purification
Conjugation:	Unconjugated
Storage:	Store at -20°C.
Stability:	1 year
Predicted Protein Size:	115 kDa
Gene Name:	integrin subunit alpha 5
Database Link:	<a href="#">Entrez Gene 3678 Human P08648</a>



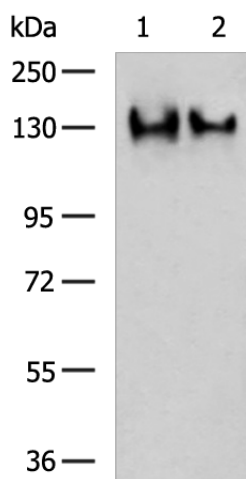
[View online »](#)

**Background:**

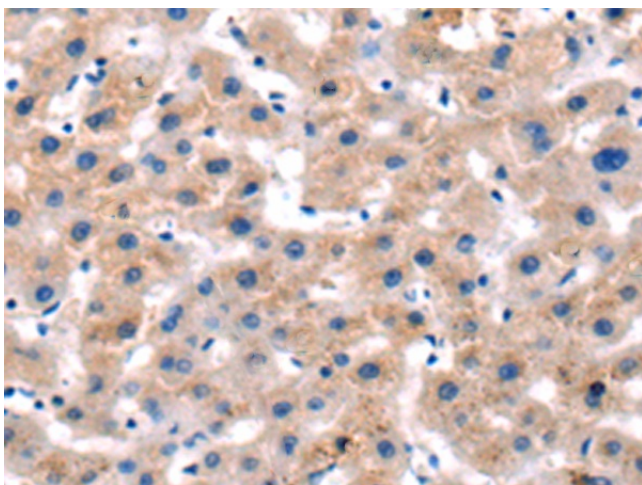
The product of this gene belongs to the integrin alpha chain family. Integrins are heterodimeric integral membrane proteins composed of an alpha subunit and a beta subunit that function in cell surface adhesion and signaling. The encoded preproprotein is proteolytically processed to generate light and heavy chains that comprise the alpha 5 subunit. This subunit associates with the beta 1 subunit to form a fibronectin receptor. This integrin may promote tumor invasion, and higher expression of this gene may be correlated with shorter survival time in lung cancer patients. Note that the integrin alpha 5 and integrin alpha V subunits are encoded by distinct genes.

**Synonyms:**

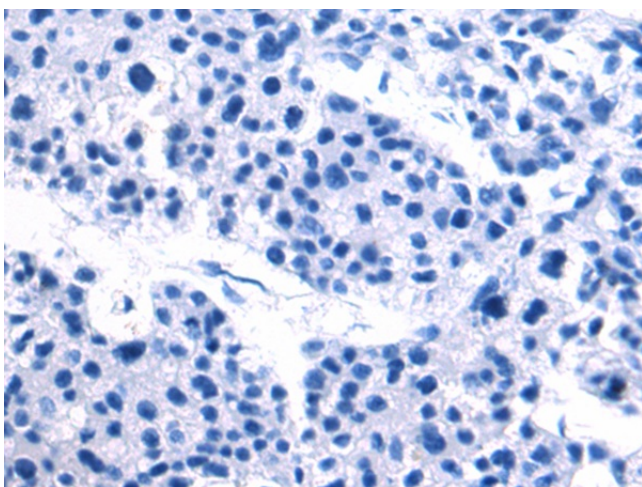
CD49e; FNRA; VLA-5; VLA5A

**Product images:**


Gel: 6%SDS-PAGE  
 Lysate: 40 µg  
 Lane 1-2: HUVEC  
 NIH/3T3 cell lysates  
 Primary antibody: TA365122 (ITGA5 Antibody) at dilution 1/400  
 Secondary antibody: Goat anti rabbit IgG at 1/5000 dilution  
 Exposure time: 20 seconds



Immunohistochemistry of paraffin-embedded Human liver cancer tissue using TA365122 (ITGA5 Antibody) at dilution 1/60 (Original magnification: ×200)



Immunohistochemistry of paraffin-embedded Human liver cancer tissue using TA365122 (ITGA5 Antibody) at dilution 1/60, treated with fusion protein. (Original magnification: ×200)