

## Product datasheet for **TA365112**

### UBAP2L Rabbit Polyclonal Antibody

#### Product data:

Product Type:	Primary Antibodies
Applications:	IHC
Recommended Dilution:	IHC: 25-100 Positive control: Human liver cancer Predicted cell location: Cytoplasm
Reactivity:	Human, Mouse
Host:	Rabbit
Isotype:	IgG
Clonality:	Polyclonal
Immunogen:	Fusion protein of human UBAP2L
Formulation:	pH7.4 PBS, 0.05% NaN <sub>3</sub> , 40% Glycerol
Concentration:	lot specific
Purification:	Antigen affinity purification
Conjugation:	Unconjugated
Storage:	Store at -20°C.
Stability:	1 year
Gene Name:	ubiquitin associated protein 2 like
Database Link:	<a href="#">Entrez Gene 9898 Human Q14157</a>



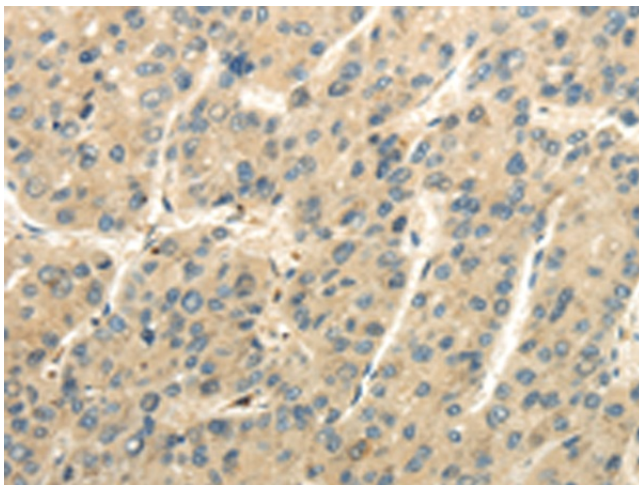
[View online »](#)

**Background:**

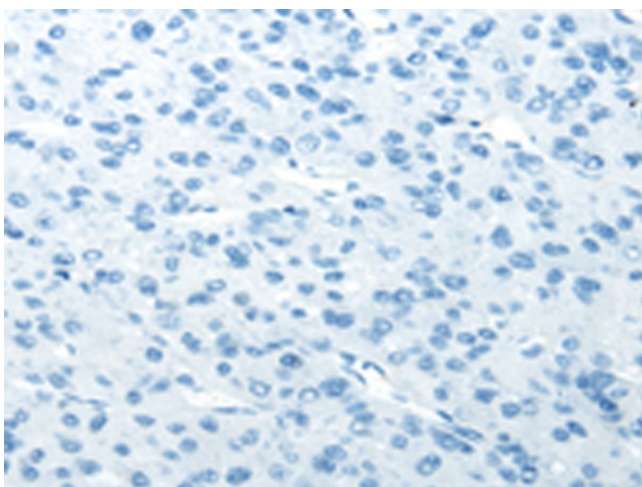
UBAP2L, also known as NICE4, is a protein that is ubiquitously expressed. Phosphorylated upon DNA damage, NICE4 contains one UBA domain and is expressed as 4 isoforms produced by alternative splicing events. The gene that encodes NICE4 maps to human chromosome 1. Chromosome 1 is the largest human chromosome spanning about 260 million base pairs and making up 8% of the human genome. There are about 3,000 genes on chromosome 1, and considering the great number of genes there are also a large number of diseases associated with chromosome 1. Notably, the rare aging disease Hutchinson-Gilford progeria is associated with the LMNA gene which encodes lamin A. When defective, the LMNA gene product can build up in the nucleus and cause characteristic nuclear blebs. The mechanism of rapidly enhanced aging is unclear and is a topic of continuing exploration. The MUTYH gene is located on chromosome 1 and is partially responsible for familial adenomatous polyposis. Stickler syndrome, Parkinsons, Gaucher disease and Usher syndrome are also associated with chromosome 1.

**Synonyms:**

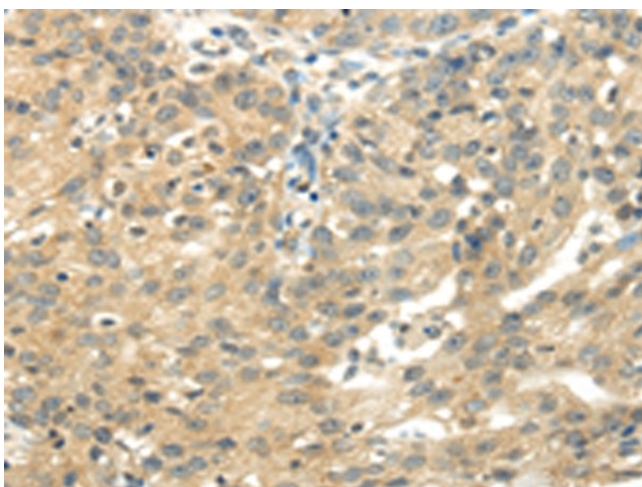
FLJ42300; KIAA0144; NICE-4; NICE4; OTTHUMP00000034204

**Product images:**

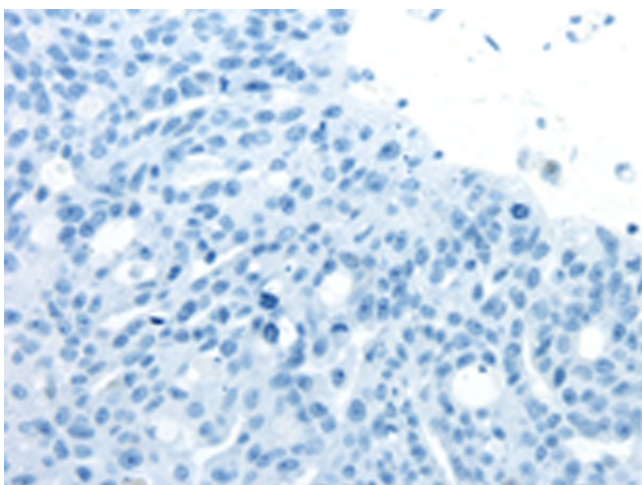
Immunohistochemistry of paraffin-embedded Human liver cancer tissue using TA365112 (UBAP2L Antibody) at dilution 1/25 (Original magnification: ×200)



Immunohistochemistry of paraffin-embedded Human liver cancer tissue using TA365112 (UBAP2L Antibody) at dilution 1/25, treated with fusion protein. (Original magnification: ×200)



Immunohistochemistry of paraffin-embedded Human breast cancer tissue using TA365112 (UBAP2L Antibody) at dilution 1/25 (Original magnification: ×200)



Immunohistochemistry of paraffin-embedded Human breast cancer tissue using TA365112 (UBAP2L Antibody) at dilution 1/25, treated with fusion protein. (Original magnification: ×200)