

## Product datasheet for **TA365110S**

### DNAJB11 Rabbit Polyclonal Antibody

#### Product data:

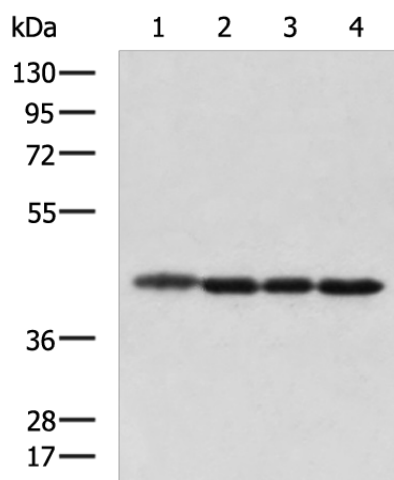
Product Type:	Primary Antibodies
Applications:	IHC, WB
Recommended Dilution:	WB: 1000-5000 WB positive control: Hela, HT-29, K562 and NIH/3T3 cell lysates IHC: 200-400 Positive control: Human ovarian cancer Predicted cell location: Cytoplasm
Reactivity:	Human, Mouse, Rat
Host:	Rabbit
Isotype:	IgG
Clonality:	Polyclonal
Immunogen:	Fusion protein of human DNAJB11
Formulation:	pH7.4 PBS, 0.05% NaN <sub>3</sub> , 40% Glycerol
Purification:	Antigen affinity purification
Conjugation:	Unconjugated
Storage:	Store at -20°C.
Stability:	1 year
Predicted Protein Size:	40 kDa
Gene Name:	DnaJ heat shock protein family (Hsp40) member B11
Database Link:	<a href="#">Entrez Gene 51726 Human Q9UBS4</a>
Background:	This gene encodes a soluble glycoprotein of the endoplasmic reticulum (ER) lumen that functions as a co-chaperone of binding immunoglobulin protein, a 70 kilodalton heat shock protein chaperone required for the proper folding and assembly of proteins in the ER. The encoded protein contains a highly conserved J domain of about 70 amino acids with a characteristic His-Pro-Asp (HPD) motif and may regulate the activity of binding immunoglobulin protein by stimulating ATPase activity.



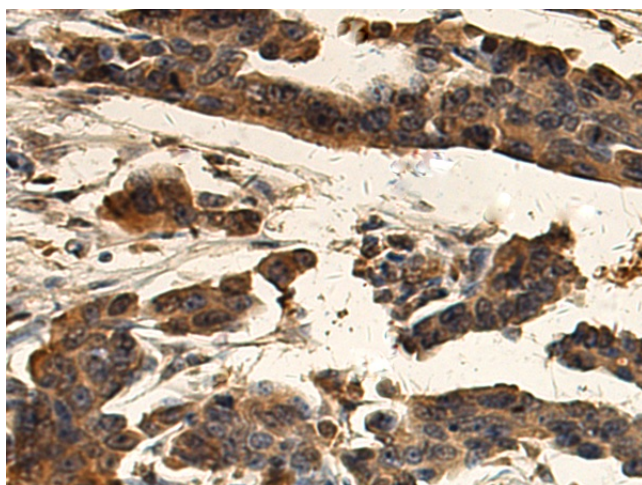
[View online »](#)

**Synonyms:** ABBP-2; ABBP2; DJ9; EDJ; ERdj3; ERj3; ERj3p; hDj9; HEDJ; OTTHUMP00000210171; PRO1080; UNQ537

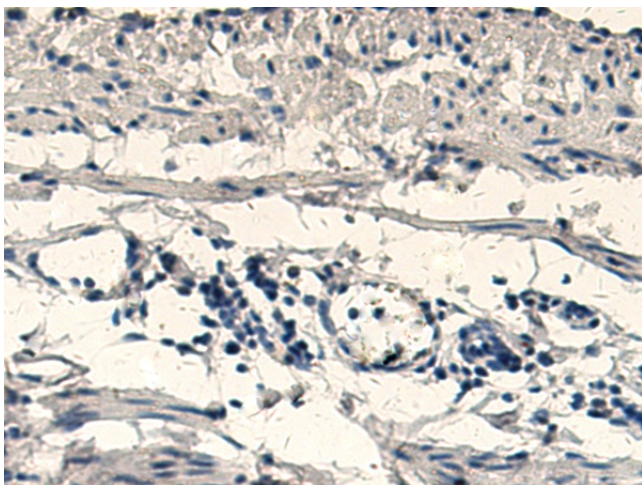
**Product images:**



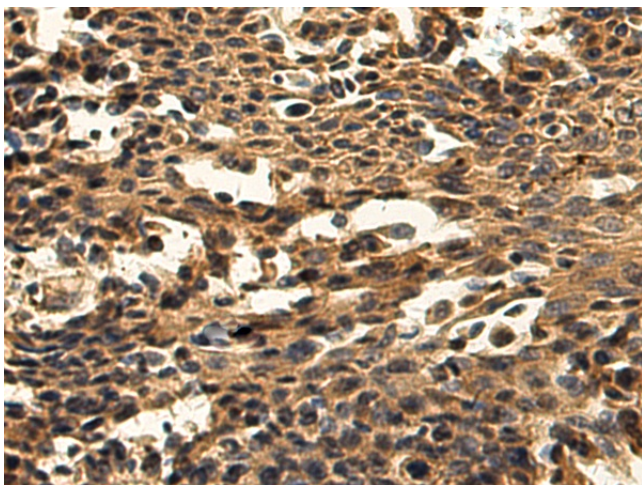
Gel: 8%SDS-PAGE  
 Lysate: 40 µg  
 Lane 1-4: HeLa  
 HT-29  
 K562 and NIH/3T3 cell lysates  
 Primary antibody: [TA365110] (DNAJB11  
 Antibody) at dilution 1/1000  
 Secondary antibody: Goat anti rabbit IgG at  
 1/5000 dilution  
 Exposure time: 15 seconds



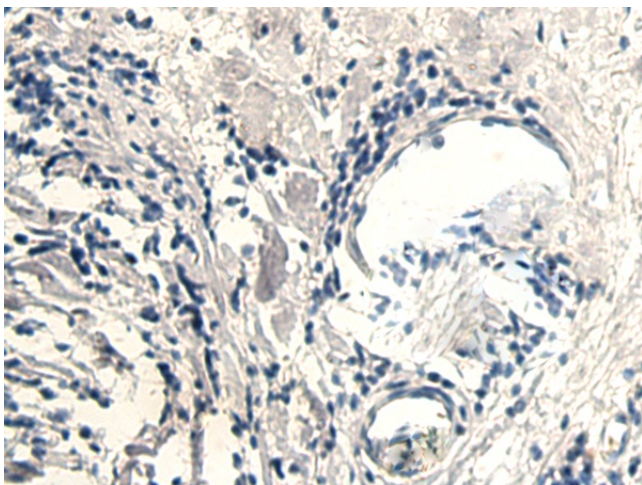
Immunohistochemistry of paraffin-embedded  
 Human ovarian cancer tissue using [TA365110]  
 (DNAJB11 Antibody) at dilution 1/220 (Original  
 magnification: ×200)



Immunohistochemistry of paraffin-embedded Human ovarian cancer tissue using [TA365110] (DNAJB11 Antibody) at dilution 1/220, treated with fusion protein. (Original magnification:  $\times 200$ )



Immunohistochemistry of paraffin-embedded Human lung cancer tissue using [TA365110] (DNAJB11 Antibody) at dilution 1/220 (Original magnification:  $\times 200$ )



Immunohistochemistry of paraffin-embedded Human lung cancer tissue using [TA365110] (DNAJB11 Antibody) at dilution 1/220, treated with fusion protein. (Original magnification:  $\times 200$ )