

## Product datasheet for **TA365109**

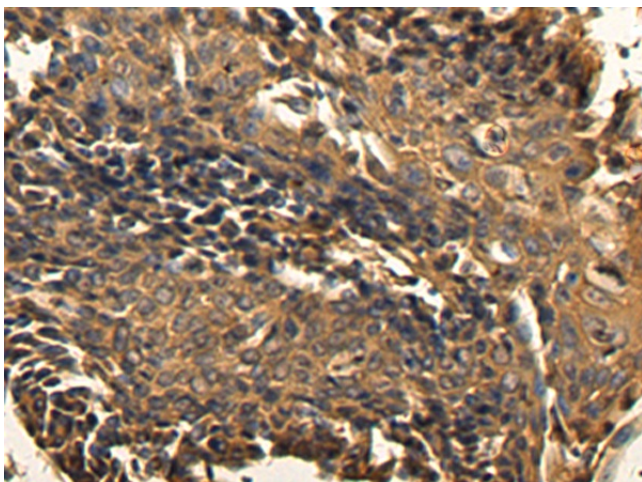
### TUSC2 Rabbit Polyclonal Antibody

#### Product data:

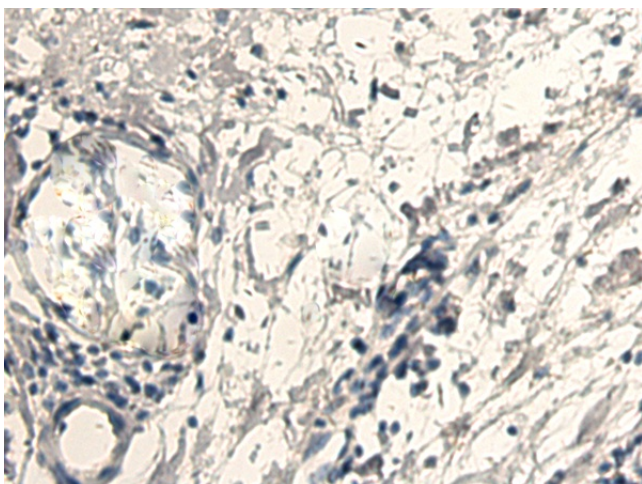
Product Type:	Primary Antibodies
Applications:	IHC
Recommended Dilution:	IHC: 200-400 Positive control: Human lung cancer Predicted cell location: Cytoplasm
Reactivity:	Human, Mouse
Host:	Rabbit
Isotype:	IgG
Clonality:	Polyclonal
Immunogen:	Fusion protein of human TUSC2
Formulation:	pH7.4 PBS, 0.05% NaN <sub>3</sub> , 40% Glycerol
Concentration:	lot specific
Purification:	Antigen affinity purification
Conjugation:	Unconjugated
Storage:	Store at -20°C.
Stability:	1 year
Gene Name:	tumor suppressor candidate 2
Database Link:	<a href="#">Entrez Gene 11334 Human O75896</a>
Background:	This gene is a highly conserved lung cancer candidate gene. No other information about this gene is currently available.
Synonyms:	C3orf11; FUS1; LGCC; PAP; PDAP2



[View online »](#)

**Product images:**

Immunohistochemistry of paraffin-embedded Human lung cancer tissue using TA365109 (TUSC2 Antibody) at dilution 1/220 (Original magnification:  $\times 200$ )



Immunohistochemistry of paraffin-embedded Human lung cancer tissue using TA365109 (TUSC2 Antibody) at dilution 1/220, treated with fusion protein. (Original magnification:  $\times 200$ )