

Product datasheet for **TA365107**

TUBA6 (TUBA1C) Rabbit Polyclonal Antibody

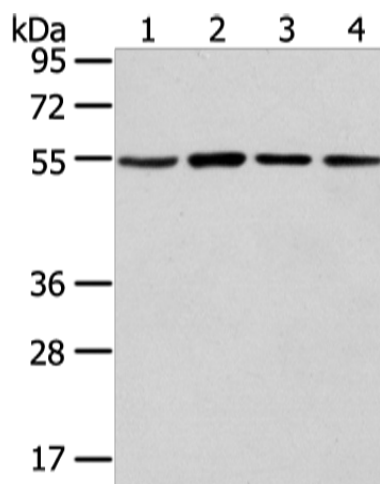
Product data:

Product Type:	Primary Antibodies
Applications:	IHC, WB
Recommended Dilution:	WB: 500-2000 WB positive control: NIH/3T3, K562, A431 and hela cell IHC: 25-100 Positive control: Human prostate cancer Predicted cell location: Cytoplasm and Cell membrane
Reactivity:	Human, Mouse, Rat
Host:	Rabbit
Isotype:	IgG
Clonality:	Polyclonal
Immunogen:	Fusion protein of human TUBA1C
Formulation:	pH7.4 PBS, 0.05% NaN ₃ , 40% Glycerol
Concentration:	lot specific
Purification:	Antigen affinity purification
Conjugation:	Unconjugated
Storage:	Store at -20°C.
Stability:	1 year
Predicted Protein Size:	50 kDa
Gene Name:	tubulin alpha 1c
Database Link:	Entrez Gene 84790 Human Q9BQE3
Background:	Tubulin is the major constituent of microtubules. It binds two moles of GTP, one at an exchangeable site on the beta chain and one at a non-exchangeable site on the alpha chain.
Synonyms:	bcm948; MGC10851; MGC14580; TUBA6

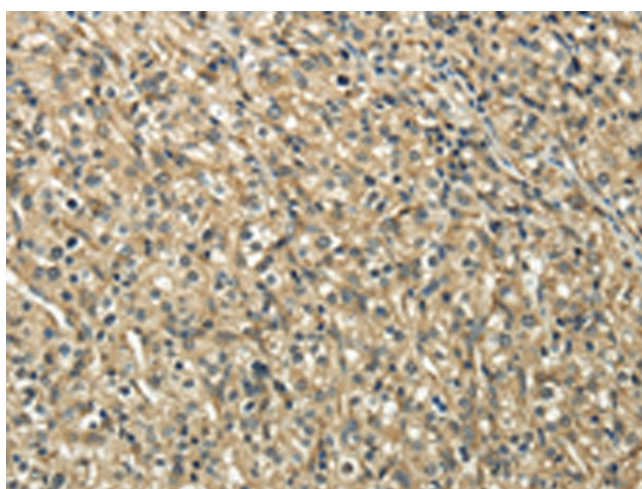


[View online »](#)

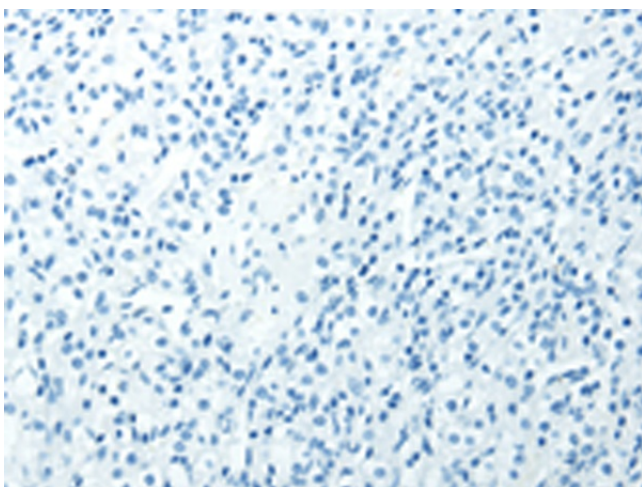
Product images:



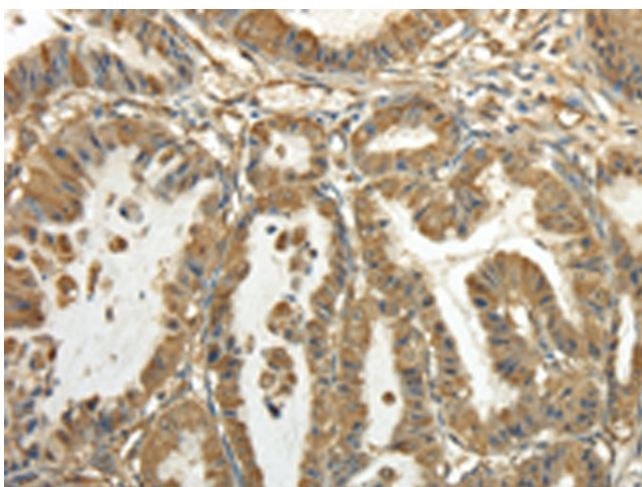
Gel: 8%SDS-PAGE
Lysate: 40 μ g
Lane 1-4: NIH/3T3
K562
A431 and hela cell
Primary antibody: TA365107 (TUBA1C Antibody)
at dilution 1/300
Secondary antibody: Goat anti rabbit IgG at
1/8000 dilution
Exposure time: 10 seconds



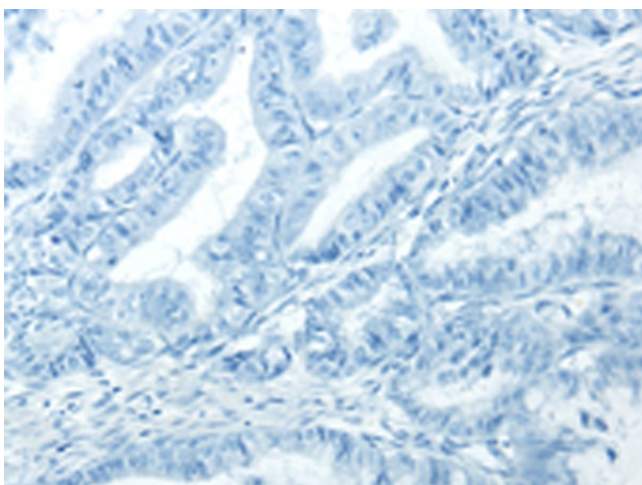
Immunohistochemistry of paraffin-embedded
Human prostate cancer tissue using TA365107
(TUBA1C Antibody) at dilution 1/20 (Original
magnification: \times 200)



Immunohistochemistry of paraffin-embedded Human prostate cancer tissue using TA365107 (TUBA1C Antibody) at dilution 1/20, treated with fusion protein. (Original magnification: ×200)



Immunohistochemistry of paraffin-embedded Human esophagus cancer tissue using TA365107 (TUBA1C Antibody) at dilution 1/20 (Original magnification: ×200)



Immunohistochemistry of paraffin-embedded Human esophagus cancer tissue using TA365107 (TUBA1C Antibody) at dilution 1/20, treated with fusion protein. (Original magnification: ×200)