

## Product datasheet for **TA365104S**

### Inosine triphosphate pyrophosphatase (ITPA) Rabbit Polyclonal Antibody

#### Product data:

Product Type:	Primary Antibodies
Applications:	IHC, WB
Recommended Dilution:	WB: 200-1000 WB positive control: Hela cells and Human fetal liver tissue IHC: 25-100 Positive control: Human liver cancer Predicted cell location: Cytoplasm
Reactivity:	Human, Mouse, Rat
Host:	Rabbit
Isotype:	IgG
Clonality:	Polyclonal
Immunogen:	Full length fusion protein
Formulation:	pH7.4 PBS, 0.05% NaN <sub>3</sub> , 40% Glycerol
Purification:	Antigen affinity purification
Conjugation:	Unconjugated
Storage:	Store at -20°C.
Stability:	1 year
Predicted Protein Size:	21 kDa
Gene Name:	inosine triphosphatase
Database Link:	<a href="#">Entrez Gene 3704 Human Q9BY32</a>

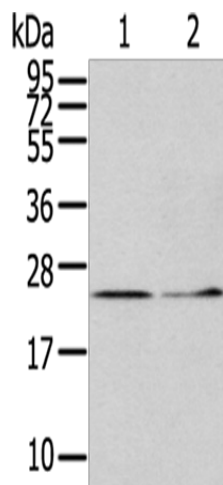
**Background:** This gene encodes an inosine triphosphate pyrophosphohydrolase. The encoded protein hydrolyzes inosine triphosphate and deoxyinosine triphosphate to the monophosphate nucleotide and diphosphate. This protein, which is a member of the HAM1 NTPase protein family, is found in the cytoplasm and acts as a homodimer. Defects in the encoded protein can result in inosine triphosphate pyrophosphorylase deficiency which causes an accumulation of ITP in red blood cells. Alternate splicing results in multiple transcript variants.



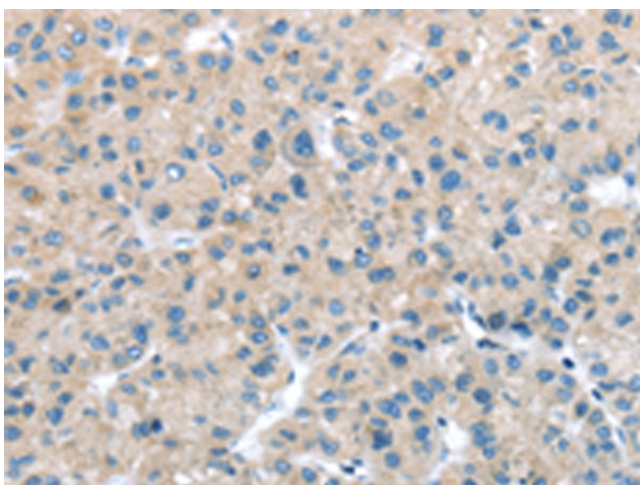
[View online »](#)

Synonyms: C20orf37; dj794l6.3; HLC14-06-P; ITPase

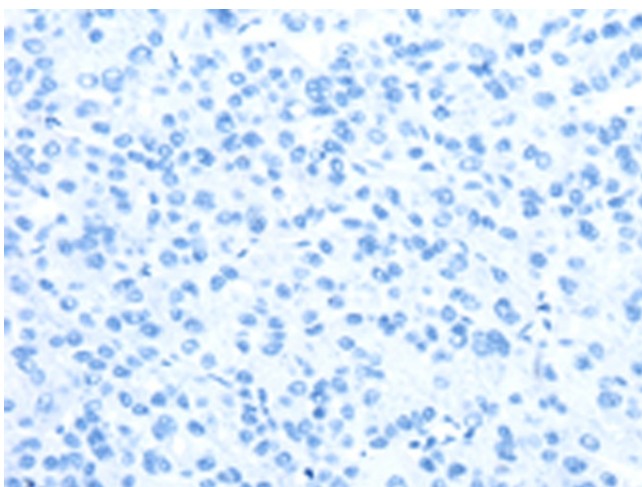
**Product images:**



Gel: 12%SDS-PAGE  
 Lysate: 40 µg  
 Lane 1-2: HeLa cells  
 Human fetal liver tissue  
 Primary antibody: [TA365104] (ITPA Antibody) at dilution 1/400  
 Secondary antibody: Goat anti rabbit IgG at 1/8000 dilution  
 Exposure time: 5 minutes



Immunohistochemistry of paraffin-embedded Human liver cancer tissue using [TA365104] (ITPA Antibody) at dilution 1/25 (Original magnification: ×200)



Immunohistochemistry of paraffin-embedded Human liver cancer tissue using [TA365104] (ITPA Antibody) at dilution 1/25, treated with fusion protein. (Original magnification:  $\times 200$ )