

Product datasheet for **TA365096**

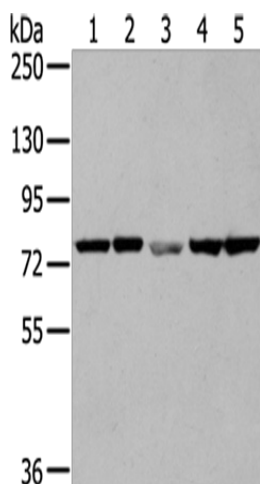
Transglutaminase 5 (TGM5) Rabbit Polyclonal Antibody

Product data:

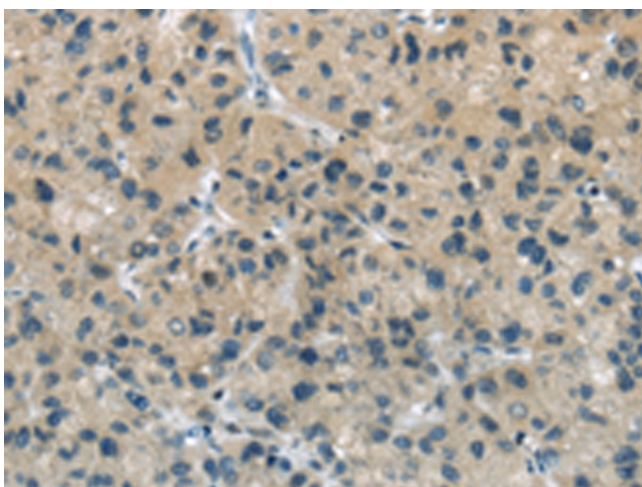
Product Type:	Primary Antibodies
Applications:	IHC, WB
Recommended Dilution:	WB: 500-2000 WB positive control: Hela and A431 cells, Mouse skin tissue, MCF7 and K562 cells IHC: 25-100 Positive control: Human liver cancer Predicted cell location: Cytoplasm and Cell membrane
Reactivity:	Human, Mouse
Host:	Rabbit
Isotype:	IgG
Clonality:	Polyclonal
Immunogen:	Fusion protein of human TGM5
Formulation:	pH7.4 PBS, 0.05% NaN ₃ , 40% Glycerol
Concentration:	lot specific
Purification:	Antigen affinity purification
Conjugation:	Unconjugated
Storage:	Store at -20°C.
Stability:	1 year
Predicted Protein Size:	81 kDa
Gene Name:	transglutaminase 5
Database Link:	Entrez Gene 9333 Human O43548
Background:	This gene encodes a member of the transglutaminase family. The encoded protein catalyzes formation of protein cross-links between glutamine and lysine residues, often resulting in stabilization of protein assemblies. This reaction is calcium dependent. Mutations in this gene have been associated with acral peeling skin syndrome.
Synonyms:	MGC141907; TG(X); TGASE5; TGASEX; TGM6; TGMX; TGX; Transglutaminase-5



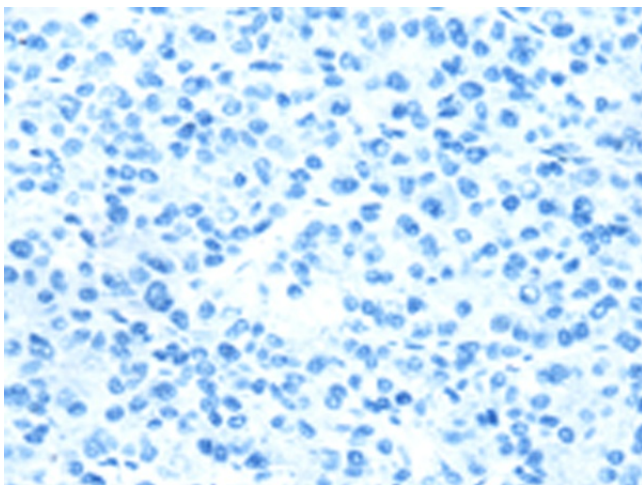
[View online »](#)

Product images:


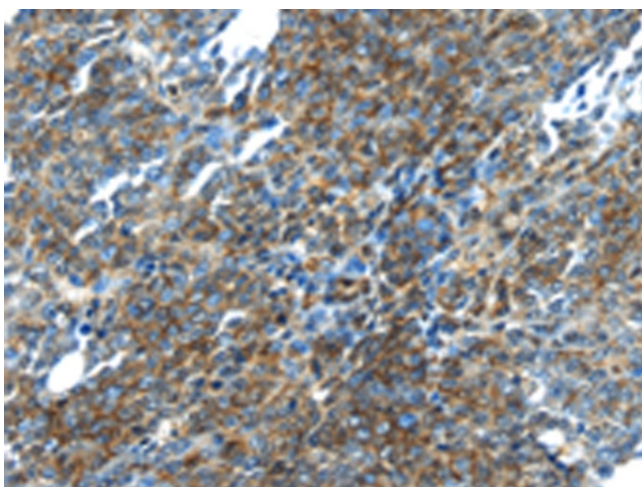
Gel: 6%SDS-PAGE
 Lysate: 40 µg
 Lane 1-5: HeLa cells
 A431 cells
 Mouse skin tissue
 MCF7 cells
 K562 cells
 Primary antibody: TA365096 (TGM5 Antibody) at dilution 1/250
 Secondary antibody: Goat anti rabbit IgG at 1/8000 dilution
 Exposure time: 1 minute



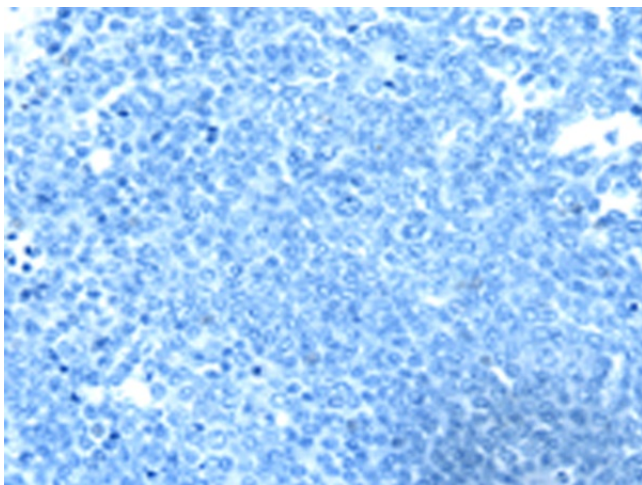
Immunohistochemistry of paraffin-embedded Human liver cancer tissue using TA365096 (TGM5 Antibody) at dilution 1/20 (Original magnification: ×200)



Immunohistochemistry of paraffin-embedded Human liver cancer tissue using TA365096 (TGM5 Antibody) at dilution 1/20, treated with fusion protein. (Original magnification: $\times 200$)



Immunohistochemistry of paraffin-embedded Human ovarian cancer tissue using TA365096 (TGM5 Antibody) at dilution 1/20 (Original magnification: $\times 200$)



Immunohistochemistry of paraffin-embedded Human ovarian cancer tissue using TA365096 (TGM5 Antibody) at dilution 1/20, treated with fusion protein. (Original magnification: $\times 200$)