

Product datasheet for **TA365094**

Transaldolase 1 (TALDO1) Rabbit Polyclonal Antibody

Product data:

Product Type:	Primary Antibodies
Applications:	IHC, WB
Recommended Dilution:	WB: 500-2000 WB positive control: Human fetal brain and placenta tissue, Mouse brain tissue IHC: 25-100 Positive control: Human esophagus cancer Predicted cell location: Nucleus
Reactivity:	Human, Mouse, Rat
Host:	Rabbit
Isotype:	IgG
Clonality:	Polyclonal
Immunogen:	Fusion protein of human TALDO1
Formulation:	pH7.4 PBS, 0.05% NaN ₃ , 40% Glycerol
Concentration:	lot specific
Purification:	Antigen affinity purification
Conjugation:	Unconjugated
Storage:	Store at -20°C.
Stability:	1 year
Predicted Protein Size:	38 kDa
Gene Name:	transaldolase 1
Database Link:	Entrez Gene 6888 Human P37837



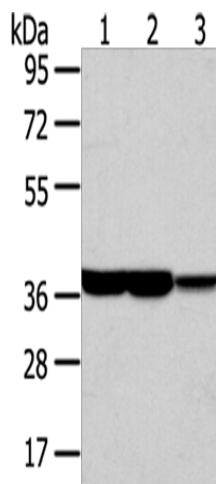
[View online »](#)

Background:

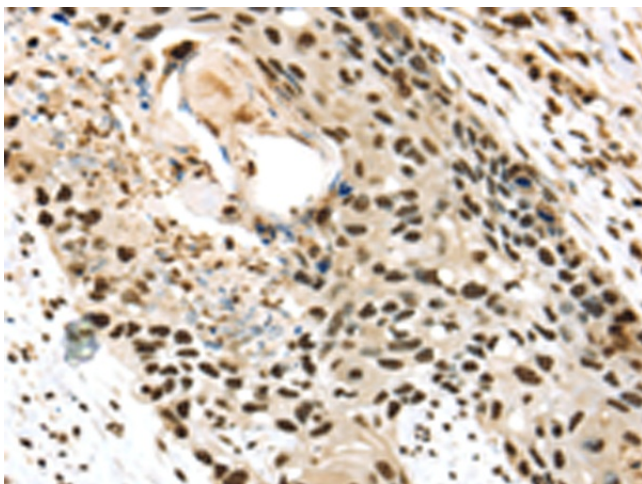
Transaldolase 1 is a key enzyme of the nonoxidative pentose phosphate pathway providing ribose-5-phosphate for nucleic acid synthesis and NADPH for lipid biosynthesis. This pathway can also maintain glutathione at a reduced state and thus protect sulfhydryl groups and cellular integrity from oxygen radicals. The functional gene of transaldolase 1 is located on chromosome 11 and a pseudogene is identified on chromosome 1 but there are conflicting map locations. The second and third exon of this gene were developed by insertion of a retrotransposable element. This gene is thought to be involved in multiple sclerosis.

Synonyms:

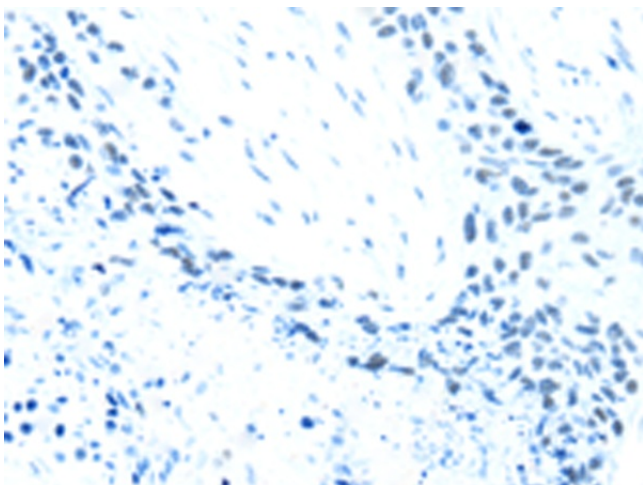
Taldo1

Product images:

Gel: 8%SDS-PAGE
Lysate: 40 µg
Lane 1-3: Human fetal brain tissue
Human placenta tissue
Mouse brain tissue
Primary antibody: TA365094 (TALDO1 Antibody)
at dilution 1/400
Secondary antibody: Goat anti rabbit IgG at
1/8000 dilution
Exposure time: 10 seconds



Immunohistochemistry of paraffin-embedded
Human esophagus cancer tissue using TA365094
(TALDO1 Antibody) at dilution 1/30 (Original
magnification: ×200)



Immunohistochemistry of paraffin-embedded Human esophagus cancer tissue using TA365094 (TALDO1 Antibody) at dilution 1/30, treated with fusion protein. (Original magnification: $\times 200$)