

## Product datasheet for **TA365092S**

### TPX2 Rabbit Polyclonal Antibody

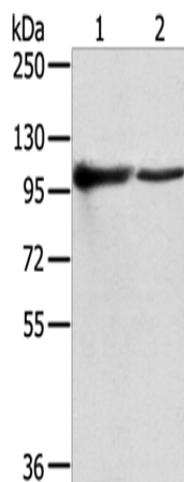
#### Product data:

Product Type:	Primary Antibodies
Applications:	WB
Recommended Dilution:	WB: 500-2000 WB positive control: K562 and A431 cells
Reactivity:	Human, Mouse
Host:	Rabbit
Isotype:	IgG
Clonality:	Polyclonal
Immunogen:	Fusion protein of human TPX2
Formulation:	pH7.4 PBS, 0.05% NaN <sub>3</sub> , 40% Glycerol
Purification:	Antigen affinity purification
Conjugation:	Unconjugated
Storage:	Store at -20°C.
Stability:	1 year
Predicted Protein Size:	86 kDa
Gene Name:	TPX2, microtubule nucleation factor
Database Link:	<a href="#">Entrez Gene 22974 Human Q9ULW0</a>
Background:	TPX2 (targeting protein for Xklp2) is a microtubule-associated protein involved in targeting the motor protein Xklp2 to microtubules. Ran-GTP activates TPX2 for the chromatin-induced microtubule assembly during M phase. Aurora-A kinase associates with TPX2 at the spindle apparatus and may regulate TPX2 via phosphorylation during the spindle assembly. TPX2 appears to play a structural role in spindle formation. TPX2 activates Eg2 in a microtubule-dependent manner by stimulating the phosphorylation and kinase activity of Eg2.
Synonyms:	C20orf1; C20orf2; DIL-2; DIL2; FLS353; GD:C20orf1; HCA519; HCTP4; p100; REPP86



[View online »](#)

## Product images:



Gel: 6%SDS-PAGE  
Lysate: 40 µg  
Lane 1-2: K562 cells  
A431 cells  
Primary antibody: [TA365092] (TPX2 Antibody) at  
dilution 1/800  
Secondary antibody: Goat anti rabbit IgG at  
1/8000 dilution  
Exposure time: 10 seconds