

## Product datasheet for **TA365091S**

### TPSB2 Rabbit Polyclonal Antibody

#### Product data:

Product Type:	Primary Antibodies
Applications:	IHC, WB
Recommended Dilution:	WB: 500-2000 WB positive control: Human left side lung cancer tissue lysate IHC: 25-100 Positive control: Human thyroid cancer Predicted cell location: Secreted
Reactivity:	Human
Host:	Rabbit
Isotype:	IgG
Clonality:	Polyclonal
Immunogen:	Full length fusion protein
Formulation:	pH7.4 PBS, 0.05% NaN <sub>3</sub> , 40% Glycerol
Purification:	Antigen affinity purification
Conjugation:	Unconjugated
Storage:	Store at -20°C.
Stability:	1 year
Predicted Protein Size:	31 kDa
Gene Name:	tryptase beta 2 (gene/pseudogene)
Database Link:	<a href="#">Entrez Gene 64499 Human P20231</a>



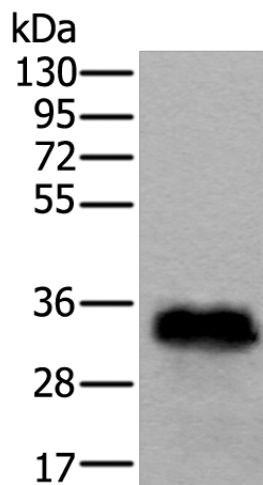
[View online »](#)

**Background:**

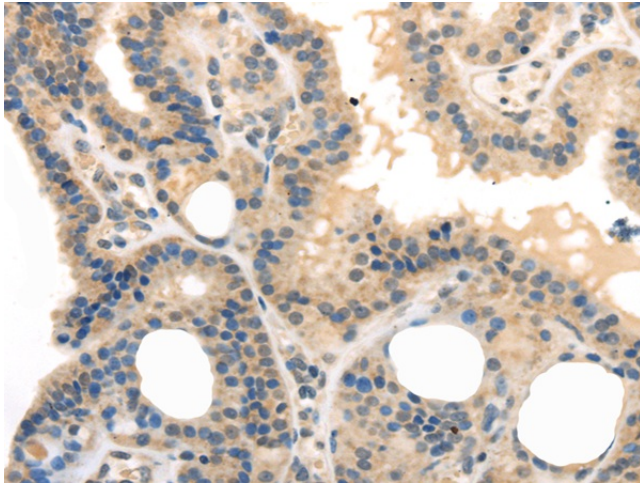
Tryptases comprise a family of trypsin-like serine proteases, the peptidase family S1. Tryptases are enzymatically active only as heparin-stabilized tetramers, and they are resistant to all known endogenous proteinase inhibitors. Several tryptase genes are clustered on chromosome 16p13.3. These genes are characterized by several distinct features. They have a highly conserved 3' UTR and contain tandem repeat sequences at the 5' flank and 3' UTR which are thought to play a role in regulation of the mRNA stability. These genes have an intron immediately upstream of the initiator Met codon, which separates the site of transcription initiation from protein coding sequence. This feature is characteristic of tryptases but is unusual in other genes. The alleles of this gene exhibit an unusual amount of sequence variation, such that the alleles were once thought to represent two separate genes, beta II and beta III. Beta tryptases appear to be the main isoenzymes expressed in mast cells, whereas in basophils, alpha-tryptases predominate. Tryptases have been implicated as mediators in the pathogenesis of asthma and other allergic and inflammatory disorders.

**Synonyms:**

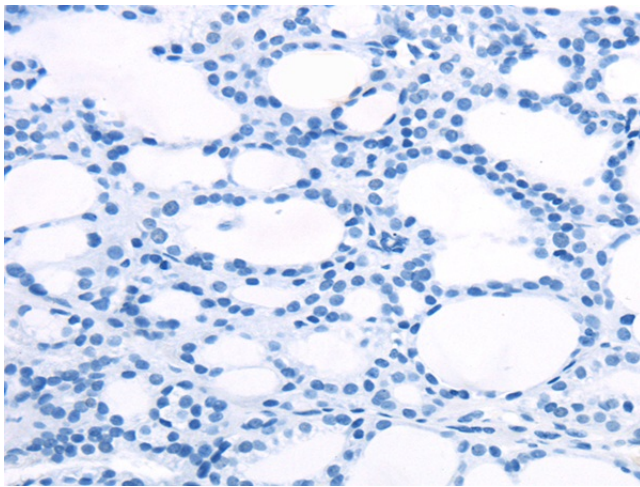
OTTHUMP00000208944; TPS2; Tryptase-2; tryptaseB; tryptaseC

**Product images:**

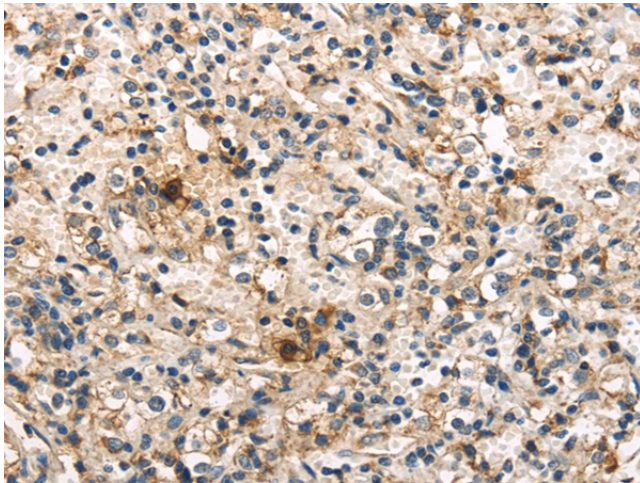
Gel: 8%SDS-PAGE  
Lysate: 20 µg  
Lane: Human left side lung cancer tissue lysate  
Primary antibody: [TA365091] (TPSB2 Antibody) at dilution 1/200  
Secondary antibody: Goat anti rabbit IgG at 1/8000 dilution  
Exposure time: 5 seconds



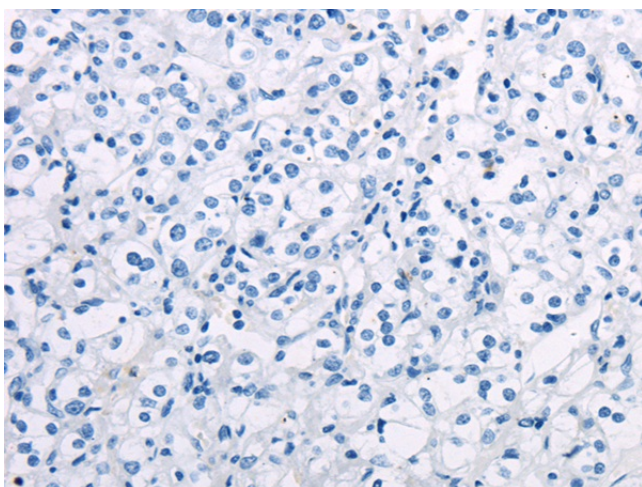
Immunohistochemistry of paraffin-embedded Human thyroid cancer tissue using [TA365091] (TPSB2 Antibody) at dilution 1/20 (Original magnification: x200)



Immunohistochemistry of paraffin-embedded Human thyroid cancer tissue using [TA365091] (TPSB2 Antibody) at dilution 1/20, treated with fusion protein. (Original magnification: x200)



Immunohistochemistry of paraffin-embedded Human prostate cancer tissue using [TA365091] (TPSB2 Antibody) at dilution 1/20 (Original magnification: x200)



Immunohistochemistry of paraffin-embedded Human prostate cancer tissue using [TA365091] (TPSB2 Antibody) at dilution 1/20, treated with fusion protein. (Original magnification: ×200)