

Product datasheet for **TA365090**

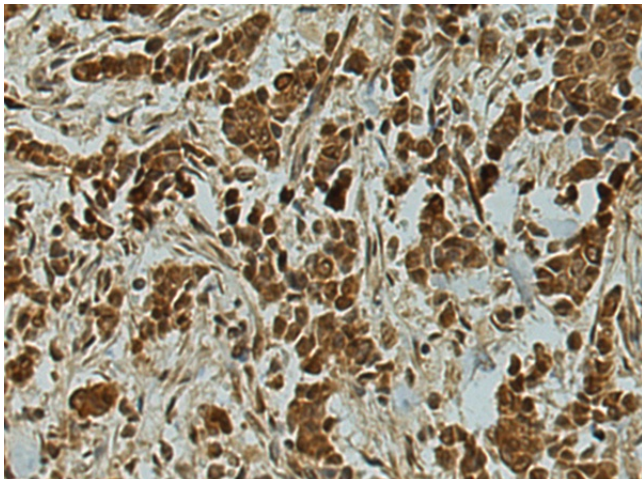
MSANTD3-TMEFF1 Rabbit Polyclonal Antibody

Product data:

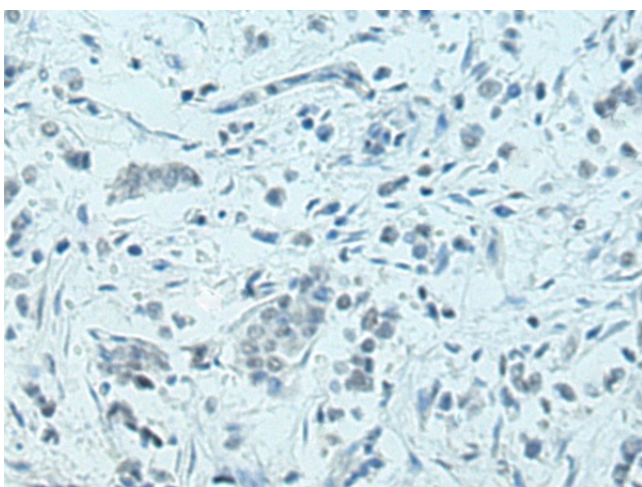
Product Type:	Primary Antibodies
Applications:	IHC
Recommended Dilution:	IHC: 150-300 Positive control: Human breast cancer Predicted cell location: Cytoplasm and Nucleus
Reactivity:	Human, Mouse, Rat
Host:	Rabbit
Isotype:	IgG
Clonality:	Polyclonal
Immunogen:	Fusion protein of human TMEFF1
Formulation:	pH7.4 PBS, 0.05% NaN ₃ , 40% Glycerol
Concentration:	lot specific
Purification:	Antigen affinity purification
Conjugation:	Unconjugated
Storage:	Store at -20°C.
Stability:	1 year
Gene Name:	MSANTD3-TMEFF1 readthrough
Database Link:	Entrez Gene 100526694 Human Q8IYR6
Background:	May inhibit NODAL and BMP signaling during neural patterning (By similarity). May be a tumor suppressor in brain cancers.



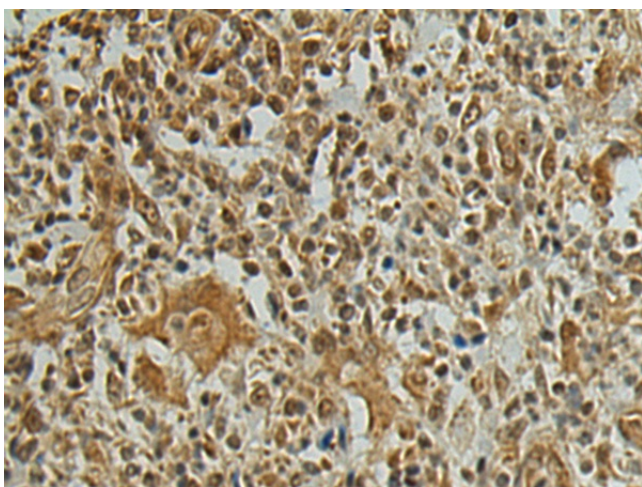
[View online »](#)

Product images:

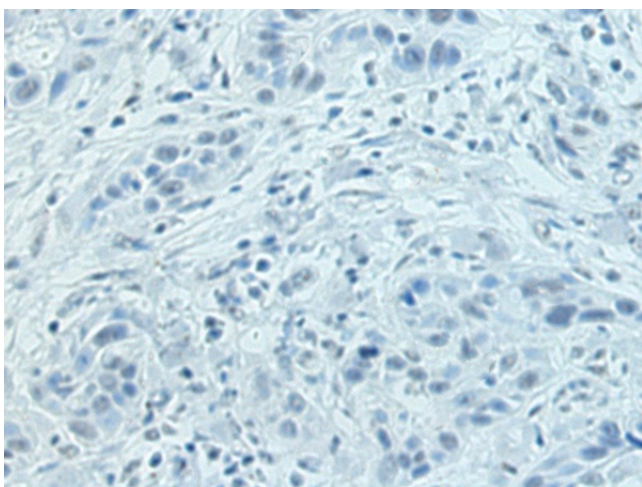
Immunohistochemistry of paraffin-embedded Human breast cancer tissue using TA365090 (TMEFF1 Antibody) at dilution 1/130 (Original magnification: $\times 200$)



Immunohistochemistry of paraffin-embedded Human breast cancer tissue using TA365090 (TMEFF1 Antibody) at dilution 1/130, treated with fusion protein. (Original magnification: $\times 200$)



Immunohistochemistry of paraffin-embedded Human esophagus cancer tissue using TA365090 (TMEFF1 Antibody) at dilution 1/130 (Original magnification: $\times 200$)



Immunohistochemistry of paraffin-embedded Human esophagus cancer tissue using TA365090 (TMEFF1 Antibody) at dilution 1/130, treated with fusion protein. (Original magnification: $\times 200$)