

Product datasheet for **TA365083S**

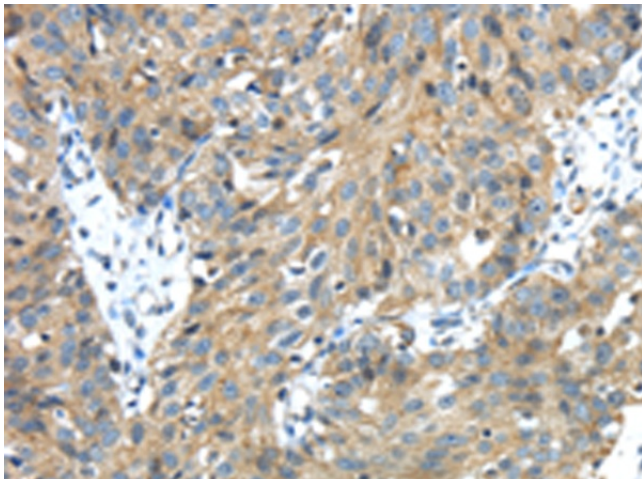
TMPRSS13 Rabbit Polyclonal Antibody

Product data:

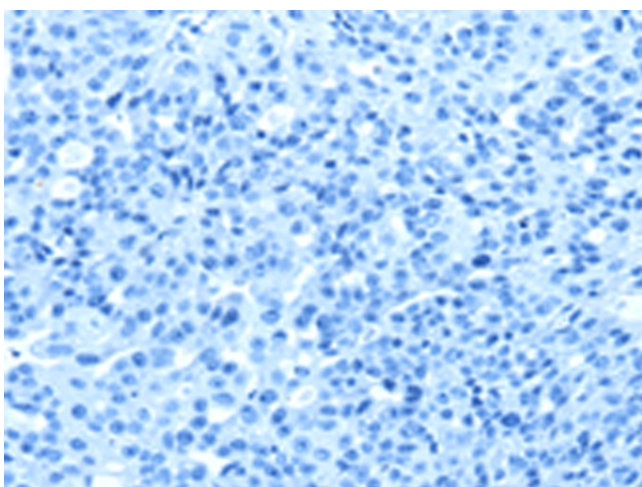
Product Type:	Primary Antibodies
Applications:	IHC
Recommended Dilution:	IHC: 25-100 Positive control: Human breast cancer Predicted cell location: Cytoplasm and Cell membrane
Reactivity:	Human, Mouse
Host:	Rabbit
Isotype:	IgG
Clonality:	Polyclonal
Immunogen:	Fusion protein of human TMPRSS13
Formulation:	pH7.4 PBS, 0.05% NaN ₃ , 40% Glycerol
Purification:	Antigen affinity purification
Conjugation:	Unconjugated
Storage:	Store at -20°C.
Stability:	1 year
Gene Name:	transmembrane protease, serine 13
Database Link:	Entrez Gene 84000 Human Q9BYE2
Background:	This gene encodes a member of the type II transmembrane serine protease family. Transmembrane serine proteases are regulated by protease inhibitors and known to function in development, homeostasis, infection, and tumorigenesis. Multiple transcript variants encoding different isoforms have been found for this gene.
Synonyms:	MSP; MSPL; MSPS; TMPRSS11



[View online »](#)

Product images:

Immunohistochemistry of paraffin-embedded Human breast cancer tissue using [TA365083] (TMPRSS13 Antibody) at dilution 1/30 (Original magnification: $\times 200$)



Immunohistochemistry of paraffin-embedded Human breast cancer tissue using [TA365083] (TMPRSS13 Antibody) at dilution 1/30, treated with fusion protein. (Original magnification: $\times 200$)