

## Product datasheet for **TA365082S**

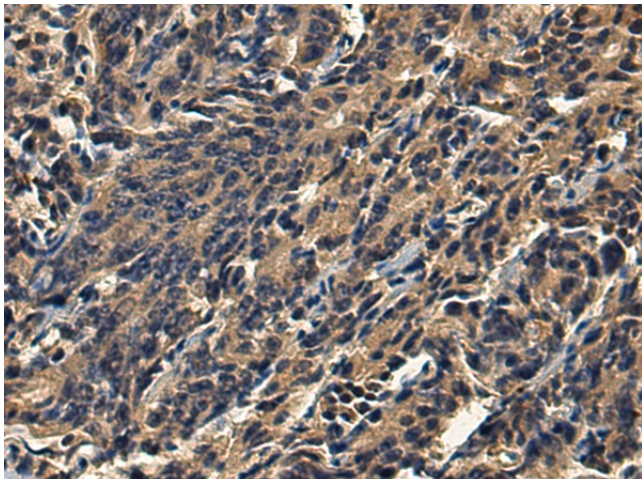
### **TMPRSS5 Rabbit Polyclonal Antibody**

#### **Product data:**

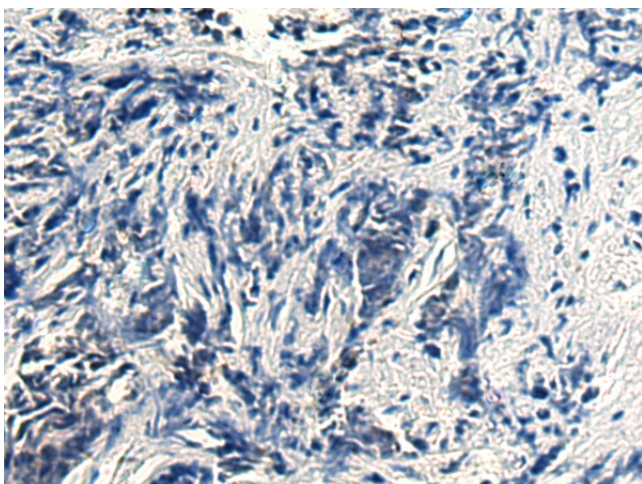
<b>Product Type:</b>	Primary Antibodies
<b>Applications:</b>	IHC
<b>Recommended Dilution:</b>	IHC: 200-400 Positive control: Human prostate cancer Predicted cell location: Cytoplasm
<b>Reactivity:</b>	Human, Mouse
<b>Host:</b>	Rabbit
<b>Isotype:</b>	IgG
<b>Clonality:</b>	Polyclonal
<b>Immunogen:</b>	Fusion protein of human TMPRSS5
<b>Formulation:</b>	pH7.4 PBS, 0.05% NaN <sub>3</sub> , 40% Glycerol
<b>Purification:</b>	Antigen affinity purification
<b>Conjugation:</b>	Unconjugated
<b>Storage:</b>	Store at -20°C.
<b>Stability:</b>	1 year
<b>Gene Name:</b>	transmembrane protease, serine 5
<b>Database Link:</b>	<a href="#">Entrez Gene 80975 Human Q9H3S3</a>
<b>Background:</b>	This gene encodes a protein that belongs to the serine protease family. Serine proteases are known to be involved in many physiological and pathological processes. Alternative splicing results in multiple transcript variants.
<b>Synonyms:</b>	MGC141886; MGC148044; SPINESIN



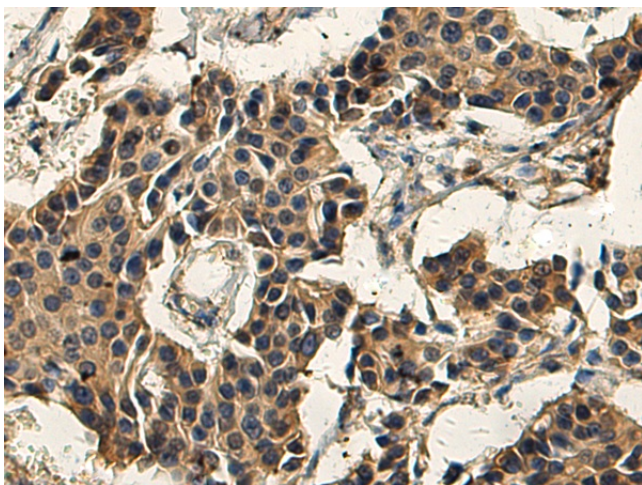
[View online »](#)

**Product images:**

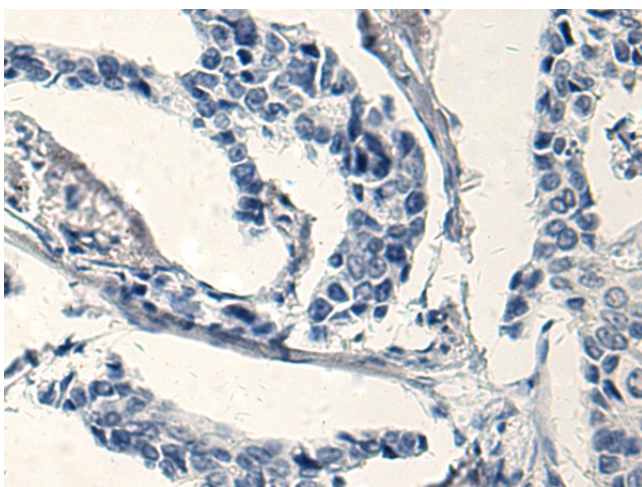
Immunohistochemistry of paraffin-embedded Human prostate cancer tissue using [TA365082] (TMPRSS5 Antibody) at dilution 1/220 (Original magnification:  $\times 200$ )



Immunohistochemistry of paraffin-embedded Human prostate cancer tissue using [TA365082] (TMPRSS5 Antibody) at dilution 1/220, treated with fusion protein. (Original magnification:  $\times 200$ )



Immunohistochemistry of paraffin-embedded Human breast cancer tissue using [TA365082] (TMPRSS5 Antibody) at dilution 1/220 (Original magnification: ×200)



Immunohistochemistry of paraffin-embedded Human breast cancer tissue using [TA365082] (TMPRSS5 Antibody) at dilution 1/220, treated with fusion protein. (Original magnification: ×200)