

Product datasheet for **TA365079S**

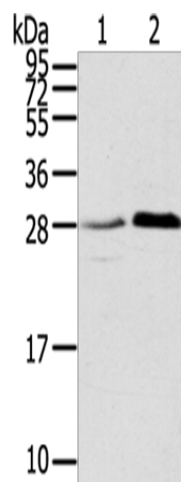
TMED1 Rabbit Polyclonal Antibody

Product data:

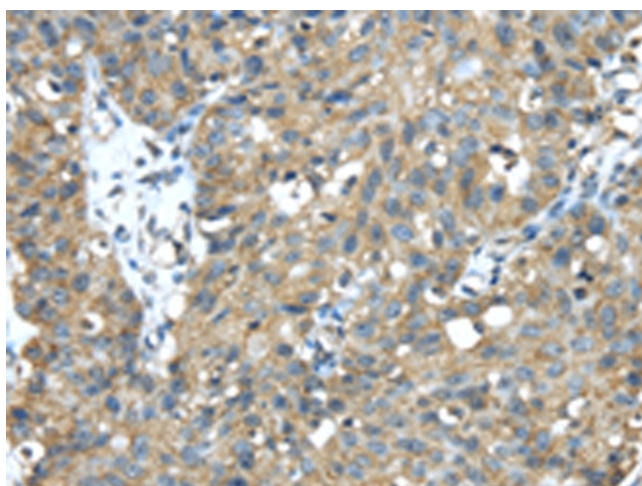
Product Type:	Primary Antibodies
Applications:	IHC, WB
Recommended Dilution:	WB: 200-1000 WB positive control: 231 and A172 cells IHC: 25-100 Positive control: Human breast cancer Predicted cell location: Cytoplasm
Reactivity:	Human, Mouse, Rat
Host:	Rabbit
Isotype:	IgG
Clonality:	Polyclonal
Immunogen:	Fusion protein of human TMED1
Formulation:	pH7.4 PBS, 0.05% NaN ₃ , 40% Glycerol
Purification:	Antigen affinity purification
Conjugation:	Unconjugated
Storage:	Store at -20°C.
Stability:	1 year
Predicted Protein Size:	25 kDa
Gene Name:	transmembrane p24 trafficking protein 1
Database Link:	Entrez Gene 11018 Human Q13445
Background:	This gene belongs to the TMED (transmembrane emp24 domain-containing) protein family, which is involved in the vesicular trafficking of proteins. The protein encoded by this gene was identified by its interaction with interleukin 1 receptor-like 1 (IL1RL1) and may play a role in innate immunity. This protein lacks any similarity to other interleukin 1 ligands. Alternative splicing results in multiple transcript variants of this gene.
Synonyms:	IL1rl1; IL1RL1LG; MGC1270; ST2L



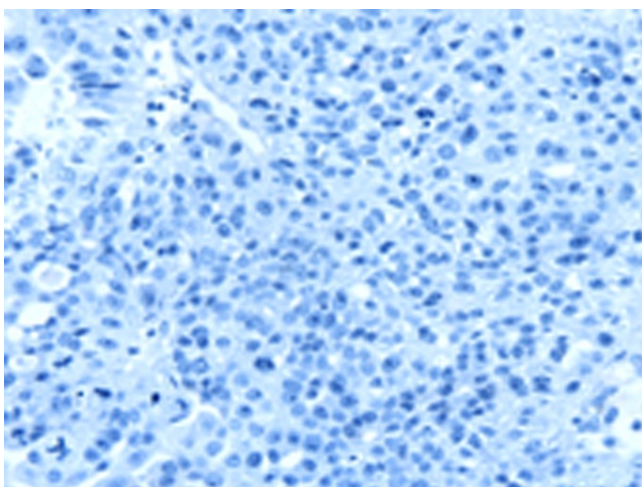
[View online »](#)

Product images:

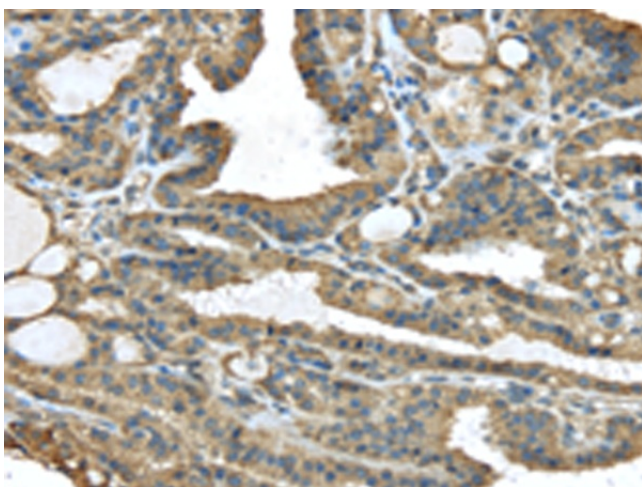
Gel: 12%SDS-PAGE
Lysate: 40 µg
Lane 1-2: 231 cells
A172 cells
Primary antibody: [TA365079] (TMED1 Antibody)
at dilution 1/400
Secondary antibody: Goat anti rabbit IgG at
1/8000 dilution
Exposure time: 40 seconds



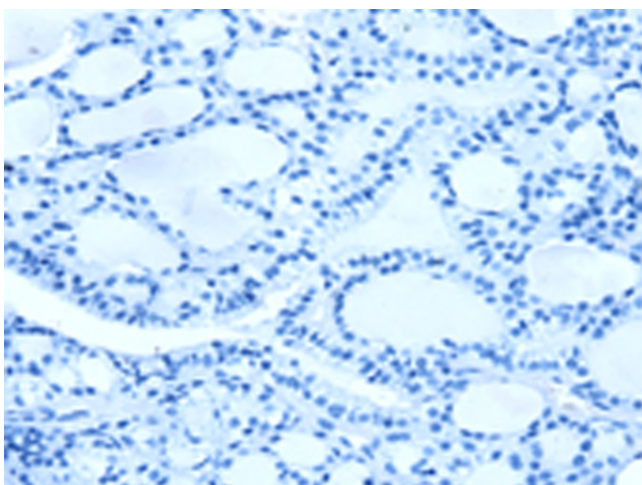
Immunohistochemistry of paraffin-embedded
Human breast cancer tissue using [TA365079]
(TMED1 Antibody) at dilution 1/35 (Original
magnification: ×200)



Immunohistochemistry of paraffin-embedded Human breast cancer tissue using [TA365079] (TMED1 Antibody) at dilution 1/35, treated with fusion protein. (Original magnification: $\times 200$)



Immunohistochemistry of paraffin-embedded Human thyroid cancer tissue using [TA365079] (TMED1 Antibody) at dilution 1/35 (Original magnification: $\times 200$)



Immunohistochemistry of paraffin-embedded Human thyroid cancer tissue using [TA365079] (TMED1 Antibody) at dilution 1/35, treated with fusion protein. (Original magnification: $\times 200$)