

Product datasheet for **TA365073S**

TRIM26 Rabbit Polyclonal Antibody

Product data:

Product Type:	Primary Antibodies
Applications:	IHC, WB
Recommended Dilution:	WB: 1000-5000 WB positive control: 293T, HepG2 and Hela cell lysates IHC: 250-500 Positive control: Human prostate cancer Predicted cell location: Cytoplasm
Reactivity:	Human, Mouse, Rat
Host:	Rabbit
Isotype:	IgG
Clonality:	Polyclonal
Immunogen:	Fusion protein of human TRIM26
Formulation:	pH7.4 PBS, 0.05% NaN ₃ , 40% Glycerol
Purification:	Antigen affinity purification
Conjugation:	Unconjugated
Storage:	Store at -20°C.
Stability:	1 year
Predicted Protein Size:	62 kDa
Gene Name:	tripartite motif containing 26
Database Link:	Entrez Gene 7726 Human Q12899

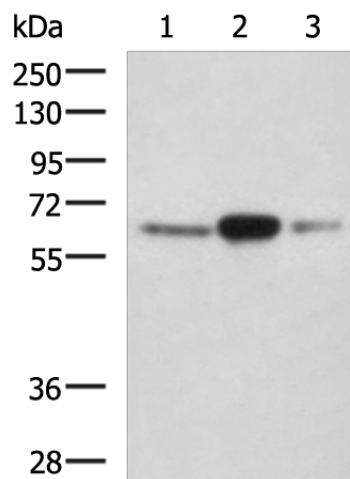
Background: The protein encoded by this gene is a member of the tripartite motif (TRIM) family. The TRIM motif includes three zinc-binding domains, a RING, a B-box type 1 and a B-box type 2, and a coiled-coil region. The protein localizes to cytoplasmic bodies. Although the function of the protein is unknown, the RING domain suggests that the protein may have DNA-binding activity. The gene localizes to the major histocompatibility complex (MHC) class I region on chromosome 6. Alternatively spliced transcript variants encoding the same protein have been found for this gene.



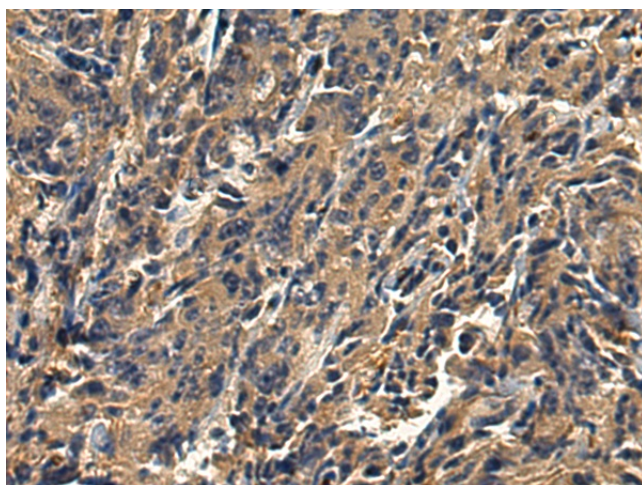
[View online »](#)

Synonyms: AFP; OTTHUMP00000161458; OTTHUMP00000161460; RNF95; ZNF173

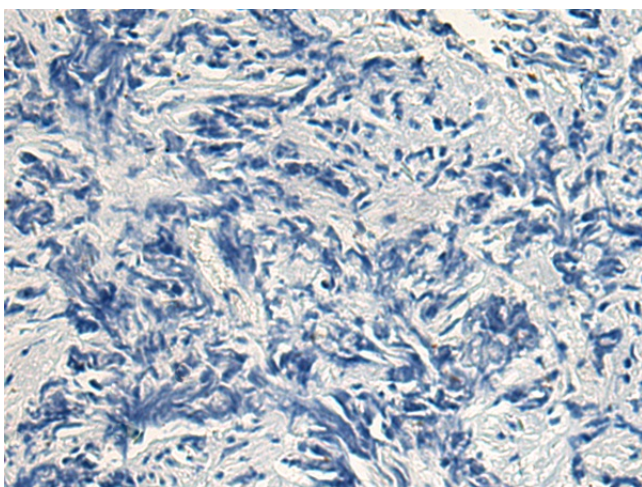
Product images:



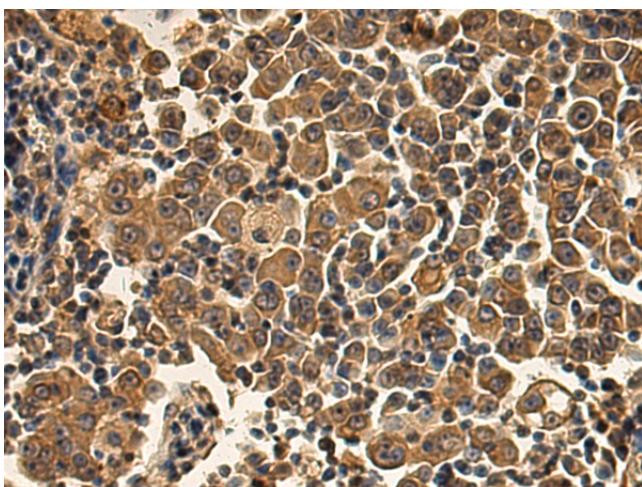
Gel: 8%SDS-PAGE
 Lysate: 40 µg
 Lane 1-3: 293T
 HepG2 and Hela cell lysates
 Primary antibody: [TA365073] (TRIM26 Antibody) at dilution 1/1000
 Secondary antibody: Goat anti rabbit IgG at 1/5000 dilution
 Exposure time: 2 minutes



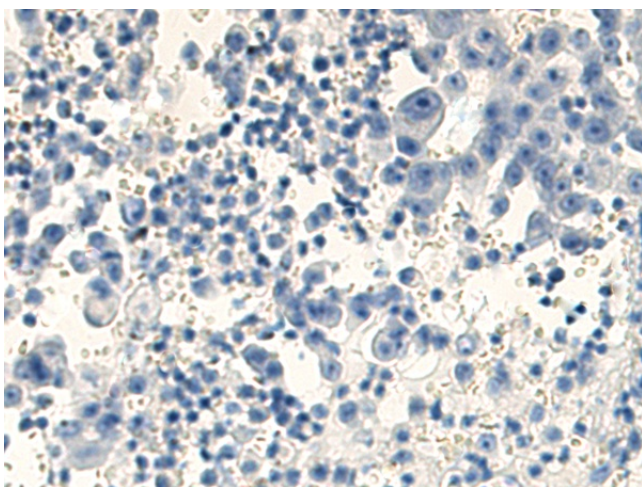
Immunohistochemistry of paraffin-embedded Human prostate cancer tissue using [TA365073] (TRIM26 Antibody) at dilution 1/240 (Original magnification: ×200)



Immunohistochemistry of paraffin-embedded Human prostate cancer tissue using [TA365073] (TRIM26 Antibody) at dilution 1/240, treated with fusion protein. (Original magnification: $\times 200$)



Immunohistochemistry of paraffin-embedded Human lung cancer tissue using [TA365073] (TRIM26 Antibody) at dilution 1/240 (Original magnification: $\times 200$)



Immunohistochemistry of paraffin-embedded Human lung cancer tissue using [TA365073] (TRIM26 Antibody) at dilution 1/240, treated with fusion protein. (Original magnification: $\times 200$)