

Product datasheet for **TA365073**

TRIM26 Rabbit Polyclonal Antibody

Product data:

Product Type:	Primary Antibodies
Applications:	IHC, WB
Recommended Dilution:	WB: 1000-5000 WB positive control: 293T, HepG2 and Hela cell lysates IHC: 250-500 Positive control: Human prostate cancer Predicted cell location: Cytoplasm
Reactivity:	Human, Mouse, Rat
Host:	Rabbit
Isotype:	IgG
Clonality:	Polyclonal
Immunogen:	Fusion protein of human TRIM26
Formulation:	pH7.4 PBS, 0.05% NaN ₃ , 40% Glycerol
Concentration:	lot specific
Purification:	Antigen affinity purification
Conjugation:	Unconjugated
Storage:	Store at -20°C.
Stability:	1 year
Predicted Protein Size:	62 kDa
Gene Name:	tripartite motif containing 26
Database Link:	Entrez Gene 7726 Human Q12899



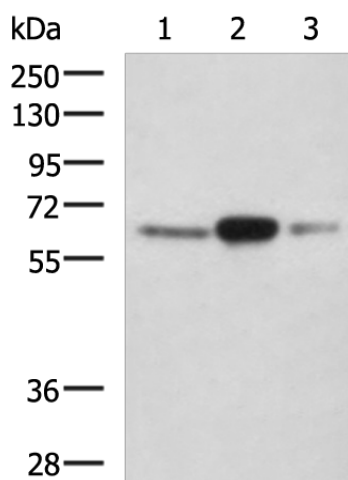
[View online »](#)

Background:

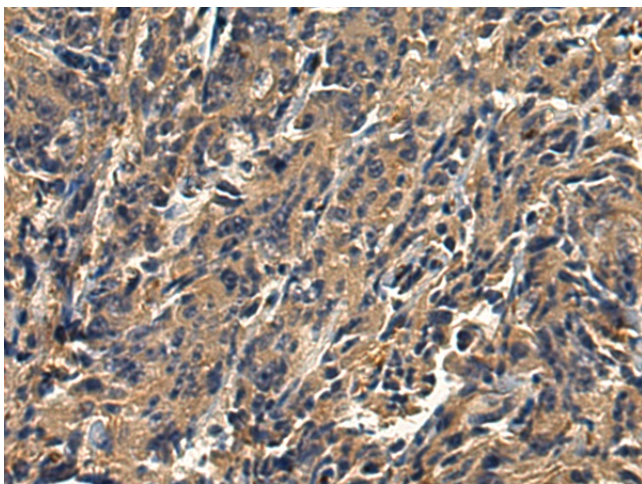
The protein encoded by this gene is a member of the tripartite motif (TRIM) family. The TRIM motif includes three zinc-binding domains, a RING, a B-box type 1 and a B-box type 2, and a coiled-coil region. The protein localizes to cytoplasmic bodies. Although the function of the protein is unknown, the RING domain suggests that the protein may have DNA-binding activity. The gene localizes to the major histocompatibility complex (MHC) class I region on chromosome 6. Alternatively spliced transcript variants encoding the same protein have been found for this gene.

Synonyms:

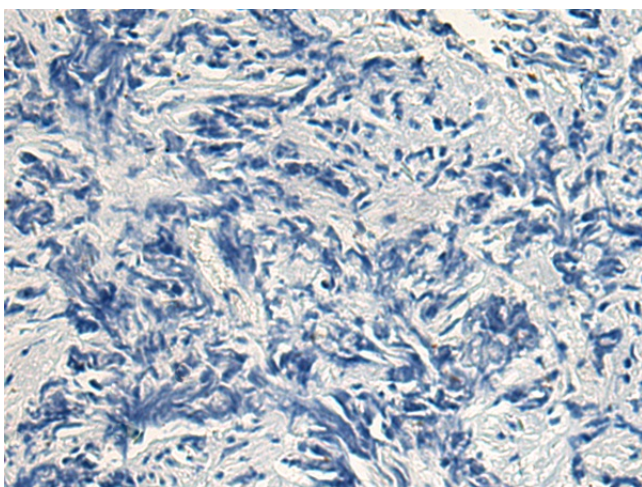
AFP; OTTHUMP00000161458; OTTHUMP00000161460; RNF95; ZNF173

Product images:

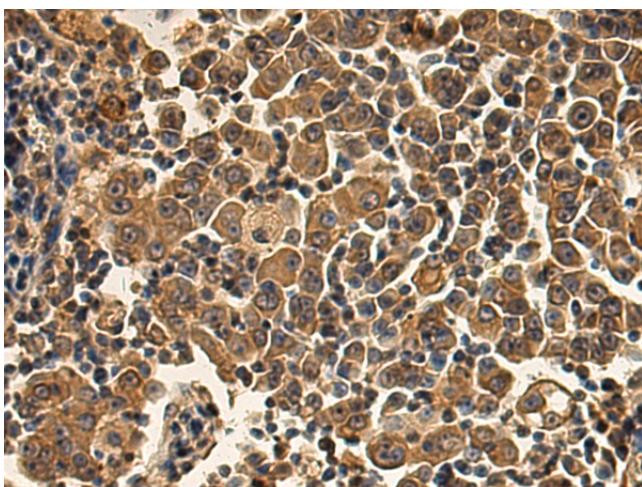
Gel: 8%SDS-PAGE
Lysate: 40 μ g
Lane 1-3: 293T
HepG2 and Hela cell lysates
Primary antibody: TA365073 (TRIM26 Antibody)
at dilution 1/1000
Secondary antibody: Goat anti rabbit IgG at
1/5000 dilution
Exposure time: 2 minutes



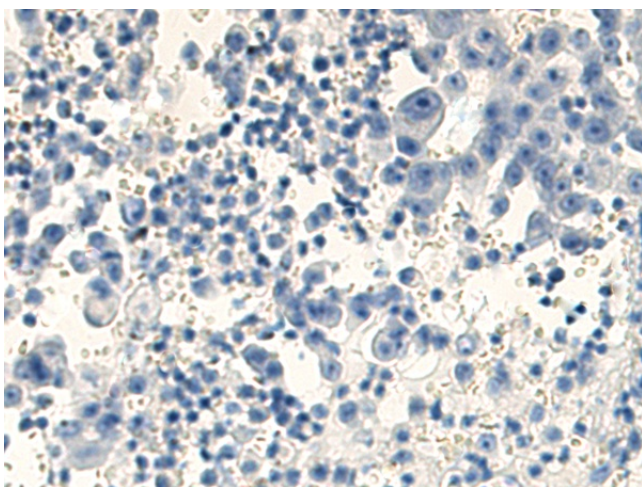
Immunohistochemistry of paraffin-embedded
Human prostate cancer tissue using TA365073
(TRIM26 Antibody) at dilution 1/240 (Original
magnification: \times 200)



Immunohistochemistry of paraffin-embedded Human prostate cancer tissue using TA365073 (TRIM26 Antibody) at dilution 1/240, treated with fusion protein. (Original magnification: ×200)



Immunohistochemistry of paraffin-embedded Human lung cancer tissue using TA365073 (TRIM26 Antibody) at dilution 1/240 (Original magnification: ×200)



Immunohistochemistry of paraffin-embedded Human lung cancer tissue using TA365073 (TRIM26 Antibody) at dilution 1/240, treated with fusion protein. (Original magnification: ×200)