

## Product datasheet for **TA365068S**

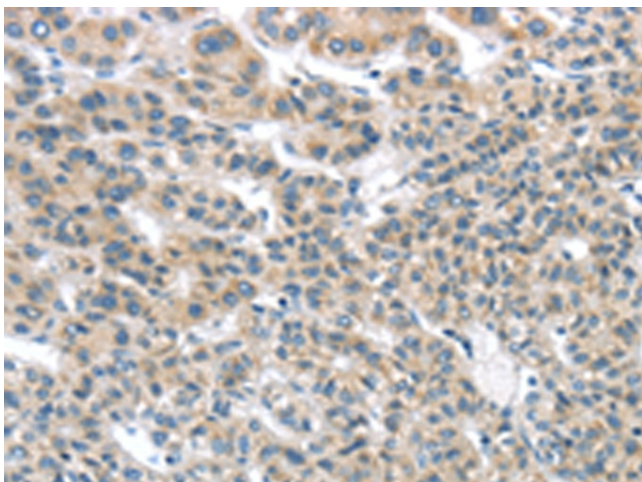
### THSD1 Rabbit Polyclonal Antibody

#### Product data:

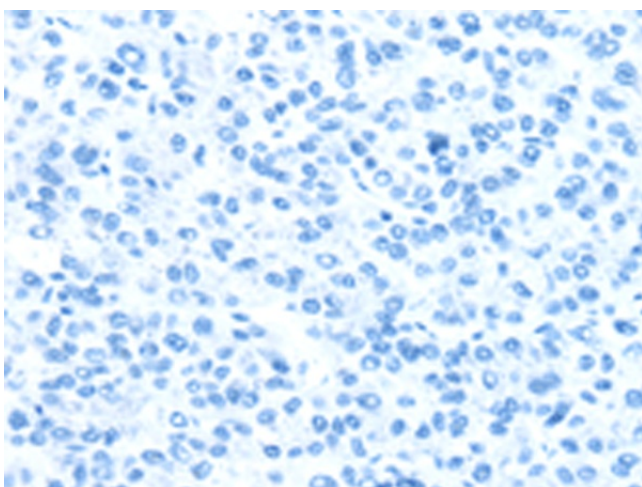
Product Type:	Primary Antibodies
Applications:	IHC
Recommended Dilution:	IHC: 25-100 Positive control: Human liver cancer Predicted cell location: Cytoplasm
Reactivity:	Human, Mouse
Host:	Rabbit
Isotype:	IgG
Clonality:	Polyclonal
Immunogen:	Fusion protein of human THSD1
Formulation:	pH7.4 PBS, 0.05% NaN <sub>3</sub> , 40% Glycerol
Purification:	Antigen affinity purification
Conjugation:	Unconjugated
Storage:	Store at -20°C.
Stability:	1 year
Gene Name:	thrombospondin type 1 domain containing 1
Database Link:	<a href="#">Entrez Gene 55901 Human Q9NS62</a>
Background:	The protein encoded by this gene contains a type 1 thrombospondin domain, which is found in a number of proteins involved in the complement pathway, as well as in extracellular matrix proteins. Alternatively spliced transcript variants encoding different isoforms have been observed for this gene.
Synonyms:	4833423O18Rik; MGC74971; TMTSP; UNQ3010



[View online »](#)

**Product images:**


Immunohistochemistry of paraffin-embedded Human liver cancer tissue using [TA365068] (THSD1 Antibody) at dilution 1/25 (Original magnification: ×200)



Immunohistochemistry of paraffin-embedded Human liver cancer tissue using [TA365068] (THSD1 Antibody) at dilution 1/25, treated with fusion protein. (Original magnification: ×200)