

Product datasheet for **TA365060S**

TCTP (TPT1) Rabbit Polyclonal Antibody

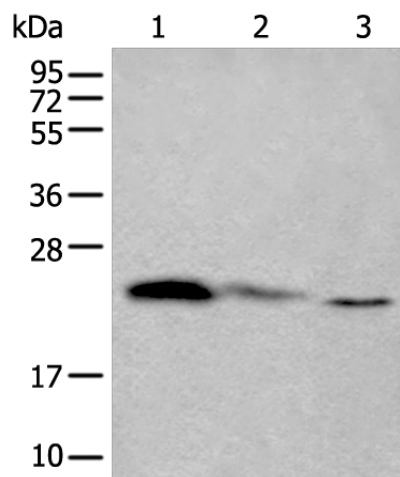
Product data:

Product Type:	Primary Antibodies
Applications:	IHC, WB
Recommended Dilution:	WB: 500-2000 WB positive control: Jurkat,293T and Hela cell lysates IHC: 30-150 Positive control: Human thyroid cancer Predicted cell location: Cytoplasm or Nucleus
Reactivity:	Human, Mouse, Rat
Host:	Rabbit
Isotype:	IgG
Clonality:	Polyclonal
Immunogen:	Full length fusion protein
Formulation:	pH7.4 PBS, 0.05% NaN ₃ , 40% Glycerol
Purification:	Antigen affinity purification
Conjugation:	Unconjugated
Storage:	Store at -20°C.
Stability:	1 year
Predicted Protein Size:	20 kDa
Gene Name:	tumor protein, translationally-controlled 1
Database Link:	Entrez Gene 7178 Human P13693
Background:	Involved in calcium binding and microtubule stabilization.
Synonyms:	FLJ27337; Fortilin; HRF; p02; p23; TCTP

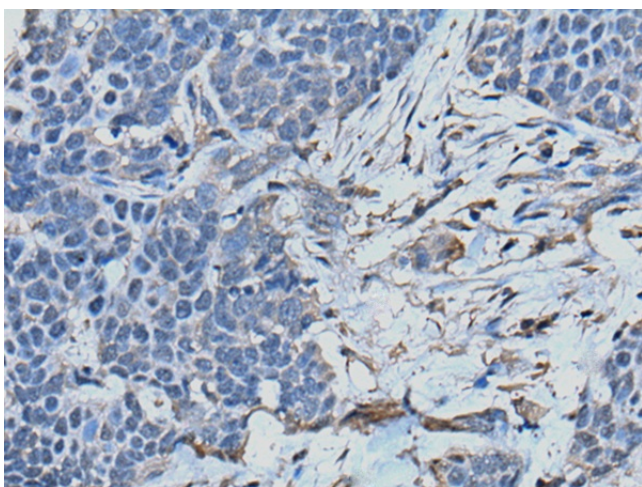


[View online »](#)

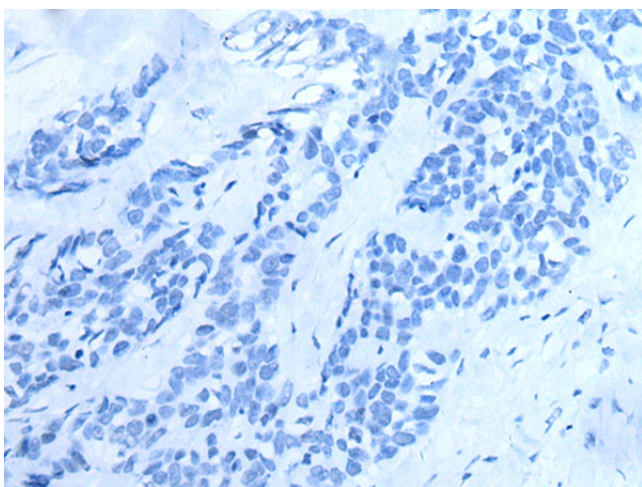
Product images:



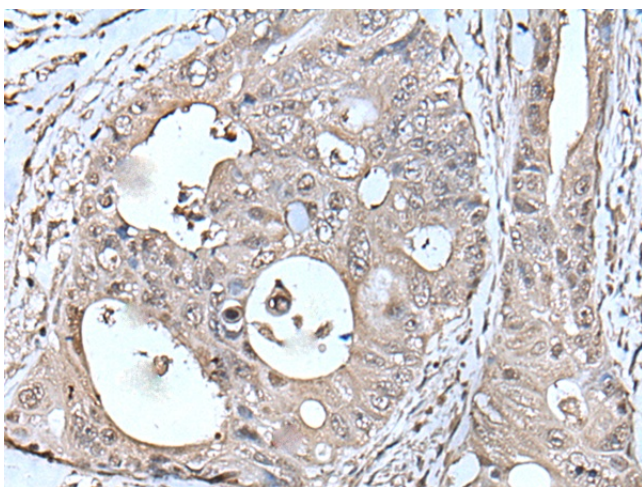
Gel: 12%SDS-PAGE
Lysate: 40 μ g
Lane 1-3: Jurkat
293T and HeLa cell lysates
Primary antibody: [TA365060] (TPT1 Antibody) at
dilution 1/450
Secondary antibody: Goat anti rabbit IgG at
1/8000 dilution
Exposure time: 10 seconds



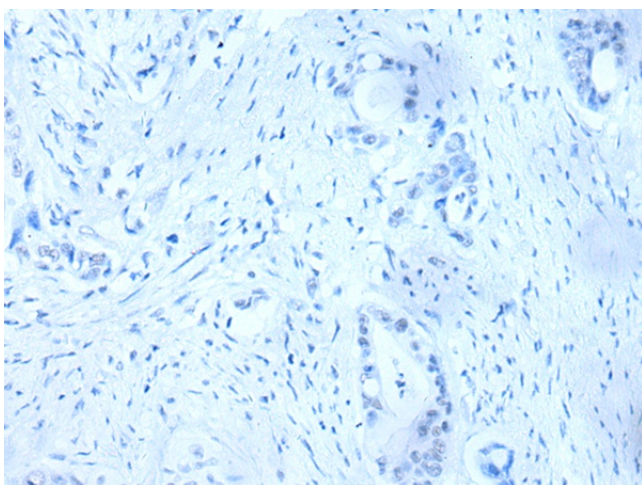
Immunohistochemistry of paraffin-embedded
Human thyroid cancer tissue using [TA365060]
(TPT1 Antibody) at dilution 1/45 (Original
magnification: $\times 200$)



Immunohistochemistry of paraffin-embedded Human thyroid cancer tissue using [TA365060] (TPT1 Antibody) at dilution 1/45, treated with fusion protein. (Original magnification: $\times 200$)



Immunohistochemistry of paraffin-embedded Human colorectal cancer tissue using [TA365060] (TPT1 Antibody) at dilution 1/45 (Original magnification: $\times 200$)



Immunohistochemistry of paraffin-embedded Human colorectal cancer tissue using [TA365060] (TPT1 Antibody) at dilution 1/45, treated with fusion protein. (Original magnification: $\times 200$)