

Product datasheet for **TA365055S**

TAK1 (MAP3K7) Rabbit Polyclonal Antibody

Product data:

Product Type:	Primary Antibodies
Applications:	IHC, WB
Recommended Dilution:	WB: 1000-5000 WB positive control: K562, Jurkat, HepG2 and 231 cell lysates IHC: 100-200 Positive control: Human liver cancer Predicted cell location: Cytoplasm
Reactivity:	Human, Mouse, Rat
Host:	Rabbit
Isotype:	IgG
Clonality:	Polyclonal
Immunogen:	Fusion protein of human MAP3K7
Formulation:	pH7.4 PBS, 0.05% NaN ₃ , 40% Glycerol
Purification:	Antigen affinity purification
Conjugation:	Unconjugated
Storage:	Store at -20°C.
Stability:	1 year
Predicted Protein Size:	67 kDa
Gene Name:	mitogen-activated protein kinase kinase kinase 7
Database Link:	Entrez Gene 6885 Human O43318



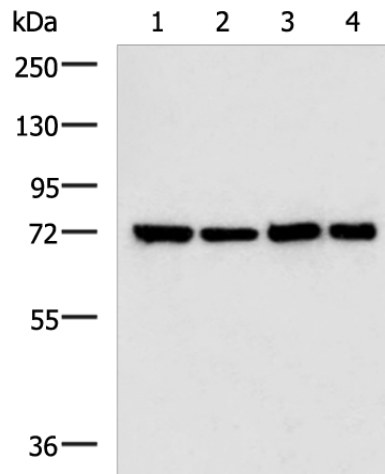
[View online »](#)

Background:

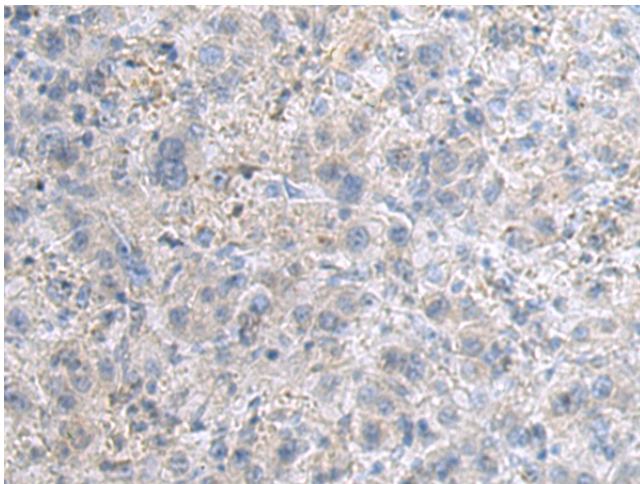
The protein encoded by this gene is a member of the serine/threonine protein kinase family. This kinase mediates the signaling transduction induced by TGF beta and morphogenetic protein (BMP), and controls a variety of cell functions including transcription regulation and apoptosis. In response to IL-1, this protein forms a kinase complex including TRAF6, MAP3K7P1/TAB1 and MAP3K7P2/TAB2; this complex is required for the activation of nuclear factor kappa B. This kinase can also activate MAPK8/JNK, MAP2K4/MKK4, and thus plays a role in the cell response to environmental stresses. Four alternatively spliced transcript variants encoding distinct isoforms have been reported.

Synonyms:

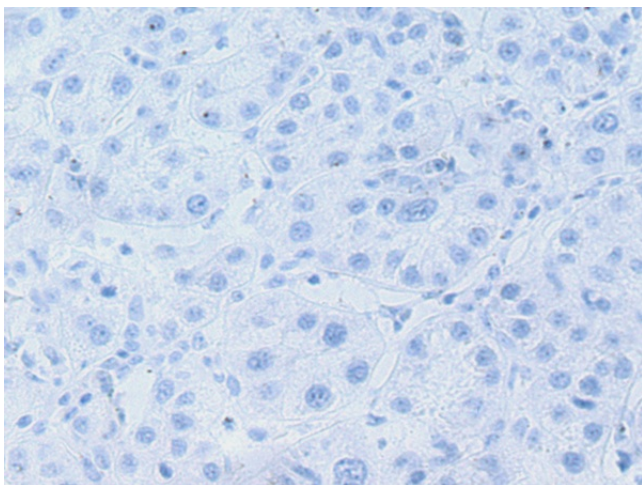
MEKK7; TAK1; TGF1a

Product images:


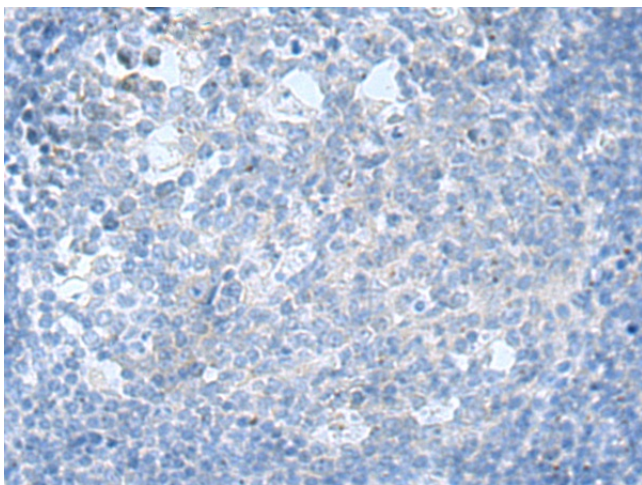
Gel: 8%SDS-PAGE
 Lysate: 40 µg
 Lane 1-4: K562
 Jurkat
 HepG2 and 231 cell lysates
 Primary antibody: [TA365055] (MAP3K7 Antibody)
 at dilution 1/1000
 Secondary antibody: Goat anti rabbit IgG at
 1/5000 dilution
 Exposure time: 1 minute



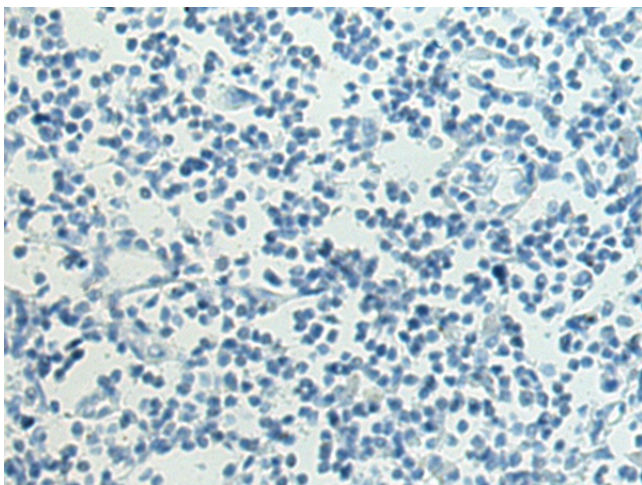
Immunohistochemistry of paraffin-embedded
 Human liver cancer tissue using [TA365055]
 (MAP3K7 Antibody) at dilution 1/140 (Original
 magnification: ×200)



Immunohistochemistry of paraffin-embedded Human liver cancer tissue using [TA365055] (MAP3K7 Antibody) at dilution 1/140, treated with fusion protein. (Original magnification: $\times 200$)



Immunohistochemistry of paraffin-embedded Human tonsil tissue using [TA365055] (MAP3K7 Antibody) at dilution 1/140 (Original magnification: $\times 200$)



Immunohistochemistry of paraffin-embedded Human tonsil tissue using [TA365055] (MAP3K7 Antibody) at dilution 1/140, treated with fusion protein. (Original magnification: $\times 200$)