

Product datasheet for **TA365047**

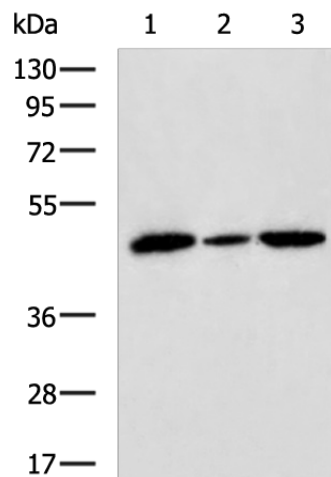
SURF6 Rabbit Polyclonal Antibody

Product data:

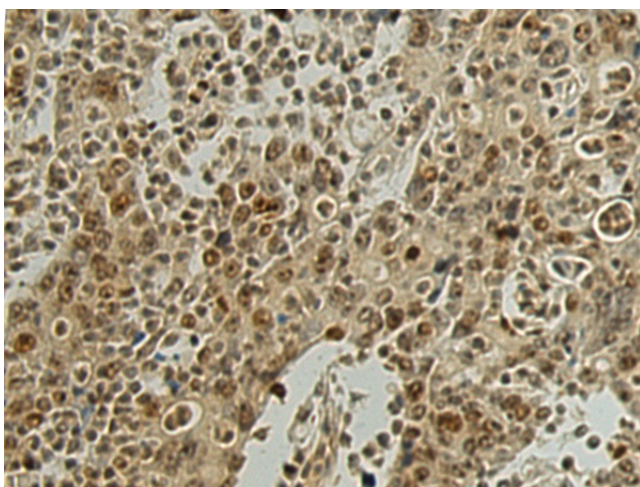
Product Type:	Primary Antibodies
Applications:	IHC, WB
Recommended Dilution:	WB: 500-2000 WB positive control: Hela, K562 and HL-60 cell lysates IHC: 150-300 Positive control: Human gastric cancer Predicted cell location: Nucleus and Cytoplasm
Reactivity:	Human
Host:	Rabbit
Isotype:	IgG
Clonality:	Polyclonal
Immunogen:	Fusion protein of human SURF6
Formulation:	pH7.4 PBS, 0.05% NaN ₃ , 40% Glycerol
Concentration:	lot specific
Purification:	Antigen affinity purification
Conjugation:	Unconjugated
Storage:	Store at -20°C.
Stability:	1 year
Predicted Protein Size:	41 kDa
Gene Name:	surfeit 6
Database Link:	Entrez Gene 6838 Human O75683
Background:	This gene encodes a conserved protein that is localized to the nucleolus. The encoded protein may function as a nucleolar-matrix protein with nucleic acid-binding properties. There is a pseudogene for this gene on chromosome Y. Alternative splicing results in multiple transcript variants.
Synonyms:	FLJ30322; SURF-6



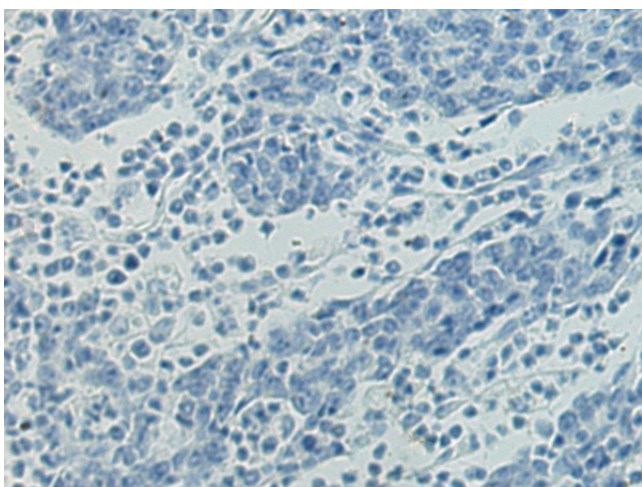
[View online »](#)

Product images:


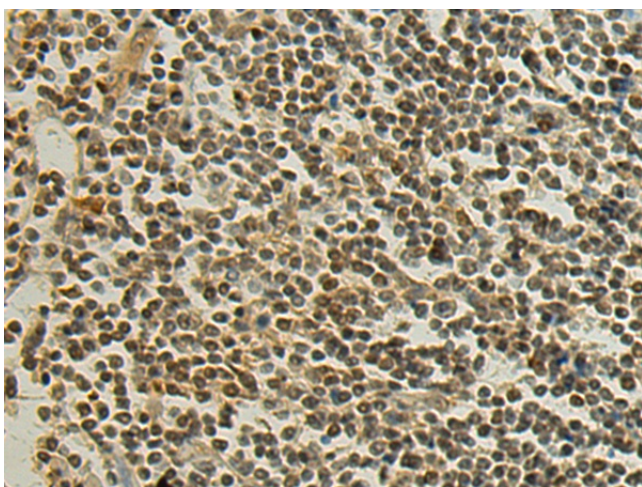
Gel: 8%SDS-PAGE
 Lysate: 40 µg
 Lane 1-3: Hela
 K562 and HL-60 cell lysates
 Primary antibody: TA365047 (SURF6 Antibody) at
 dilution 1/700
 Secondary antibody: Goat anti rabbit IgG at
 1/5000 dilution
 Exposure time: 10 seconds



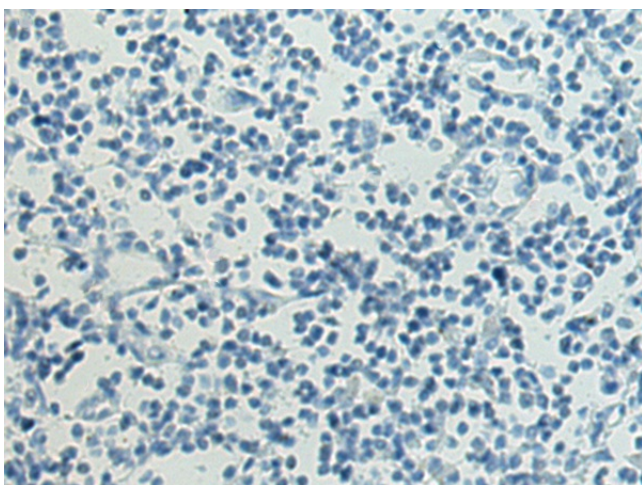
Immunohistochemistry of paraffin-embedded
 Human gastric cancer tissue using TA365047
 (SURF6 Antibody) at dilution 1/150 (Original
 magnification: ×200)



Immunohistochemistry of paraffin-embedded Human gastric cancer tissue using TA365047 (SURF6 Antibody) at dilution 1/150, treated with fusion protein. (Original magnification: ×200)



Immunohistochemistry of paraffin-embedded Human tonsil tissue using TA365047 (SURF6 Antibody) at dilution 1/150 (Original magnification: ×200)



Immunohistochemistry of paraffin-embedded Human tonsil tissue using TA365047 (SURF6 Antibody) at dilution 1/150, treated with fusion protein. (Original magnification: ×200)