

Product datasheet for **TA365040S**

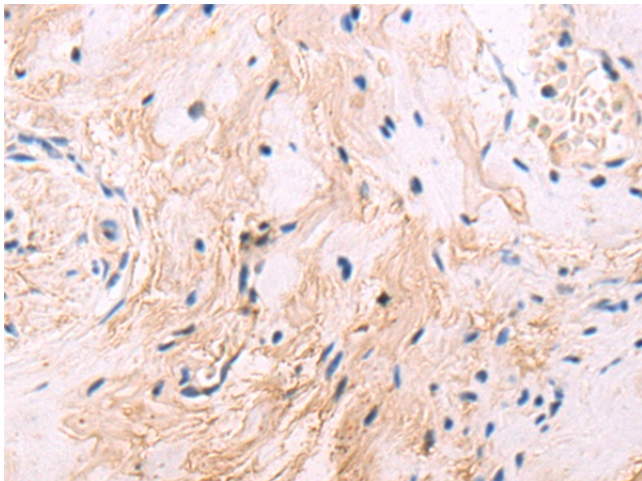
Sprouty 3 (SPRY3) Rabbit Polyclonal Antibody

Product data:

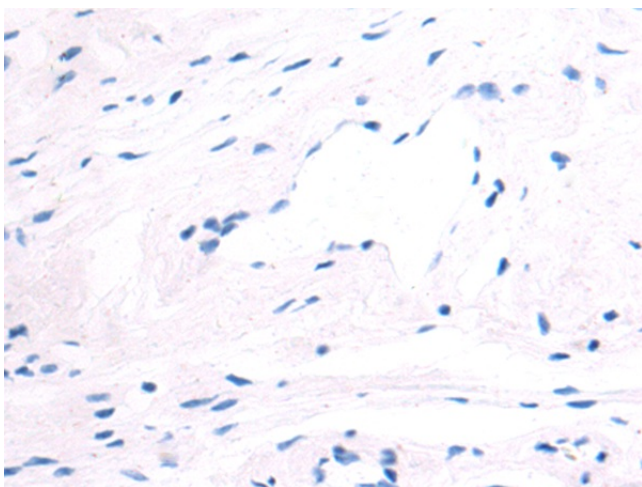
| | |
|-----------------------|---|
| Product Type: | Primary Antibodies |
| Applications: | IHC |
| Recommended Dilution: | IHC: 50-200 Positive control: Human cervical cancer Predicted cell location: Cytoplasm |
| Reactivity: | Human, Mouse |
| Host: | Rabbit |
| Isotype: | IgG |
| Clonality: | Polyclonal |
| Immunogen: | Fusion protein of human SPRY3 |
| Formulation: | pH7.4 PBS, 0.05% NaN ₃ , 40% Glycerol |
| Purification: | Antigen affinity purification |
| Conjugation: | Unconjugated |
| Storage: | Store at -20°C. |
| Stability: | 1 year |
| Gene Name: | sprouty RTK signaling antagonist 3 |
| Database Link: | Entrez Gene 10251 Human O43610 |
| Background: | Inhibits neurite branching, arbor length and neurite complexity (By similarity). Inhibits EGF-mediated p42/44 ERK signaling (By similarity). Negatively regulates the MAPK cascade, resulting in a reduction of extracellular matrix protein accumulation (PubMed:30878395). May function as an antagonist of fibroblast growth factor (FGF) pathways and may negatively modulate respiratory organogenesis (PubMed:9458049). |
| Synonyms: | HSPRY3; Spry-3 |



[View online »](#)

Product images:

Immunohistochemistry of paraffin-embedded Human cervical cancer tissue using [TA365040] (SPRY3 Antibody) at dilution 1/50 (Original magnification: ×200)



Immunohistochemistry of paraffin-embedded Human cervical cancer tissue using [TA365040] (SPRY3 Antibody) at dilution 1/50, treated with fusion protein. (Original magnification: ×200)