

Product datasheet for **TA365039S**

Sprouty 4 (SPRY4) Rabbit Polyclonal Antibody

Product data:

Product Type:	Primary Antibodies
Applications:	IHC, WB
Recommended Dilution:	WB: 500-2000 WB positive control: K562□A375 and 231 cell IHC: 25-100 Positive control: Human lung cancer Predicted cell location: Cytoplasm
Reactivity:	Human, Mouse
Host:	Rabbit
Isotype:	IgG
Clonality:	Polyclonal
Immunogen:	Full length fusion protein
Formulation:	pH7.4 PBS, 0.05% NaN ₃ , 40% Glycerol
Purification:	Antigen affinity purification
Conjugation:	Unconjugated
Storage:	Store at -20°C.
Stability:	1 year
Predicted Protein Size:	33 kDa
Gene Name:	sprouty RTK signaling antagonist 4
Database Link:	Entrez Gene 81848 Human Q9C004

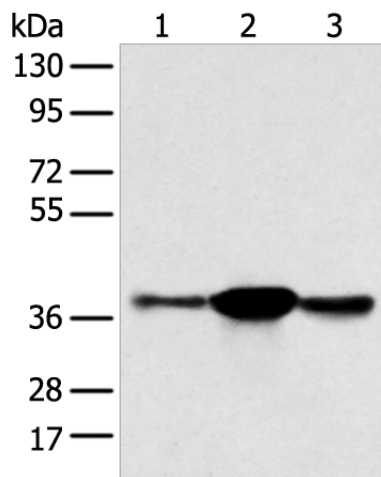
Background: This gene encodes a member of a family of cysteine- and proline-rich proteins. The encoded protein is an inhibitor of the receptor-transduced mitogen-activated protein kinase (MAPK) signaling pathway. Activity of this protein impairs the formation of active GTP-RAS. Nucleotide variation in this gene has been associated with hypogonadotropic hypogonadism 17 with or without anosmia. Alternative splicing results in a multiple transcript variants.

Synonyms: Spry-4

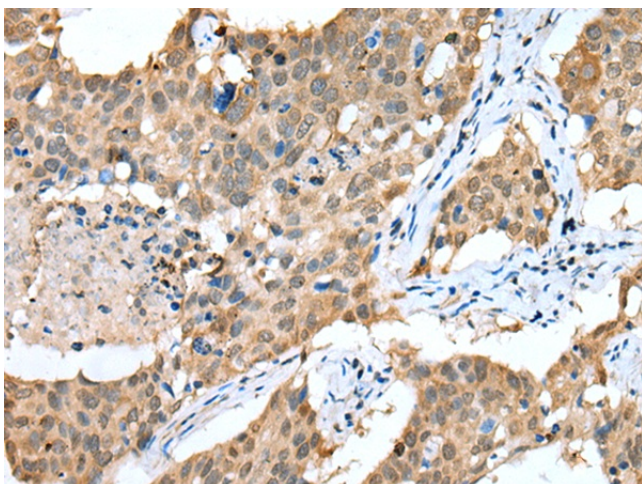


[View online »](#)

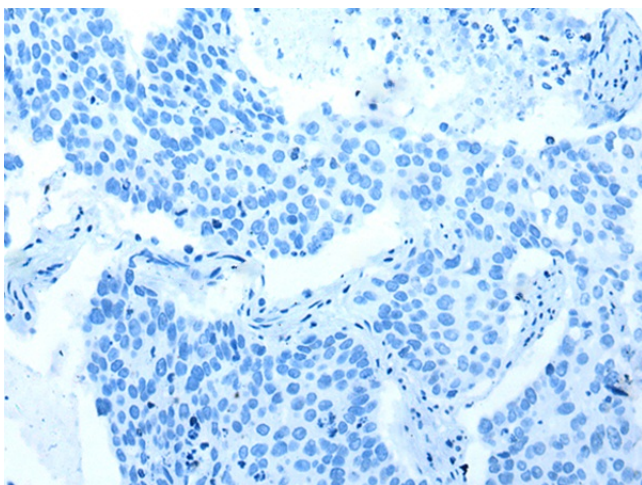
Product images:



Gel: 8%SDS-PAGE
 Lysate: 40 µg
 Lane 1-3: K562
 A375 and 231 cell
 Primary antibody: [TA365039] (SPRY4 Antibody)
 at dilution 1/400
 Secondary antibody: Goat anti rabbit IgG at
 1/8000 dilution
 Exposure time: 10 seconds



Immunohistochemistry of paraffin-embedded Human lung cancer tissue using [TA365039] (SPRY4 Antibody) at dilution 1/25 (Original magnification: ×200)



Immunohistochemistry of paraffin-embedded Human lung cancer tissue using [TA365039] (SPRY4 Antibody) at dilution 1/25, treated with fusion protein. (Original magnification: ×200)