

## Product datasheet for **TA365036S**

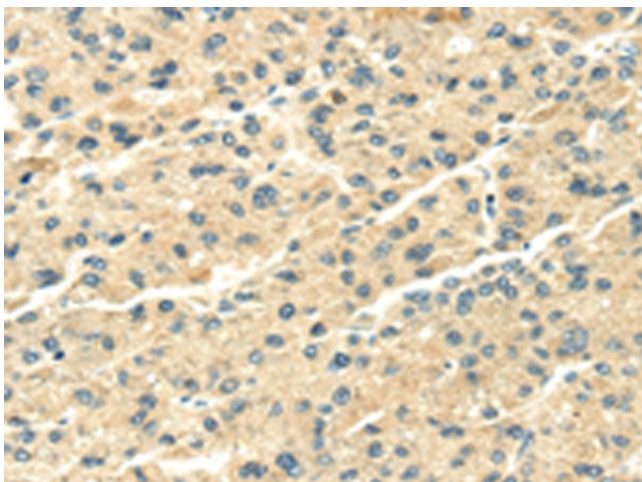
### SNX20 Rabbit Polyclonal Antibody

#### Product data:

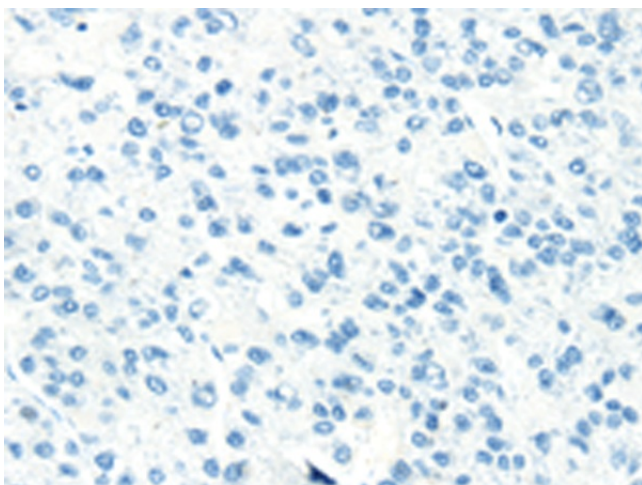
Product Type:	Primary Antibodies
Applications:	IHC
Recommended Dilution:	IHC: 25-100 Positive control: Human liver cancer Predicted cell location: Cytoplasm
Reactivity:	Human
Host:	Rabbit
Isotype:	IgG
Clonality:	Polyclonal
Immunogen:	Fusion protein of human SNX20
Formulation:	pH7.4 PBS, 0.05% NaN <sub>3</sub> , 40% Glycerol
Purification:	Antigen affinity purification
Conjugation:	Unconjugated
Storage:	Store at -20°C.
Stability:	1 year
Gene Name:	sorting nexin 20
Database Link:	<a href="#">Entrez Gene 124460 Human Q7Z614</a>
Background:	SNX20 interacts with the cytoplasmic domain of PSGL1 (SELPLG; MIM 600738) and cycles PSGL1 into endosomes.
Synonyms:	MGC35578; SLIC-1; SLIC1



[View online »](#)

**Product images:**

Immunohistochemistry of paraffin-embedded Human liver cancer tissue using [TA365036] (SNX20 Antibody) at dilution 1/20 (Original magnification: ×200)



Immunohistochemistry of paraffin-embedded Human liver cancer tissue using [TA365036] (SNX20 Antibody) at dilution 1/20, treated with fusion protein. (Original magnification: ×200)