

Product datasheet for **TA365031S**

SNF5 (SMARCB1) Rabbit Polyclonal Antibody

Product data:

| | |
|-------------------------|---|
| Product Type: | Primary Antibodies |
| Applications: | IHC, WB |
| Recommended Dilution: | WB: 500-2000 WB positive control: Hepg2, K562 and Jurkat cells IHC: 25-100 Positive control: Human breast cancer Predicted cell location: Nucleus |
| Reactivity: | Human, Mouse |
| Host: | Rabbit |
| Isotype: | IgG |
| Clonality: | Polyclonal |
| Immunogen: | Fusion protein of human SMARCB1 |
| Formulation: | pH7.4 PBS, 0.05% NaN ₃ , 40% Glycerol |
| Purification: | Antigen affinity purification |
| Conjugation: | Unconjugated |
| Storage: | Store at -20°C. |
| Stability: | 1 year |
| Predicted Protein Size: | 44 kDa |
| Gene Name: | SWI/SNF related, matrix associated, actin dependent regulator of chromatin, subfamily b, member 1 |
| Database Link: | Entrez Gene 6598 Human Q12824 |

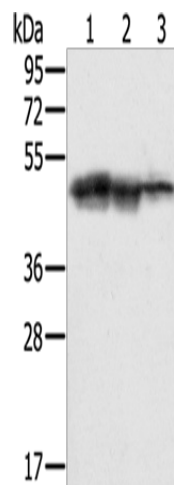
Background: The protein encoded by this gene is part of a complex that relieves repressive chromatin structures, allowing the transcriptional machinery to access its targets more effectively. The encoded nuclear protein may also bind to and enhance the DNA joining activity of HIV-1 integrase. This gene has been found to be a tumor suppressor, and mutations in it have been associated with malignant rhabdoid tumors. Two transcript variants encoding different isoforms have been found for this gene.



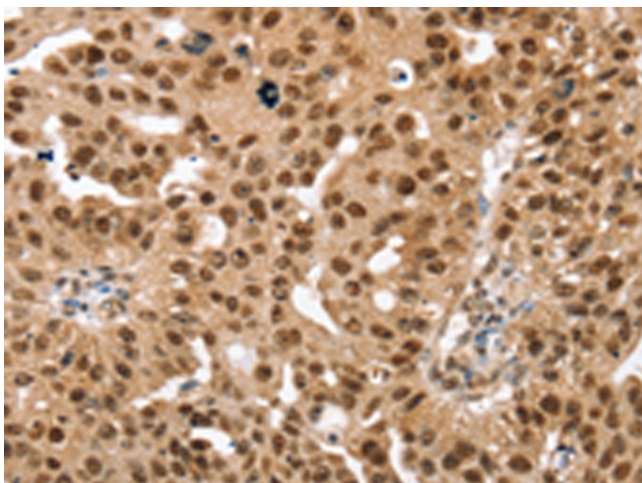
[View online »](#)

Synonyms: BAF47; hSNF5; hSNFS; Ini1; RDT; Sfh1p; SNF5; SNF5L1; Snr1

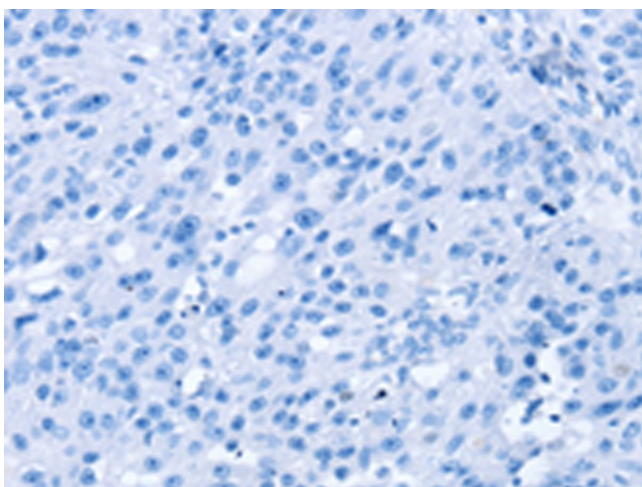
Product images:



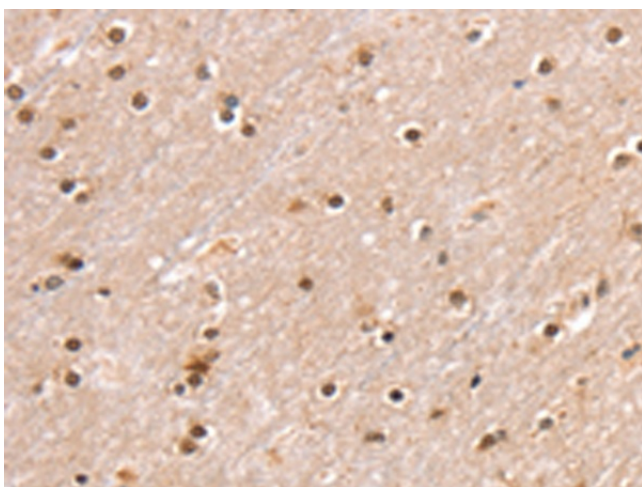
Gel: 8%SDS-PAGE
Lysate: 40 µg
Lane 1-3: Hepg2 cells
K562 cells
Jurkat cells
Primary antibody: [TA365031] (SMARCB1 Antibody) at dilution 1/400
Secondary antibody: Goat anti rabbit IgG at 1/8000 dilution
Exposure time: 10 seconds



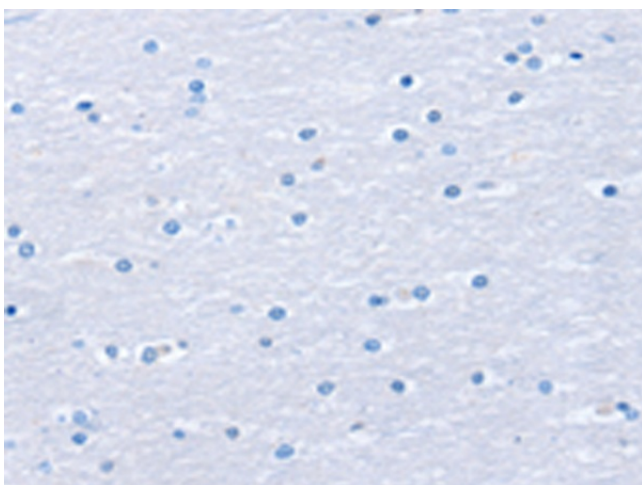
Immunohistochemistry of paraffin-embedded Human breast cancer tissue using [TA365031] (SMARCB1 Antibody) at dilution 1/30 (Original magnification: ×200)



Immunohistochemistry of paraffin-embedded Human breast cancer tissue using [TA365031] (SMARCB1 Antibody) at dilution 1/30, treated with fusion protein. (Original magnification: $\times 200$)



Immunohistochemistry of paraffin-embedded Human brain tissue using [TA365031] (SMARCB1 Antibody) at dilution 1/30 (Original magnification: $\times 200$)



Immunohistochemistry of paraffin-embedded Human brain tissue using [TA365031] (SMARCB1 Antibody) at dilution 1/30, treated with fusion protein. (Original magnification: $\times 200$)