

Product datasheet for **TA365031**

SNF5 (SMARCB1) Rabbit Polyclonal Antibody

Product data:

Product Type:	Primary Antibodies
Applications:	IHC, WB
Recommended Dilution:	WB: 500-2000 WB positive control: Hepg2, K562 and Jurkat cells IHC: 25-100 Positive control: Human breast cancer Predicted cell location: Nucleus
Reactivity:	Human, Mouse
Host:	Rabbit
Isotype:	IgG
Clonality:	Polyclonal
Immunogen:	Fusion protein of human SMARCB1
Formulation:	pH7.4 PBS, 0.05% NaN ₃ , 40% Glycerol
Concentration:	lot specific
Purification:	Antigen affinity purification
Conjugation:	Unconjugated
Storage:	Store at -20°C.
Stability:	1 year
Predicted Protein Size:	44 kDa
Gene Name:	SWI/SNF related, matrix associated, actin dependent regulator of chromatin, subfamily b, member 1
Database Link:	Entrez Gene 6598 Human Q12824



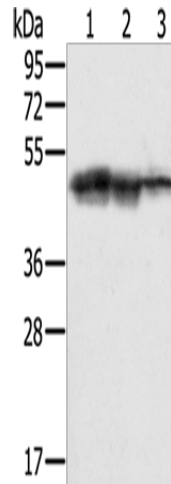
[View online »](#)

Background:

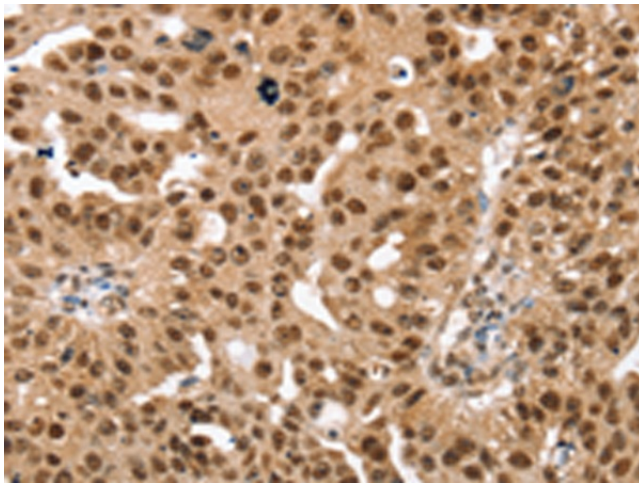
The protein encoded by this gene is part of a complex that relieves repressive chromatin structures, allowing the transcriptional machinery to access its targets more effectively. The encoded nuclear protein may also bind to and enhance the DNA joining activity of HIV-1 integrase. This gene has been found to be a tumor suppressor, and mutations in it have been associated with malignant rhabdoid tumors. Two transcript variants encoding different isoforms have been found for this gene.

Synonyms:

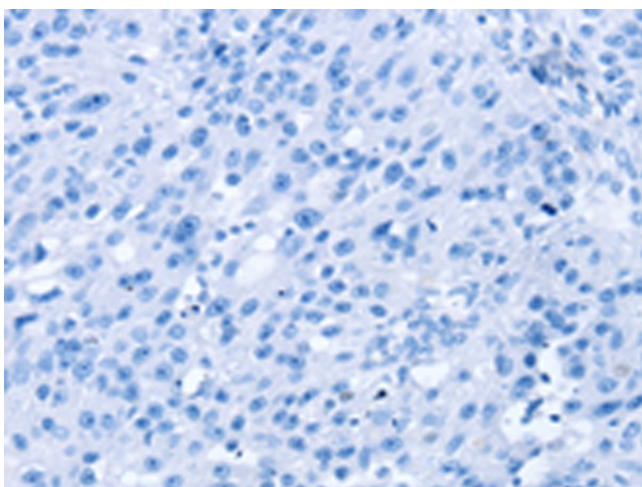
BAF47; hSNF5; hSNFS; Ini1; RDT; Sfh1p; SNF5; SNF5L1; Snr1

Product images:


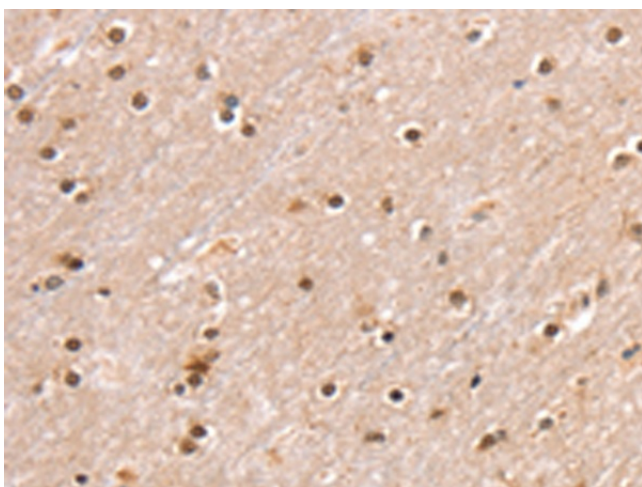
Gel: 8%SDS-PAGE
 Lysate: 40 µg
 Lane 1-3: Hepg2 cells
 K562 cells
 Jurkat cells
 Primary antibody: TA365031 (SMARCB1 Antibody)
 at dilution 1/400
 Secondary antibody: Goat anti rabbit IgG at
 1/8000 dilution
 Exposure time: 10 seconds



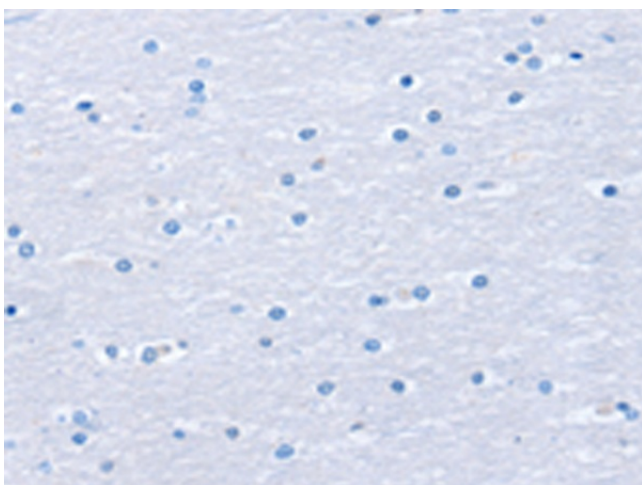
Immunohistochemistry of paraffin-embedded
 Human breast cancer tissue using TA365031
 (SMARCB1 Antibody) at dilution 1/30 (Original
 magnification: ×200)



Immunohistochemistry of paraffin-embedded Human breast cancer tissue using TA365031 (SMARCB1 Antibody) at dilution 1/30, treated with fusion protein. (Original magnification: ×200)



Immunohistochemistry of paraffin-embedded Human brain tissue using TA365031 (SMARCB1 Antibody) at dilution 1/30 (Original magnification: ×200)



Immunohistochemistry of paraffin-embedded Human brain tissue using TA365031 (SMARCB1 Antibody) at dilution 1/30, treated with fusion protein. (Original magnification: ×200)