

## Product datasheet for **TA365024S**

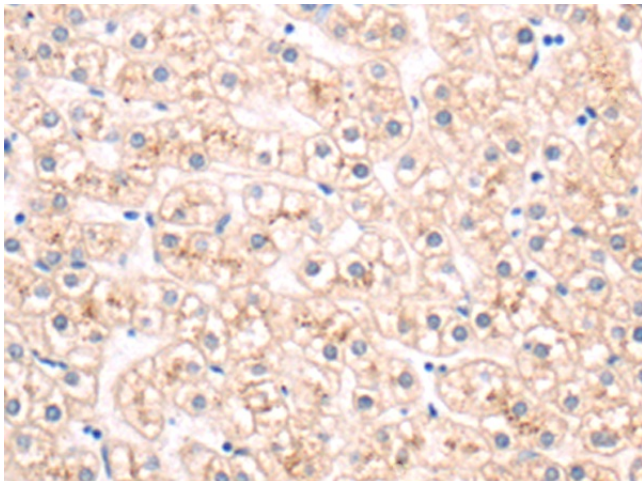
### SLITRK6 Rabbit Polyclonal Antibody

#### Product data:

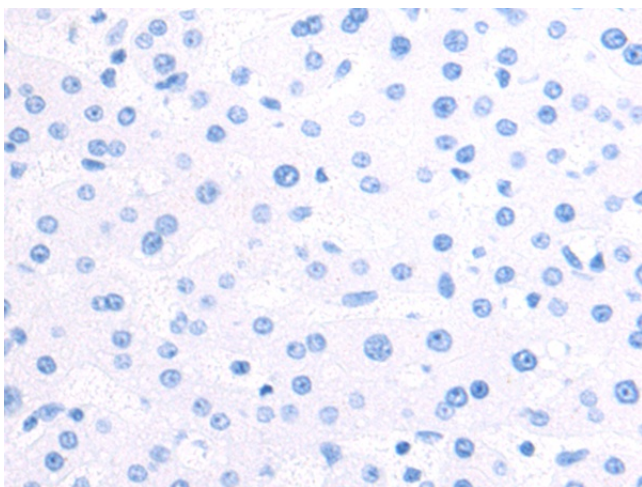
Product Type:	Primary Antibodies
Applications:	IHC
Recommended Dilution:	IHC: 50-200 Positive control: Human liver cancer Predicted cell location: Cytoplasm and Cell membrane
Reactivity:	Human, Mouse
Host:	Rabbit
Isotype:	IgG
Clonality:	Polyclonal
Immunogen:	Fusion protein of human SLITRK6
Formulation:	pH7.4 PBS, 0.05% NaN <sub>3</sub> , 40% Glycerol
Purification:	Antigen affinity purification
Conjugation:	Unconjugated
Storage:	Store at -20°C.
Stability:	1 year
Gene Name:	SLIT and NTRK like family member 6
Database Link:	<a href="#">Entrez Gene 84189 Human Q9H5Y7</a>
Background:	This gene encodes a member of the SLITRK protein family. Members of this family are integral membrane proteins that are characterized by two N-terminal leucine-rich repeat (LRR) domains and a C-terminal region that shares homology with trk neurotrophin receptors. This protein functions as a regulator of neurite outgrowth required for normal hearing and vision. Mutations in this gene are a cause of myopia and deafness.
Synonyms:	4832410J21Rik; FLJ22774; MGC119595; MGC119596; MGC119597



[View online »](#)

**Product images:**

Immunohistochemistry of paraffin-embedded Human liver cancer tissue using [TA365024] (SLITRK6 Antibody) at dilution 1/70 (Original magnification:  $\times 200$ )



Immunohistochemistry of paraffin-embedded Human liver cancer tissue using [TA365024] (SLITRK6 Antibody) at dilution 1/70, treated with fusion protein. (Original magnification:  $\times 200$ )