

Product datasheet for **TA365019**

SLC27A4 Rabbit Polyclonal Antibody

Product data:

| | |
|-------------------------|--|
| Product Type: | Primary Antibodies |
| Applications: | IHC, WB |
| Recommended Dilution: | WB: 200-1000 WB positive control: HEPG2□Hela and PC-3 cell lysates IHC: 25-100 Positive control: Human thyroid cancer Predicted cell location: Cytoplasm |
| Reactivity: | Human, Mouse |
| Host: | Rabbit |
| Isotype: | IgG |
| Clonality: | Polyclonal |
| Immunogen: | Fusion protein of human SLC27A4 |
| Formulation: | pH7.4 PBS, 0.05% NaN ₃ , 40% Glycerol |
| Concentration: | lot specific |
| Purification: | Antigen affinity purification |
| Conjugation: | Unconjugated |
| Storage: | Store at -20°C. |
| Stability: | 1 year |
| Predicted Protein Size: | 72 kDa |
| Gene Name: | solute carrier family 27 member 4 |
| Database Link: | Entrez Gene 10999 Human Q6P1M0 |

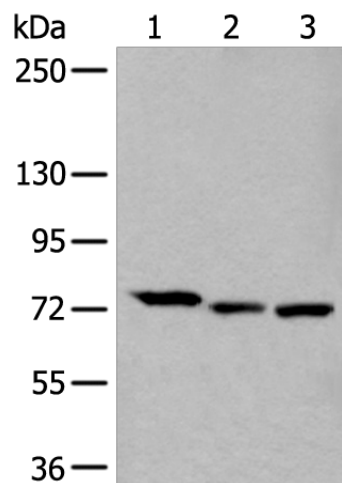
Background: This gene encodes a member of a family of fatty acid transport proteins, which are involved in translocation of long-chain fatty acids cross the plasma membrane. This protein is expressed at high levels on the apical side of mature enterocytes in the small intestine, and appears to be the principal fatty acid transporter in enterocytes. Clinical studies suggest this gene as a candidate gene for the insulin resistance syndrome. Mutations in this gene have been associated with ichthyosis prematurity syndrome.



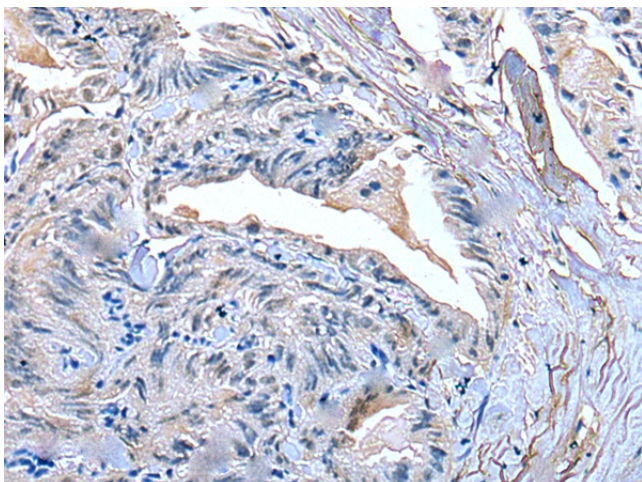
[View online »](#)

Synonyms: ACSVL4; FATP-4; FATP4; IPS

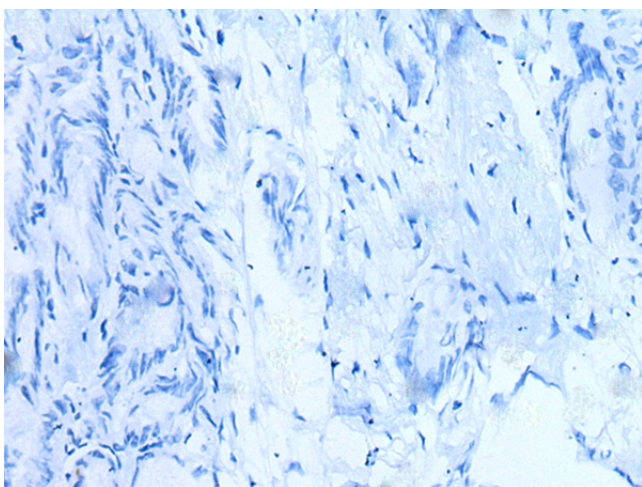
Product images:



Gel: 6%SDS-PAGE
Lysate: 40 μ g
Lane 1-3: HEPG2
HeLa and PC-3 cell lysates
Primary antibody: TA365019 (SLC27A4 Antibody)
at dilution 1/250
Secondary antibody: Goat anti rabbit IgG at
1/8000 dilution
Exposure time: 1 minute



Immunohistochemistry of paraffin-embedded
Human thyroid cancer tissue using TA365019
(SLC27A4 Antibody) at dilution 1/30 (Original
magnification: $\times 200$)



Immunohistochemistry of paraffin-embedded Human thyroid cancer tissue using TA365019 (SLC27A4 Antibody) at dilution 1/30, treated with fusion protein. (Original magnification: ×200)