

Product datasheet for **TA365016**

SRP14 Rabbit Polyclonal Antibody

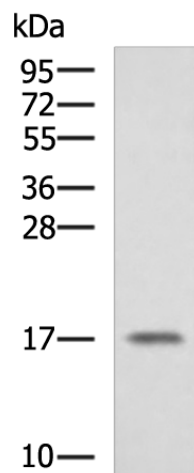
Product data:

Product Type:	Primary Antibodies
Applications:	WB
Recommended Dilution:	WB: 500-2000 WB positive control: A375 cell lysate
Reactivity:	Human
Host:	Rabbit
Isotype:	IgG
Clonality:	Polyclonal
Immunogen:	Fusion protein of human SRP14
Formulation:	pH7.4 PBS, 0.05% NaN ₃ , 40% Glycerol
Concentration:	lot specific
Purification:	Antigen affinity purification
Conjugation:	Unconjugated
Storage:	Store at -20°C.
Stability:	1 year
Predicted Protein Size:	15 kDa
Gene Name:	signal recognition particle 14kDa
Database Link:	Entrez Gene 6727 Human P37108
Background:	Signal-recognition-particle assembly has a crucial role in targeting secretory proteins to the rough endoplasmic reticulum membrane. SRP9 together with SRP14 and the Alu portion of the SRP RNA, constitutes the elongation arrest domain of SRP. The complex of SRP9 and SRP14 is required for SRP RNA binding.
Synonyms:	ALURBP; MGC14326



[View online »](#)

Product images:



Gel: 12%SDS-PAGE
Lysate: 40 μ g
Lane: A375 cell lysate
Primary antibody: TA365016 (SRP14 Antibody) at dilution 1/1350
Secondary antibody: Goat anti rabbit IgG at 1/5000 dilution
Exposure time: 1 minute