

Product datasheet for TA365015S

SIAH1 Rabbit Polyclonal Antibody

Product data:

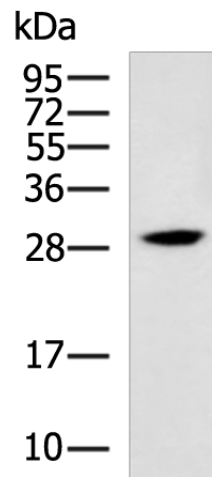
| | |
|--------------------------------|--|
| Product Type: | Primary Antibodies |
| Applications: | IHC, WB |
| Recommended Dilution: | WB: 500-2000 WB positive control: Mouse kidney tissue lysate IHC: 250-500 Positive control: Human colorectal cancer Predicted cell location: Cytoplasm and Nucleus |
| Reactivity: | Human, Mouse, Rat |
| Host: | Rabbit |
| Isotype: | IgG |
| Clonality: | Polyclonal |
| Immunogen: | Fusion protein of human SIAH1 |
| Formulation: | pH7.4 PBS, 0.05% NaN ₃ , 40% Glycerol |
| Purification: | Antigen affinity purification |
| Conjugation: | Unconjugated |
| Storage: | Store at -20°C. |
| Stability: | 1 year |
| Predicted Protein Size: | 31 kDa |
| Gene Name: | siah E3 ubiquitin protein ligase 1 |
| Database Link: | Entrez Gene 6477 Human Q8IUQ4 |
| Background: | This gene encodes a protein that is a member of the seven in absentia homolog (SIAH) family. The protein is an E3 ligase and is involved in ubiquitination and proteasome-mediated degradation of specific proteins. The activity of this ubiquitin ligase has been implicated in the development of certain forms of Parkinson's disease, the regulation of the cellular response to hypoxia and induction of apoptosis. Alternative splicing results in several additional transcript variants, some encoding different isoforms and others that have not been fully characterized. [provided by RefSeq, Jul 2008] |



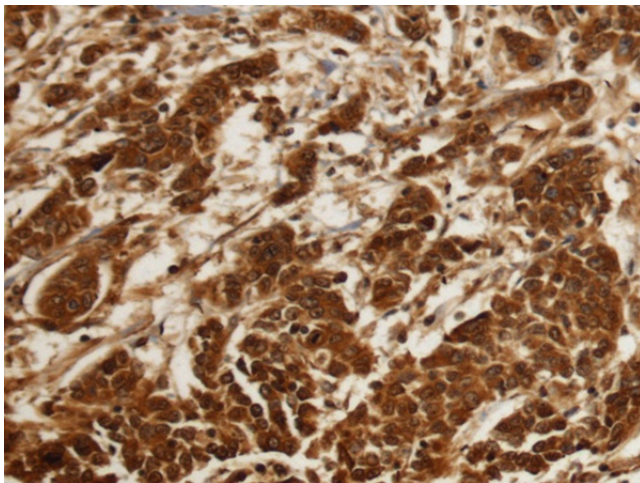
View online »

Synonyms: FLJ08065; hSIAH1; HUMSIAH; Siah-1; Siah-1a; SIAH1A

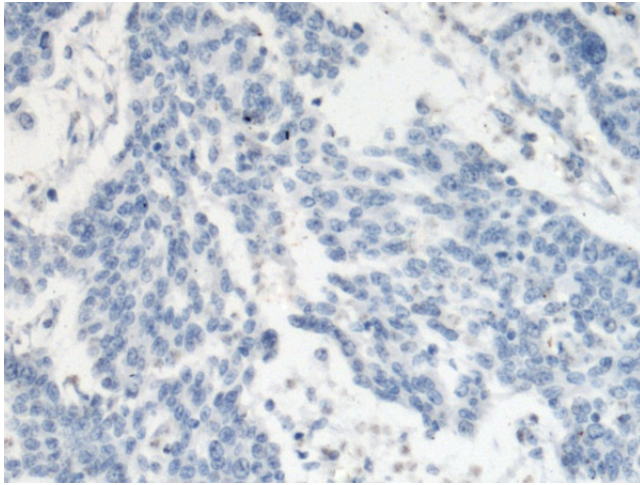
Product images:



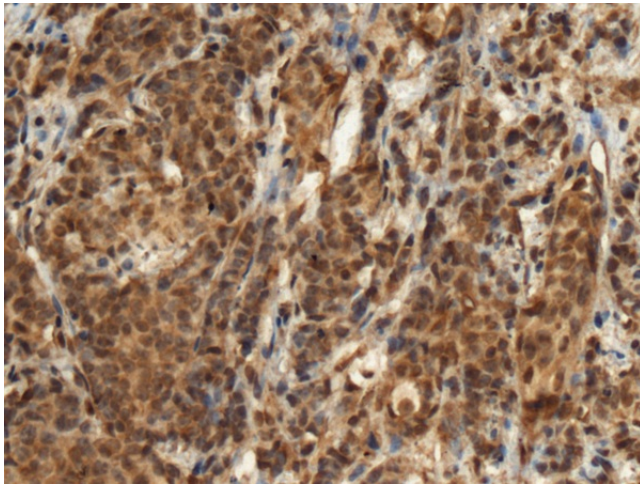
Gel: 12%SDS-PAGE
Lysate: 40 μ g
Lane: Mouse kidney tissue lysate
Primary antibody: [TA365015] (SIAH1 Antibody) at dilution 1/800
Secondary antibody: Goat anti rabbit IgG at 1/5000 dilution
Exposure time: 20 seconds



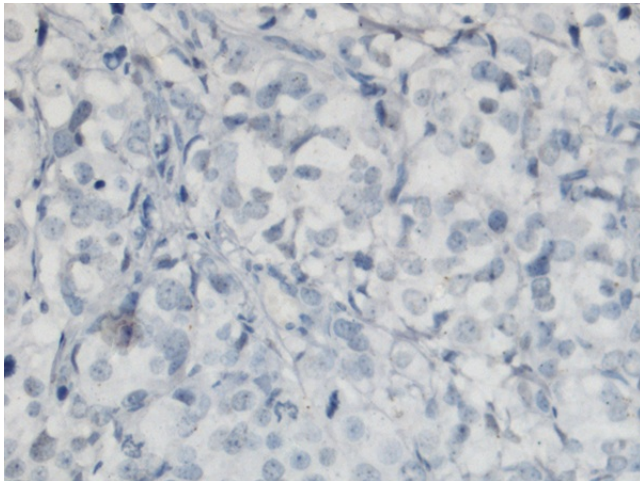
Immunohistochemistry of paraffin-embedded Human colorectal cancer tissue using [TA365015] (SIAH1 Antibody) at dilution 1/240 (Original magnification: \times 200)



Immunohistochemistry of paraffin-embedded Human colorectal cancer tissue using [TA365015] (SIAH1 Antibody) at dilution 1/240, treated with fusion protein. (Original magnification: $\times 200$)



Immunohistochemistry of paraffin-embedded Human prostate cancer tissue using [TA365015] (SIAH1 Antibody) at dilution 1/240 (Original magnification: $\times 200$)



Immunohistochemistry of paraffin-embedded Human prostate cancer tissue using [TA365015] (SIAH1 Antibody) at dilution 1/240, treated with fusion protein. (Original magnification: $\times 200$)