

Product datasheet for **TA365014**

SHIP (INPP5D) Rabbit Polyclonal Antibody

Product data:

Product Type:	Primary Antibodies
Applications:	IHC, WB
Recommended Dilution:	WB: 500-2000 WB positive control: Ramos cell lysate IHC: 100-300 Positive control: Human tonsil Predicted cell location: Cytoplasm
Reactivity:	Human
Host:	Rabbit
Isotype:	IgG
Clonality:	Polyclonal
Immunogen:	Fusion protein of human INPP5D
Formulation:	pH7.4 PBS, 0.05% NaN ₃ , 40% Glycerol
Concentration:	lot specific
Purification:	Antigen affinity purification
Conjugation:	Unconjugated
Storage:	Store at -20°C.
Stability:	1 year
Predicted Protein Size:	133 kDa
Gene Name:	inositol polyphosphate-5-phosphatase D
Database Link:	Entrez Gene 3635 Human Q92835



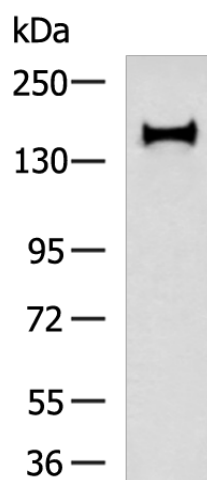
[View online »](#)

Background:

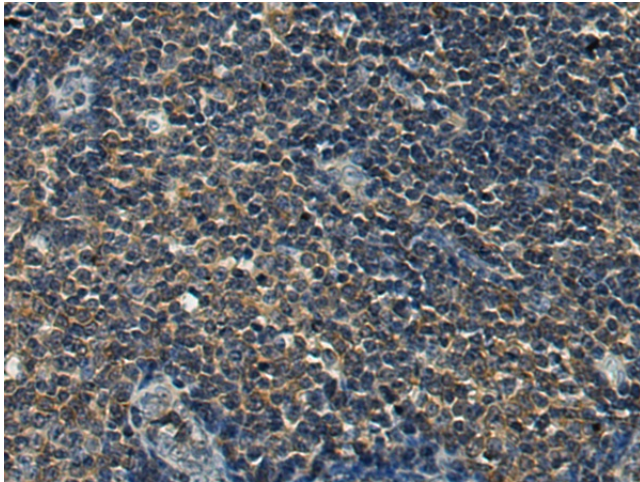
This gene is a member of the inositol polyphosphate-5-phosphatase (INPP5) family and encodes a protein with an N-terminal SH2 domain, an inositol phosphatase domain, and two C-terminal protein interaction domains. Expression of this protein is restricted to hematopoietic cells where its movement from the cytosol to the plasma membrane is mediated by tyrosine phosphorylation. At the plasma membrane, the protein hydrolyzes the 5' phosphate from phosphatidylinositol (3,4,5)-trisphosphate and inositol-1,3,4,5-tetrakisphosphate, thereby affecting multiple signaling pathways. The protein is also partly localized to the nucleus, where it may be involved in nuclear inositol phosphate signaling processes. Overall, the protein functions as a negative regulator of myeloid cell proliferation and survival. Mutations in this gene are associated with defects and cancers of the immune system. Alternative splicing of this gene results in multiple transcript variants.

Synonyms:

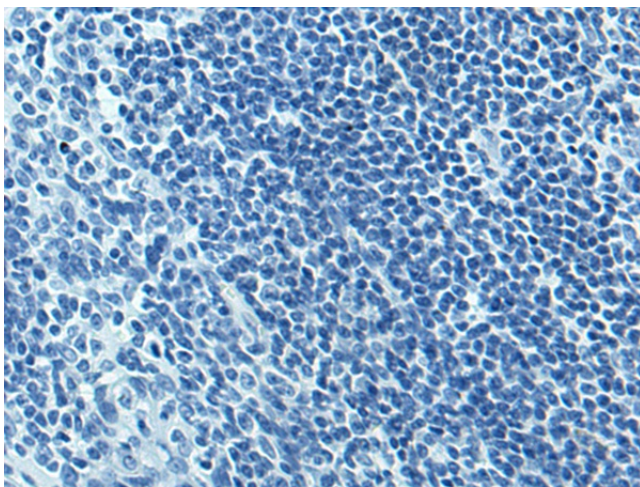
hp51CN; MGC104855; MGC142140; MGC142142; p150Ship; SHIP; SHIP-1; SHIP1; SIP-145

Product images:

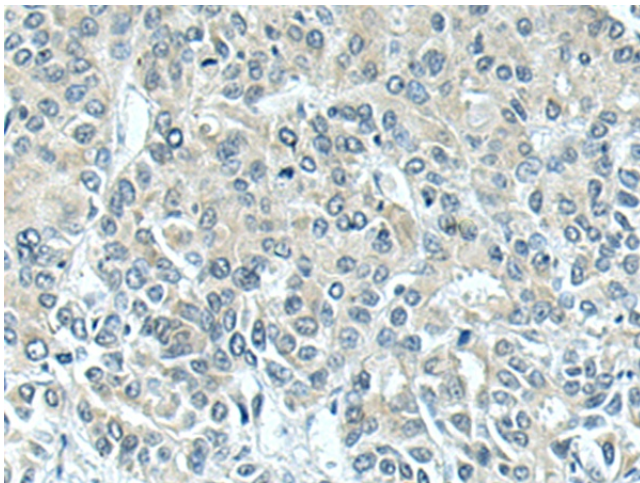
Gel: 6%SDS-PAGE
Lysate: 40 µg
Lane: Ramos cell lysate
Primary antibody: TA365014 (INPP5D Antibody) at dilution 1/800
Secondary antibody: Goat anti rabbit IgG at 1/5000 dilution
Exposure time: 15 seconds



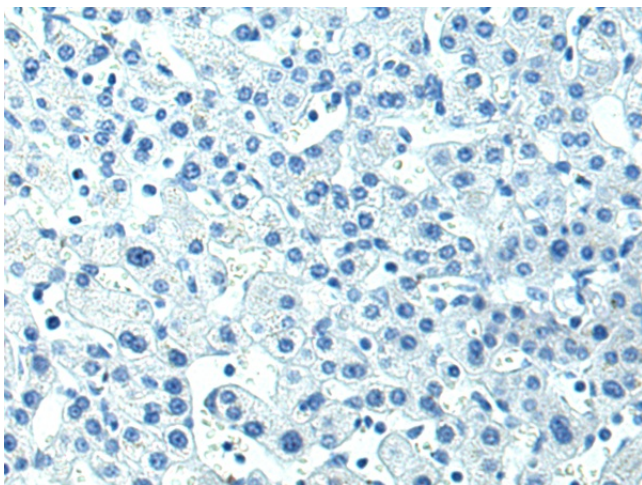
Immunohistochemistry of paraffin-embedded Human tonsil tissue using TA365014 (INPP5D Antibody) at dilution 1/150 (Original magnification: $\times 200$)



Immunohistochemistry of paraffin-embedded Human tonsil tissue using TA365014 (INPP5D Antibody) at dilution 1/150, treated with fusion protein. (Original magnification: $\times 200$)



Immunohistochemistry of paraffin-embedded Human liver cancer tissue using TA365014 (INPP5D Antibody) at dilution 1/150 (Original magnification: $\times 200$)



Immunohistochemistry of paraffin-embedded Human liver cancer tissue using TA365014 (INPP5D Antibody) at dilution 1/150, treated with fusion protein. (Original magnification: ×200)