

Product datasheet for **TA365013**

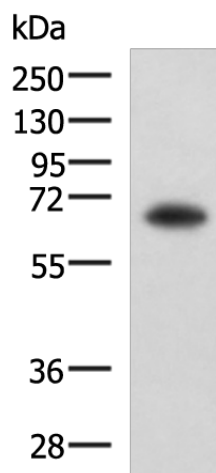
SHC3 Rabbit Polyclonal Antibody

Product data:

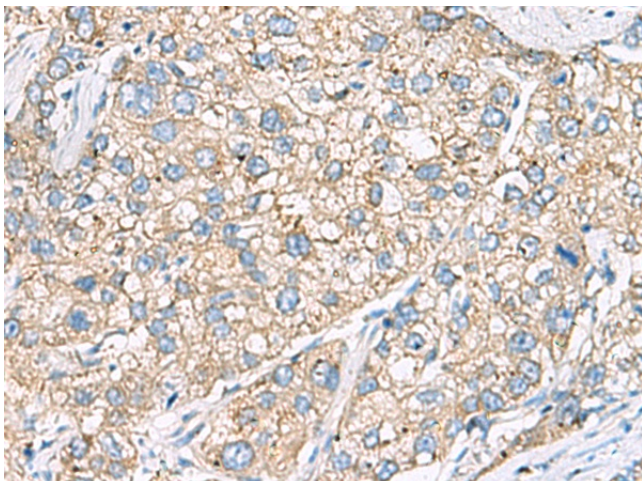
Product Type:	Primary Antibodies
Applications:	IHC, WB
Recommended Dilution:	WB: 500-2000 WB positive control: PC3 cell lysate IHC: 50-100 Positive control: Human liver cancer Predicted cell location: Cytoplasm
Reactivity:	Human, Mouse, Rat
Host:	Rabbit
Isotype:	IgG
Clonality:	Polyclonal
Immunogen:	Fusion protein of human SHC3
Formulation:	pH7.4 PBS, 0.05% NaN ₃ , 40% Glycerol
Concentration:	lot specific
Purification:	Antigen affinity purification
Conjugation:	Unconjugated
Storage:	Store at -20°C.
Stability:	1 year
Predicted Protein Size:	64 kDa
Gene Name:	SHC adaptor protein 3
Database Link:	Entrez Gene 53358 Human Q92529
Background:	Signaling adapter that couples activated growth factor receptors to signaling pathway in neurons. Involved in the signal transduction pathways of neurotrophin-activated Trk receptors in cortical neurons.
Synonyms:	N-Shc; NSHC; RAI; SHCC



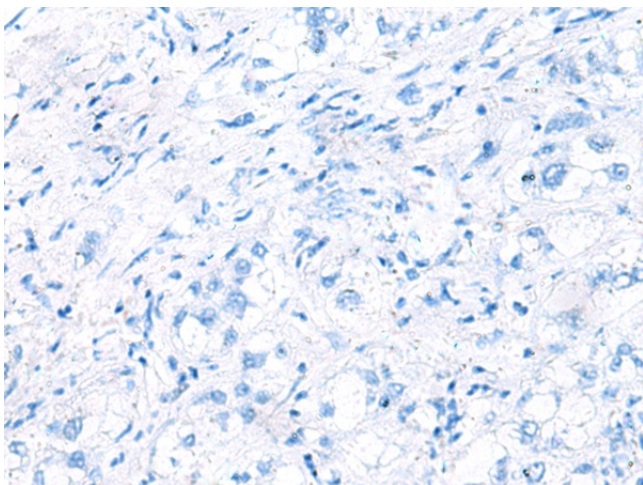
[View online »](#)

Product images:

Gel: 8%SDS-PAGE
Lysate: 40 μ g
Lane: PC3 cell lysate
Primary antibody: TA365013 (SHC3 Antibody) at dilution 1/650
Secondary antibody: Goat anti rabbit IgG at 1/5000 dilution
Exposure time: 3 minutes



Immunohistochemistry of paraffin-embedded Human liver cancer tissue using TA365013 (SHC3 Antibody) at dilution 1/40 (Original magnification: \times 200)



Immunohistochemistry of paraffin-embedded Human liver cancer tissue using TA365013 (SHC3 Antibody) at dilution 1/40, treated with fusion protein. (Original magnification: $\times 200$)