

Product datasheet for **TA365012S**

SERPINB6 Rabbit Polyclonal Antibody

Product data:

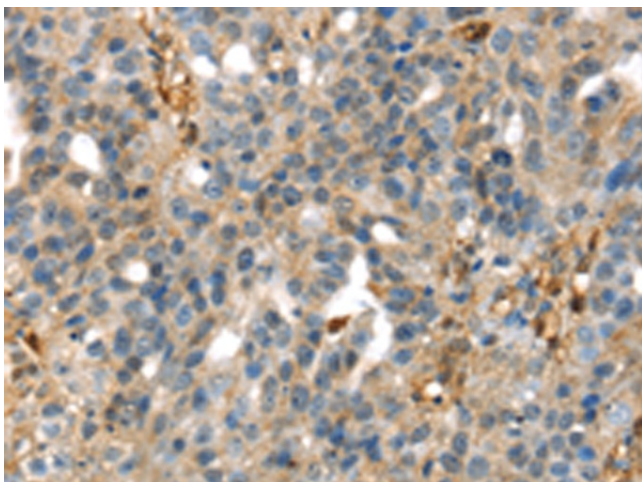
Product Type:	Primary Antibodies
Applications:	IHC
Recommended Dilution:	IHC: 25-100 Positive control: Human breast cancer Predicted cell location: Cytoplasm
Reactivity:	Human
Host:	Rabbit
Isotype:	IgG
Clonality:	Polyclonal
Immunogen:	Fusion protein of human SERPINB6
Formulation:	pH7.4 PBS, 0.05% NaN ₃ , 40% Glycerol
Purification:	Antigen affinity purification
Conjugation:	Unconjugated
Storage:	Store at -20°C.
Stability:	1 year
Gene Name:	serpin family B member 6
Database Link:	Entrez Gene 5269 Human P35237

Background: The protein encoded by this gene is a member of the serpin (serine proteinase inhibitor) superfamily, and ovalbumin(ov)-serpin subfamily. It was originally discovered as a placental thrombin inhibitor. The mouse homolog was found to be expressed in the hair cells of the inner ear. Mutations in this gene are associated with nonsyndromic progressive hearing loss, suggesting that this serpin plays an important role in the inner ear in the protection against leakage of lysosomal content during stress, and that loss of this protection results in cell death and sensorineural hearing loss. Alternatively spliced transcript variants have been found for this gene.

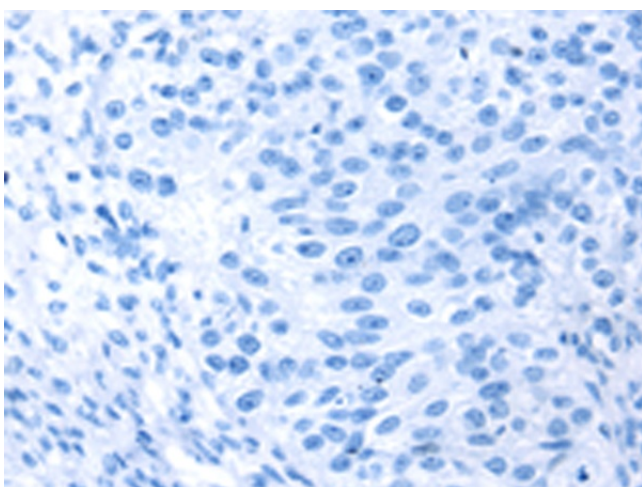
Synonyms: CAP; DKFZp686i04222; MGC111370; MSTP057; OTTHUMP00000017778; OTTHUMP00000017779; OTTHUMP00000017781; OTTHUMP00000017782; PI-6; PI6; PTI; SPI3



[View online »](#)

Product images:

Immunohistochemistry of paraffin-embedded Human breast cancer tissue using [TA365012] (SERPINB6 Antibody) at dilution 1/35 (Original magnification: $\times 200$)



Immunohistochemistry of paraffin-embedded Human breast cancer tissue using [TA365012] (SERPINB6 Antibody) at dilution 1/35, treated with fusion protein. (Original magnification: $\times 200$)