

Product datasheet for **TA365004**

Seladin 1 (DHCR24) Rabbit Polyclonal Antibody

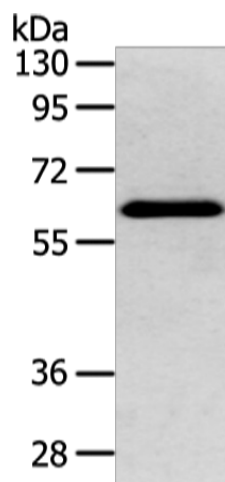
Product data:

Product Type:	Primary Antibodies
Applications:	IHC, WB
Recommended Dilution:	WB: 500-2000 WB positive control: Mouse brain tissue IHC: 25-100 Positive control: Human breast cancer Predicted cell location: Cytoplasm
Reactivity:	Human, Mouse, Rat
Host:	Rabbit
Isotype:	IgG
Clonality:	Polyclonal
Immunogen:	Fusion protein of human DHCR24
Formulation:	pH7.4 PBS, 0.05% NaN ₃ , 40% Glycerol
Concentration:	lot specific
Purification:	Antigen affinity purification
Conjugation:	Unconjugated
Storage:	Store at -20°C.
Stability:	1 year
Predicted Protein Size:	60 kDa
Gene Name:	24-dehydrocholesterol reductase
Database Link:	Entrez Gene 1718 Human Q15392
Background:	This gene encodes a flavin adenine dinucleotide (FAD)-dependent oxidoreductase which catalyzes the reduction of the delta-24 double bond of sterol intermediates during cholesterol biosynthesis. The protein contains a leader sequence that directs it to the endoplasmic reticulum membrane. Missense mutations in this gene have been associated with desmosterolosis.
Synonyms:	KIAA0018; Nbla03646; seladin-1; SELADIN1

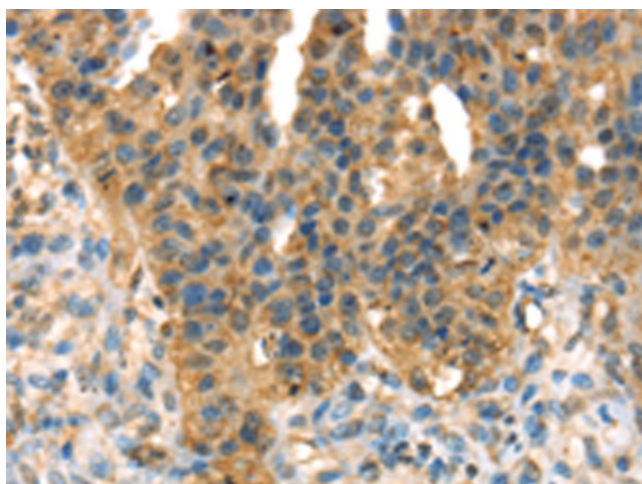


[View online »](#)

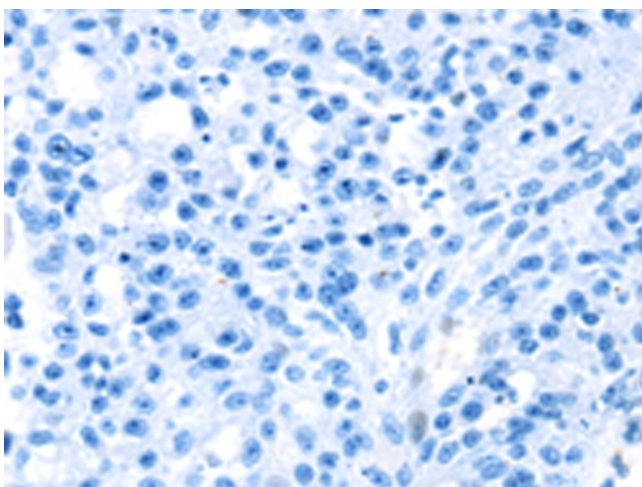
Product images:



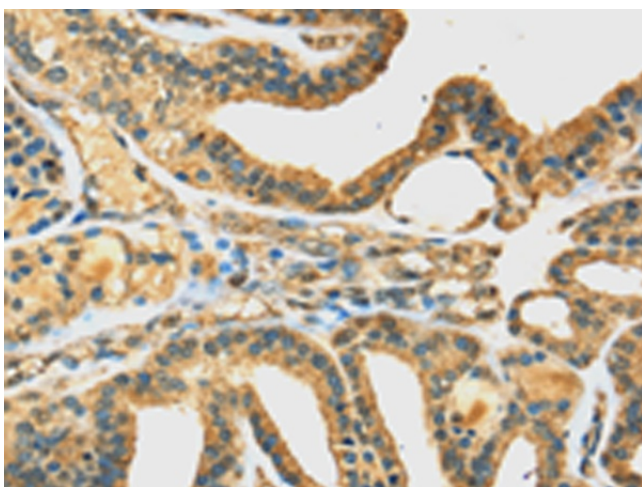
Gel: 8%SDS-PAGE
Lysate: 80 μ g
Lane: Mouse brain tissue
Primary antibody: TA365004 (DHCR24 Antibody) at dilution 1/400
Secondary antibody: Goat anti rabbit IgG at 1/8000 dilution
Exposure time: 5 seconds



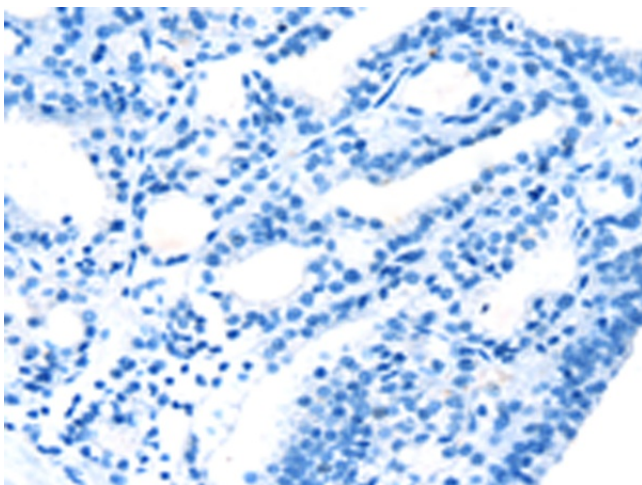
Immunohistochemistry of paraffin-embedded Human breast cancer tissue using TA365004 (DHCR24 Antibody) at dilution 1/35 (Original magnification: \times 200)



Immunohistochemistry of paraffin-embedded Human breast cancer tissue using TA365004 (DHCR24 Antibody) at dilution 1/35, treated with fusion protein. (Original magnification: $\times 200$)



Immunohistochemistry of paraffin-embedded Human thyroid cancer tissue using TA365004 (DHCR24 Antibody) at dilution 1/35 (Original magnification: $\times 200$)



Immunohistochemistry of paraffin-embedded Human thyroid cancer tissue using TA365004 (DHCR24 Antibody) at dilution 1/35, treated with fusion protein. (Original magnification: $\times 200$)