

Product datasheet for **TA365003**

SERTAD3 Rabbit Polyclonal Antibody

Product data:

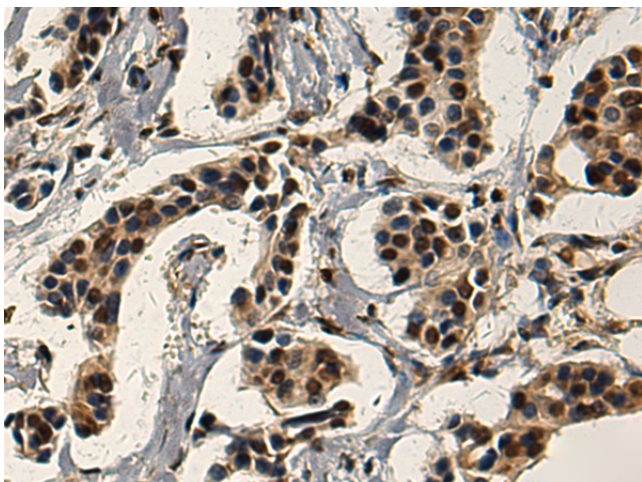
Product Type:	Primary Antibodies
Applications:	IHC
Recommended Dilution:	IHC: 200-400 Positive control: Human breast cancer Predicted cell location: Nucleus
Reactivity:	Human, Mouse
Host:	Rabbit
Isotype:	IgG
Clonality:	Polyclonal
Immunogen:	Fusion protein of human SERTAD3
Formulation:	pH7.4 PBS, 0.05% NaN ₃ , 40% Glycerol
Concentration:	lot specific
Purification:	Antigen affinity purification
Conjugation:	Unconjugated
Storage:	Store at -20°C.
Stability:	1 year
Gene Name:	SERTA domain containing 3
Database Link:	Entrez Gene 29946 Human Q9UJW9

Background: The protein encoded by this gene was identified in a yeast two-hybrid assay employing the second subunit of human replication protein A as bait. It is localized to the nucleus and its expression is significantly higher in cancer cell lines compared to normal cell lines. This protein has also been shown to be a strong transcriptional co-activator. Alternative splicing has been observed at this locus and two variants, both encoding the same protein, have been identified.

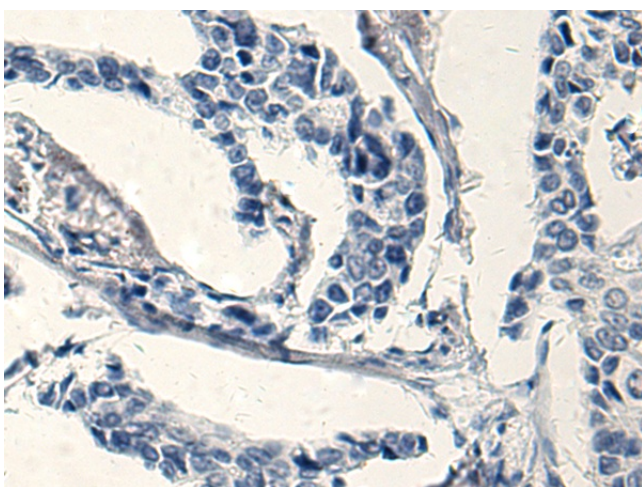
Synonyms: RBT1



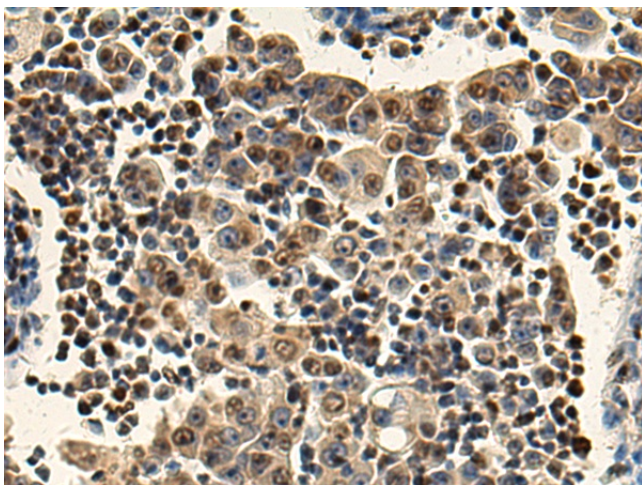
[View online »](#)

Product images:

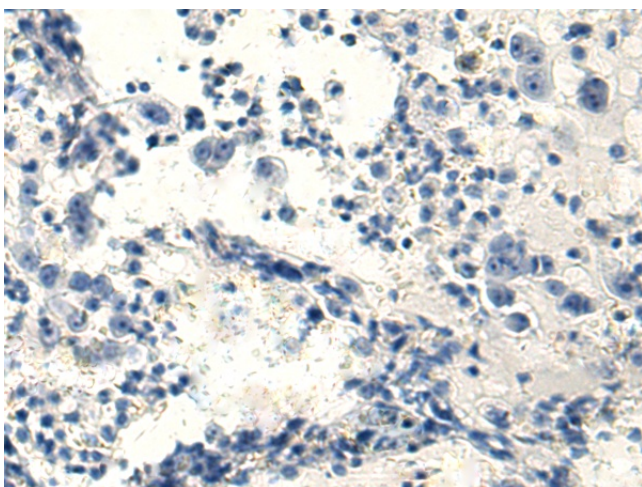
Immunohistochemistry of paraffin-embedded Human breast cancer tissue using TA365003 (SERTAD3 Antibody) at dilution 1/220 (Original magnification: $\times 200$)



Immunohistochemistry of paraffin-embedded Human breast cancer tissue using TA365003 (SERTAD3 Antibody) at dilution 1/220, treated with fusion protein. (Original magnification: $\times 200$)



Immunohistochemistry of paraffin-embedded Human lung cancer tissue using TA365003 (SERTAD3 Antibody) at dilution 1/220 (Original magnification: $\times 200$)



Immunohistochemistry of paraffin-embedded Human lung cancer tissue using TA365003 (SERTAD3 Antibody) at dilution 1/220, treated with fusion protein. (Original magnification: $\times 200$)