

## Product datasheet for **TA364996S**

### **SAMD3 Rabbit Polyclonal Antibody**

#### **Product data:**

**Product Type:** Primary Antibodies  
**Applications:** IHC  
**Recommended Dilution:** IHC: 25-100  
 Positive control: Human breast cancer  
 Predicted cell location: Cytoplasm or Nucleus

**Reactivity:** Human

**Host:** Rabbit

**Isotype:** IgG

**Clonality:** Polyclonal

**Immunogen:** Fusion protein of human SAMD3

**Formulation:** pH7.4 PBS, 0.05% NaN<sub>3</sub>, 40% Glycerol

**Purification:** Antigen affinity purification

**Conjugation:** Unconjugated

**Storage:** Store at -20°C.

**Stability:** 1 year

**Gene Name:** sterile alpha motif domain containing 3

**Database Link:** [Entrez Gene 154075 Human Q8N6K7](#)

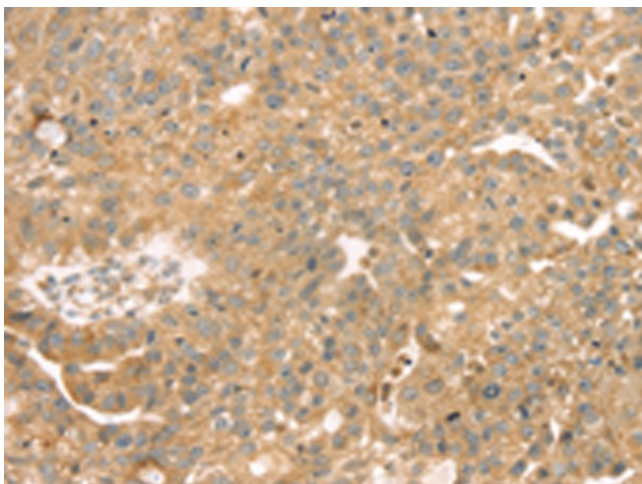
**Background:** The sterile alpha motif (SAM) domain is a 70 residue structure found in a large number of proteins involved in diverse processes present throughout the eukaryotes. The SAM domain is known to bind RNA and is arranged in a small five-helix bundle with two large interfaces. There are three isoforms of SAMD3 produced by alternative splicing. The isoform 1 has been chosen as the canonical sequence. All positional information in this entry refers to it. The sequence of isoform 2 differs from the canonical sequence as follows: 219-221: FLW → AGV 222-520: Missing. And the sequence of isoform 3 differs from the canonical sequence as follows: 1-1: M → MRSSKLQSPSPSQEKQGVYLQETAM.

**Synonyms:** bA73O6.2; FLJ34032; FLJ34563; MGC35163

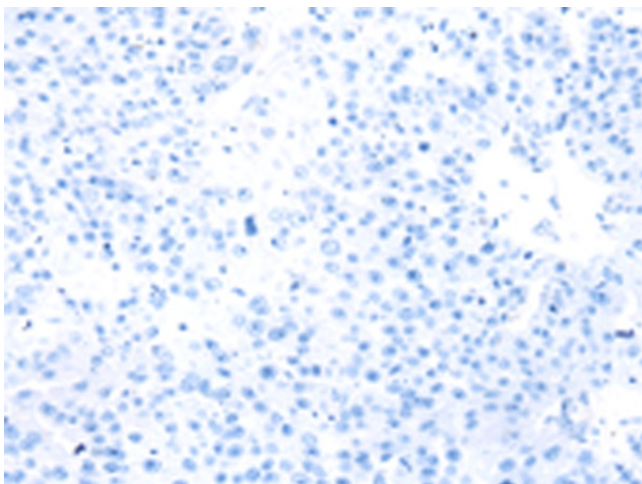


[View online »](#)

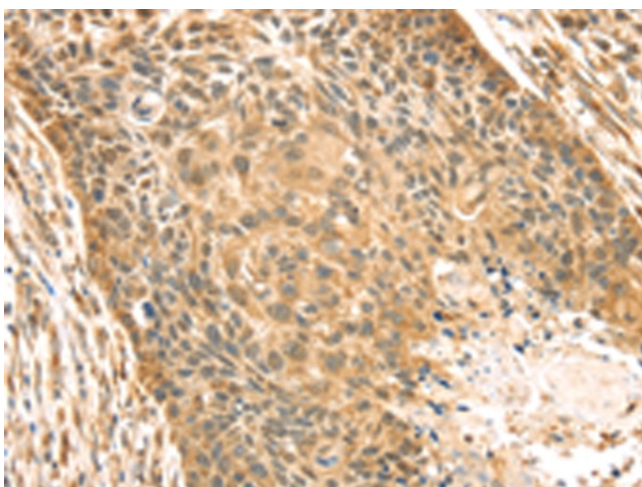
## Product images:



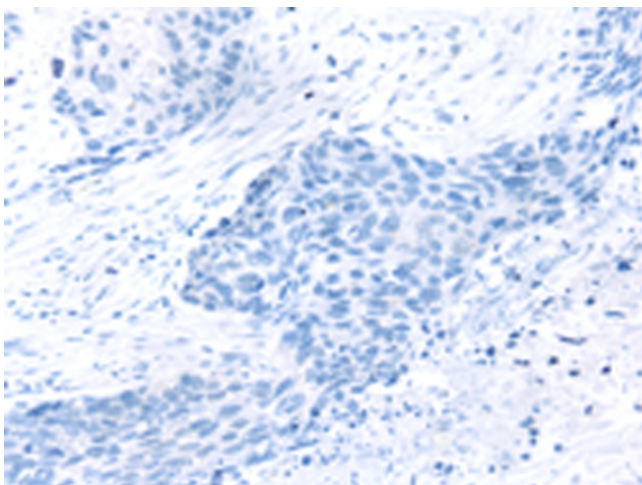
Immunohistochemistry of paraffin-embedded Human breast cancer tissue using [TA364996] (SAMD3 Antibody) at dilution 1/30 (Original magnification:  $\times 200$ )



Immunohistochemistry of paraffin-embedded Human breast cancer tissue using [TA364996] (SAMD3 Antibody) at dilution 1/30, treated with fusion protein. (Original magnification:  $\times 200$ )



Immunohistochemistry of paraffin-embedded Human esophagus cancer tissue using [TA364996] (SAMD3 Antibody) at dilution 1/30 (Original magnification: ×200)



Immunohistochemistry of paraffin-embedded Human esophagus cancer tissue using [TA364996] (SAMD3 Antibody) at dilution 1/30, treated with fusion protein. (Original magnification: ×200)