

Product datasheet for **TA364995**

SAA4 Rabbit Polyclonal Antibody

Product data:

Product Type:	Primary Antibodies
Applications:	IHC, WB
Recommended Dilution:	WB: 500-2000 WB positive control: Human normal stomach tissue lysate IHC: 25-100 Positive control: Human cervical cancer Predicted cell location: Secreted
Reactivity:	Human
Host:	Rabbit
Isotype:	IgG
Clonality:	Polyclonal
Immunogen:	Full length fusion protein
Formulation:	pH7.4 PBS, 0.05% NaN ₃ , 40% Glycerol
Concentration:	lot specific
Purification:	Antigen affinity purification
Conjugation:	Unconjugated
Storage:	Store at -20°C.
Stability:	1 year
Predicted Protein Size:	15 kDa
Gene Name:	serum amyloid A4, constitutive
Database Link:	Entrez Gene 6291 Human P35542



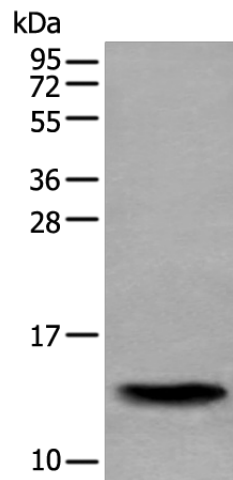
[View online »](#)

Background:

SAA4 is a member of the SAA family. SAA proteins are a family of apolipoproteins of high density lipoprotein (HDL). They can be separated into two distinct groups. First group (SAA1, SAA2, and SAA3) consists of acute phase reactant whose expression level increases in the blood in a response to trauma, infection, inflammation, and neoplasia. These acute phase SAAs associate with HDL during inflammation and remodel the HDL particle by displacing Apo-A1. The second distinct group consists of SAA4 and SAA5 which exist as the minor apolipoproteins on HDL, but this group of SAA constitutes more than 90% of all the SAA during homeostasis, and it is thought to play a role in the normal functioning of the HDL particle. SAA4 is a constitutively expressed protein which is expressed only in humans and mice. It is connected almost completely with lipoproteins of the high density range. The physiological function of SAA4 is unknown, and its serum concentration has no association with those of other major apolipoproteins.

Synonyms:

C-SAA; CSAA

Product images:

Gel: 12%SDS-PAGE

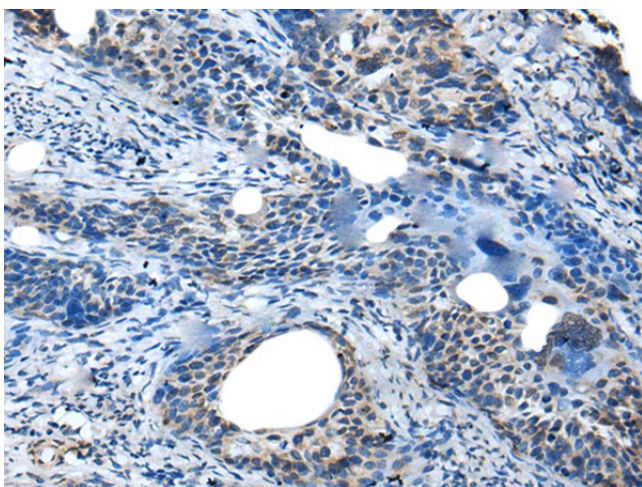
Lysate: 40 µg

Lane: Human normal stomach tissue lysate

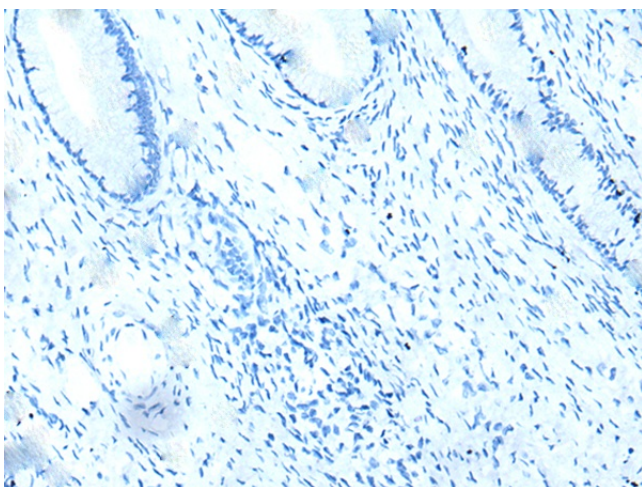
Primary antibody: TA364995 (SAA4 Antibody) at dilution 1/350

Secondary antibody: Goat anti rabbit IgG at 1/8000 dilution

Exposure time: 5 minutes



Immunohistochemistry of paraffin-embedded Human cervical cancer tissue using TA364995 (SAA4 Antibody) at dilution 1/35 (Original magnification: $\times 200$)



Immunohistochemistry of paraffin-embedded Human cervical cancer tissue using TA364995 (SAA4 Antibody) at dilution 1/35, treated with fusion protein. (Original magnification: $\times 200$)