

## Product datasheet for **TA364992**

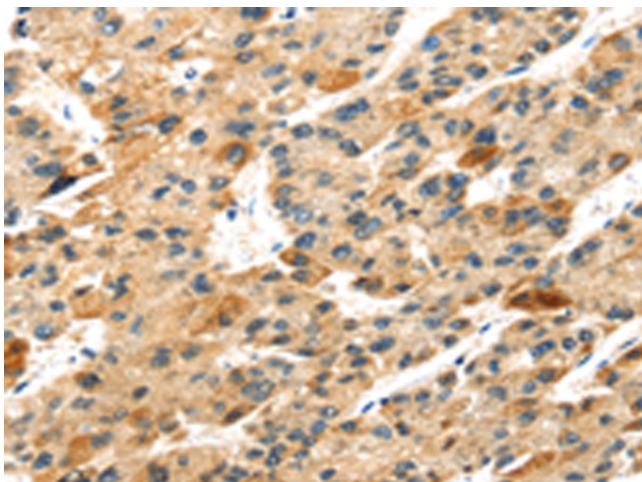
### **S100 calcium binding protein A14 (S100A14) Rabbit Polyclonal Antibody**

#### **Product data:**

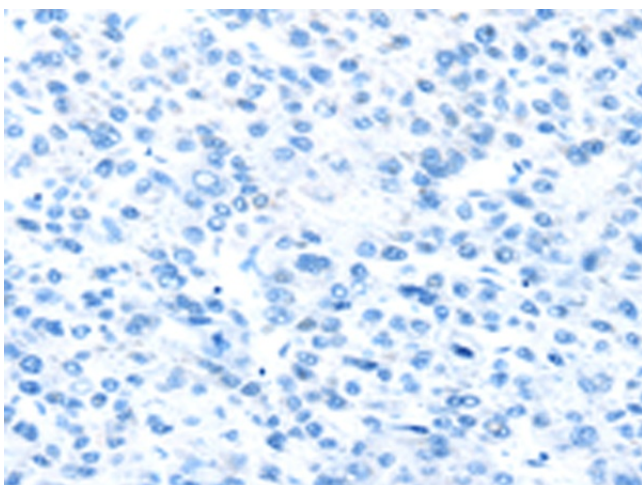
|                              |  |
|------------------------------|--|
| <b>Product Type:</b>         | Primary Antibodies   |
| <b>Applications:</b>         | IHC  |
| <b>Recommended Dilution:</b> | IHC: 25-100<br>Positive control: Human liver cancer<br>Predicted cell location: Cytoplasm  |
| <b>Reactivity:</b>           | Human, Mouse   |
| <b>Host:</b>                 | Rabbit   |
| <b>Isotype:</b>              | IgG  |
| <b>Clonality:</b>            | Polyclonal   |
| <b>Immunogen:</b>            | Fusion protein of human S100A14  |
| <b>Formulation:</b>          | pH7.4 PBS, 0.05% NaN <sub>3</sub> , 40% Glycerol   |
| <b>Concentration:</b>        | lot specific   |
| <b>Purification:</b>         | Antigen affinity purification  |
| <b>Conjugation:</b>          | Unconjugated   |
| <b>Storage:</b>              | Store at -20°C.  |
| <b>Stability:</b>            | 1 year   |
| <b>Gene Name:</b>            | S100 calcium binding protein A14   |
| <b>Database Link:</b>        | <a href="#">Entrez Gene 57402 Human Q9HCY8</a>   |
| <b>Background:</b>           | This gene encodes a member of the S100 protein family which contains an EF-hand motif and binds calcium. The gene is located in a cluster of S100 genes on chromosome 1. Levels of the encoded protein have been found to be lower in cancerous tissue and associated with metastasis suggesting a tumor suppressor function |
| <b>Synonyms:</b>             | BCMP84; OTTHUMP00000032965; OTTHUMP00000032966; S100A15; S114  |



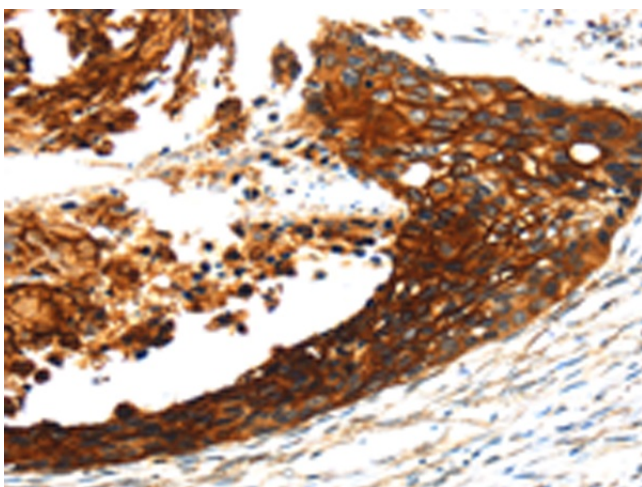
[View online »](#)

**Product images:**

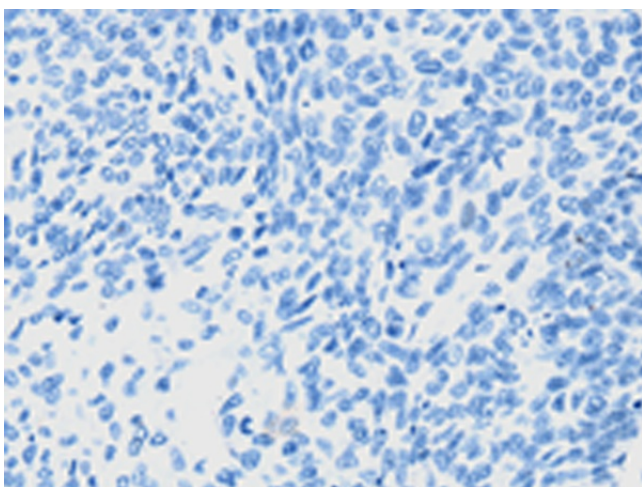
Immunohistochemistry of paraffin-embedded Human liver cancer tissue using TA364992 (S100A14 Antibody) at dilution 1/30 (Original magnification:  $\times 200$ )



Immunohistochemistry of paraffin-embedded Human liver cancer tissue using TA364992 (S100A14 Antibody) at dilution 1/30, treated with fusion protein. (Original magnification:  $\times 200$ )



Immunohistochemistry of paraffin-embedded Human esophagus cancer tissue using TA364992 (S100A14 Antibody) at dilution 1/30 (Original magnification:  $\times 200$ )



Immunohistochemistry of paraffin-embedded Human esophagus cancer tissue using TA364992 (S100A14 Antibody) at dilution 1/30, treated with fusion protein. (Original magnification:  $\times 200$ )