

Product datasheet for **TA364991S**

beta V Tubulin (TUBB) Rabbit Polyclonal Antibody

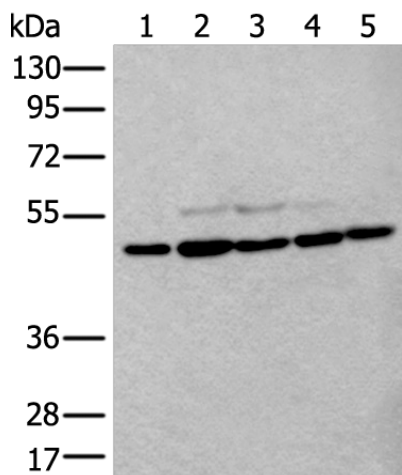
Product data:

Product Type:	Primary Antibodies
Applications:	IHC, WB
Recommended Dilution:	WB: 500-2000 WB positive control: NIH/3T3□HEPG2□Hela and 293T cell□Mouse brain tissue lysates IHC: 25-100 Positive control: Human cervical cancer Predicted cell location: Cytoplasm
Reactivity:	Human
Host:	Rabbit
Isotype:	IgG
Clonality:	Polyclonal
Immunogen:	Full length fusion protein
Formulation:	pH7.4 PBS, 0.05% NaN ₃ , 40% Glycerol
Purification:	Antigen affinity purification
Conjugation:	Unconjugated
Storage:	Store at -20°C.
Stability:	1 year
Predicted Protein Size:	50 kDa
Gene Name:	tubulin beta class I
Database Link:	Entrez Gene 203068 Human P07437
Background:	This gene encodes a beta tubulin protein. This protein forms a dimer with alpha tubulin and acts as a structural component of microtubules. Mutations in this gene cause cortical dysplasia, complex, with other brain malformations 6. Alternative splicing results in multiple splice variants. There are multiple pseudogenes for this gene on chromosomes 1, 6, 7, 8, 9, and 13.
Synonyms:	M40; MGC16435; MGC117247; OK/SW-cl.56; TUBB1; TUBB5

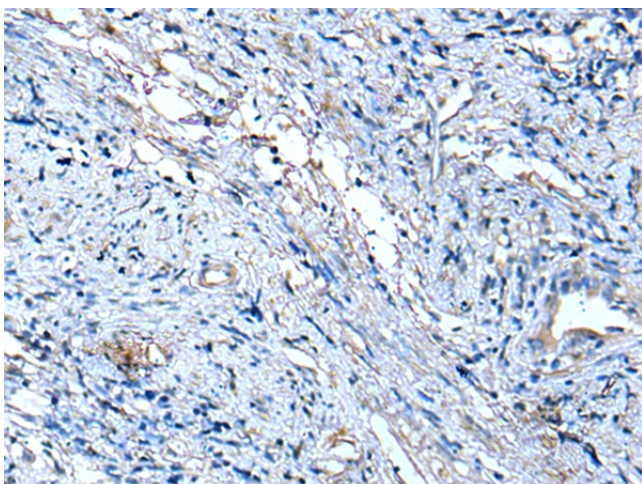


[View online »](#)

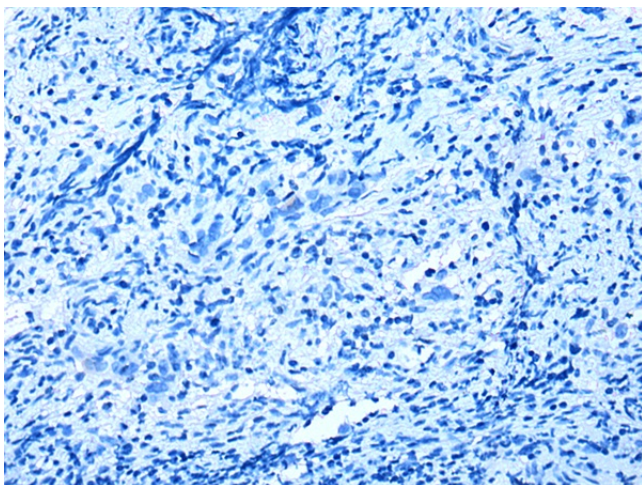
Product images:



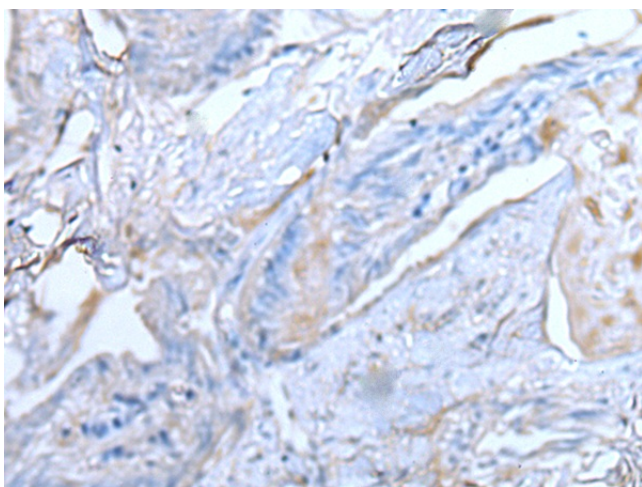
Gel: 8%SDS-PAGE
Lysate: 40 μ g
Lane 1-5: NIH/3T3
HEPG2
Hela and 293T cell
Mouse brain tissue lysates
Primary antibody: [TA364991] (TUBB Antibody) at
dilution 1/300
Secondary antibody: Goat anti rabbit IgG at
1/8000 dilution
Exposure time: 10 seconds



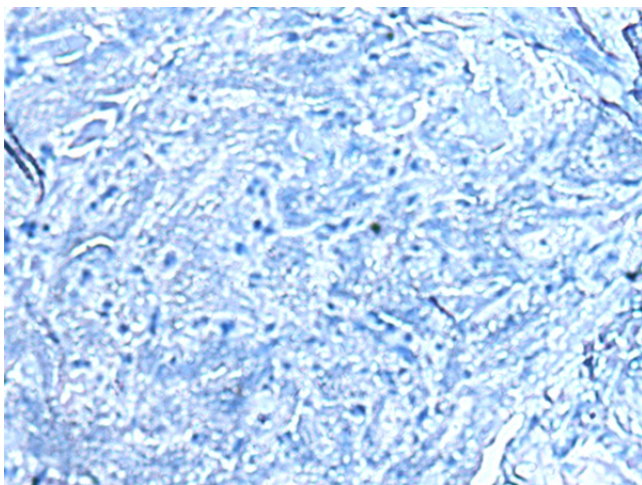
Immunohistochemistry of paraffin-embedded
Human cervical cancer tissue using [TA364991]
(TUBB Antibody) at dilution 1/30 (Original
magnification: \times 200)



Immunohistochemistry of paraffin-embedded Human cervical cancer tissue using [TA364991] (TUBB Antibody) at dilution 1/30, treated with fusion protein. (Original magnification: ×200)



Immunohistochemistry of paraffin-embedded Human thyroid cancer tissue using [TA364991] (TUBB Antibody) at dilution 1/30 (Original magnification: ×200)



Immunohistochemistry of paraffin-embedded Human thyroid cancer tissue using [TA364991] (TUBB Antibody) at dilution 1/30, treated with fusion protein. (Original magnification: ×200)