

Product datasheet for **TA364988S**

RPS3 Rabbit Polyclonal Antibody

Product data:

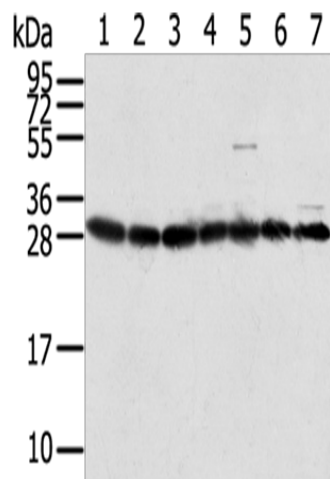
Product Type:	Primary Antibodies
Applications:	IHC, WB
Recommended Dilution:	WB: 500-2000 WB positive control: HepG2, Jurkat, HeLa, Raji, RAW264.7, A549 and 293T cells IHC: 25-100 Positive control: Human breast cancer Predicted cell location: Cytoplasm
Reactivity:	Human, Mouse, Rat
Host:	Rabbit
Isotype:	IgG
Clonality:	Polyclonal
Immunogen:	Full length fusion protein
Formulation:	pH7.4 PBS, 0.05% NaN ₃ , 40% Glycerol
Purification:	Antigen affinity purification
Conjugation:	Unconjugated
Storage:	Store at -20°C.
Stability:	1 year
Predicted Protein Size:	27 kDa
Gene Name:	ribosomal protein S3
Database Link:	Entrez Gene 6188 Human P23396
Background:	Ribosomes, the organelles that catalyze protein synthesis, consist of a small 40S subunit and a large 60S subunit. Together these subunits are composed of 4 RNA species and approximately 80 structurally distinct proteins. This gene encodes a ribosomal protein that is a component of the 40S subunit, where it forms part of the domain where translation is initiated. The protein belongs to the S3P family of ribosomal proteins. Studies of the mouse and rat proteins have demonstrated that the protein has an extraribosomal role as an endonuclease involved in the repair of UV-induced DNA damage.



[View online »](#)

Synonyms: FLJ26283; FLJ27450; MGC87870

Product images:



Gel: 12%SDS-PAGE

Lysate: 40 μ g

Lane 1-7: HepG2 cells

Jurkat cells

Hela cells

Raji cells

RAW264.7 cells

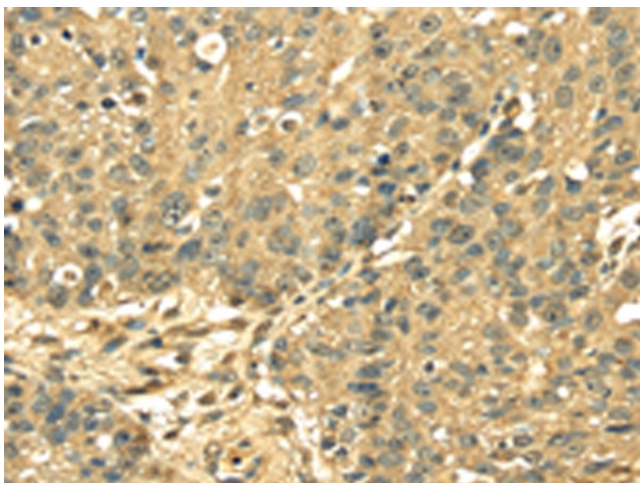
A549 cells

293T cells

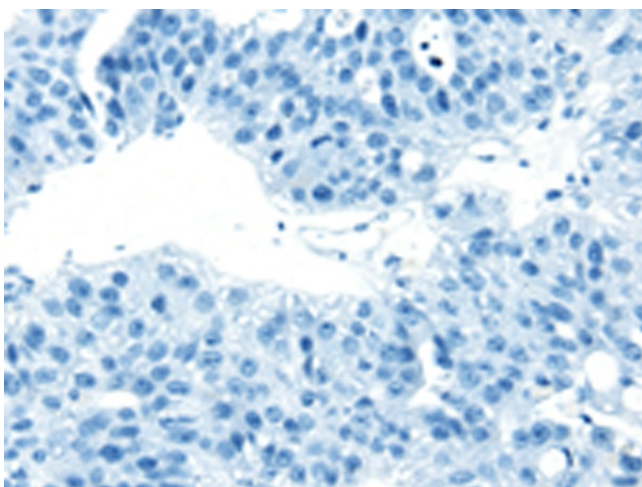
Primary antibody: [TA364988] (RPS3 Antibody) at dilution 1/350

Secondary antibody: Goat anti rabbit IgG at 1/8000 dilution

Exposure time: 10 seconds



Immunohistochemistry of paraffin-embedded Human breast cancer tissue using [TA364988] (RPS3 Antibody) at dilution 1/25 (Original magnification: \times 200)



Immunohistochemistry of paraffin-embedded Human breast cancer tissue using [TA364988] (RPS3 Antibody) at dilution 1/25, treated with fusion protein. (Original magnification: ×200)