

Product datasheet for **TA364986**

RPL15 Rabbit Polyclonal Antibody

Product data:

Product Type:	Primary Antibodies
Applications:	IHC
Recommended Dilution:	IHC: 50-200 Positive control: Human liver cancer Predicted cell location: Cytoplasm
Reactivity:	Human, Mouse, Rat
Host:	Rabbit
Isotype:	IgG
Clonality:	Polyclonal
Immunogen:	Fusion protein of human RPL15
Formulation:	pH7.4 PBS, 0.05% NaN ₃ , 40% Glycerol
Concentration:	lot specific
Purification:	Antigen affinity purification
Conjugation:	Unconjugated
Storage:	Store at -20°C.
Stability:	1 year
Gene Name:	ribosomal protein L15
Database Link:	Entrez Gene 6138 Human P61313

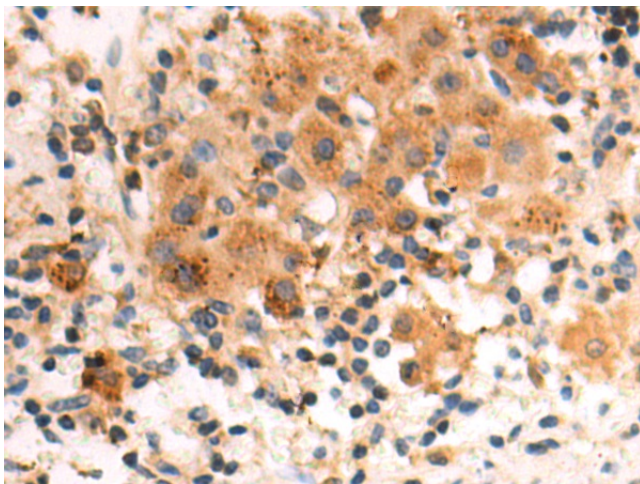
Background: Ribosomes, the organelles that catalyze protein synthesis, consist of a small 40S subunit and a large 60S subunit. Together these subunits are composed of four RNA species and approximately 80 structurally distinct proteins. This gene encodes a member of the L15E family of ribosomal proteins and a component of the 60S subunit. This gene shares sequence similarity with the yeast ribosomal protein YL10 gene. Elevated expression of this gene has been observed in esophageal tumors and gastric cancer tissues, and deletion of this gene has been observed in a Diamond-Blackfan anemia (DBA) patient. As is typical for genes encoding ribosomal proteins, there are multiple processed pseudogenes of this gene dispersed through the genome.



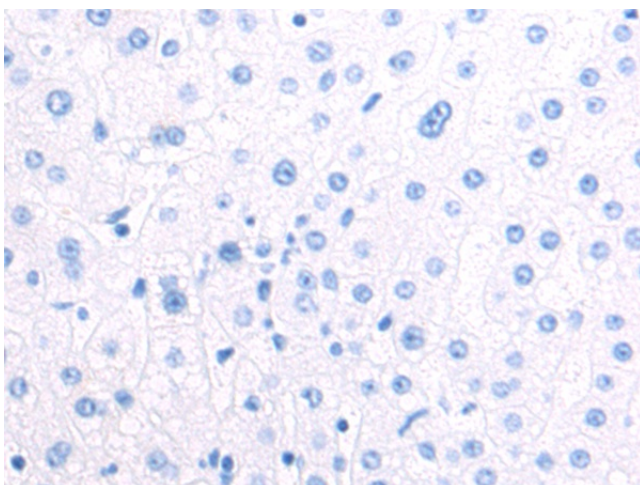
[View online »](#)

Synonyms: EC45; FLJ26304; MGC88603; OTTHUMP00000208329; OTTHUMP00000208330; OTTHUMP00000208401; RPL10; RPLY10; RPYL10

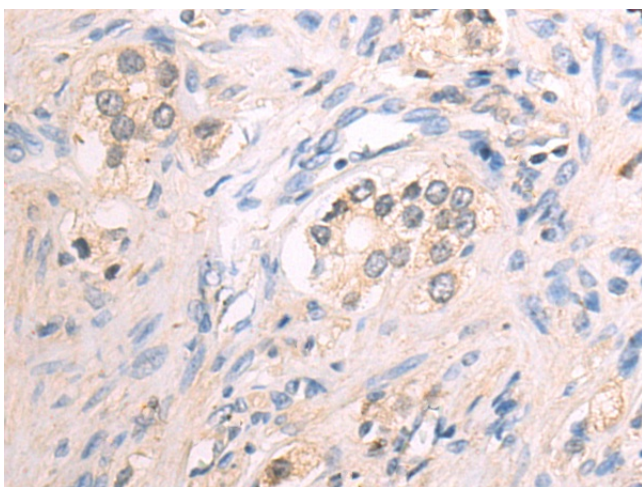
Product images:



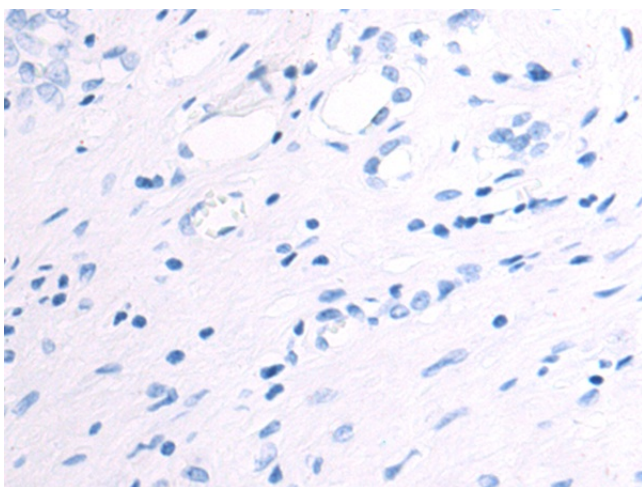
Immunohistochemistry of paraffin-embedded Human liver cancer tissue using TA364986 (RPL15 Antibody) at dilution 1/50 (Original magnification: $\times 200$)



Immunohistochemistry of paraffin-embedded Human liver cancer tissue using TA364986 (RPL15 Antibody) at dilution 1/50, treated with fusion protein. (Original magnification: $\times 200$)



Immunohistochemistry of paraffin-embedded Human prostate cancer tissue using TA364986 (RPL15 Antibody) at dilution 1/50 (Original magnification: $\times 200$)



Immunohistochemistry of paraffin-embedded Human prostate cancer tissue using TA364986 (RPL15 Antibody) at dilution 1/50, treated with fusion protein. (Original magnification: $\times 200$)