

## Product datasheet for **TA364979**

### RNF20 Rabbit Polyclonal Antibody

#### Product data:

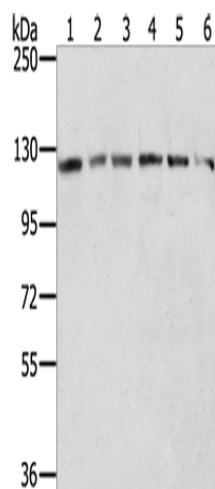
|                         |   |
|-------------------------|---|
| Product Type:           | Primary Antibodies  |
| Applications:           | IHC, WB   |
| Recommended Dilution:   | WB: 500-2000<br>WB positive control: Hela, Jurkat, 231, A375, A172 and Lovo cells<br>IHC: 10-50<br>Positive control: Human esophagus cancer<br>Predicted cell location: Nucleus   |
| Reactivity:             | Human, Mouse  |
| Host:                   | Rabbit  |
| Isotype:                | IgG   |
| Clonality:              | Polyclonal  |
| Immunogen:              | Fusion protein of human RNF20   |
| Formulation:            | pH7.4 PBS, 0.05% NaN <sub>3</sub> , 40% Glycerol  |
| Concentration:          | lot specific  |
| Purification:           | Antigen affinity purification   |
| Conjugation:            | Unconjugated  |
| Storage:                | Store at -20°C.   |
| Stability:              | 1 year  |
| Predicted Protein Size: | 114 kDa   |
| Gene Name:              | ring finger protein 20  |
| Database Link:          | <a href="#">Entrez Gene 56254 Human Q5VTR2</a>  |
| Background:             | The protein encoded by this gene shares similarity with BRE1 of <i>S. cerevisiae</i> . The protein encoded by this human gene is an E3 ubiquitin ligase that regulates chromosome structure by monoubiquitinating histone H2B. This protein acts as a putative tumor suppressor and positively regulates the p53 tumor suppressor as well as numerous histone H2A and H2B genes. In contrast, this protein also suppresses the expression of several protooncogenes and growth-related genes, including many genes that are induced by epidermal growth factor. |



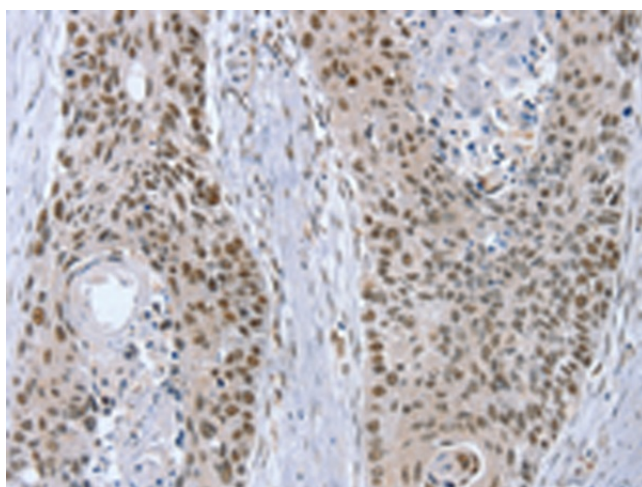
[View online »](#)

**Synonyms:** BRE1; BRE1-A; BRE1A; FLJ11189; FLJ20382; hBRE1; KAIA2779; KIAA2779; MGC129667; MGC129668

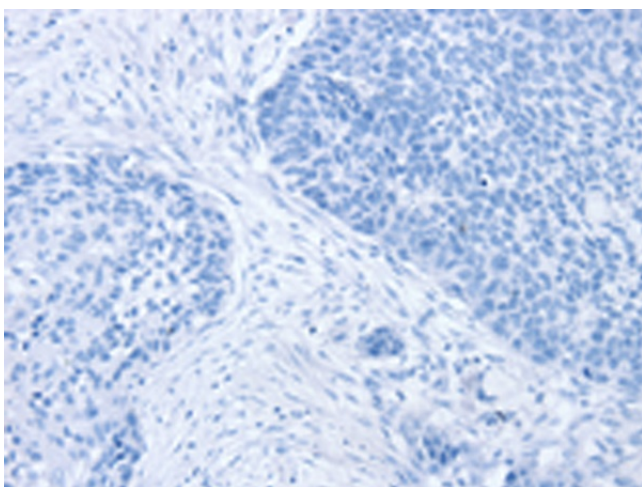
**Product images:**



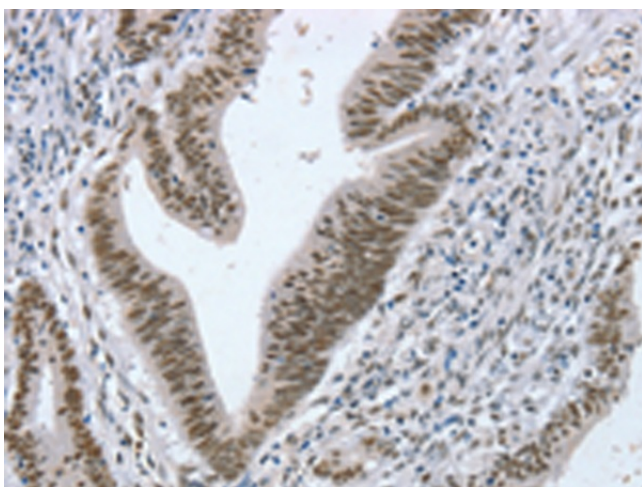
Gel: 6%SDS-PAGE  
Lysate: 40  $\mu$ g  
Lane 1-6: HeLa cells  
Jurkat cells  
231 cells  
A375 cells  
A172 cells  
Lovo cells  
Primary antibody: TA364979 (RNF20 Antibody) at dilution 1/300  
Secondary antibody: Goat anti rabbit IgG at 1/8000 dilution  
Exposure time: 5 seconds



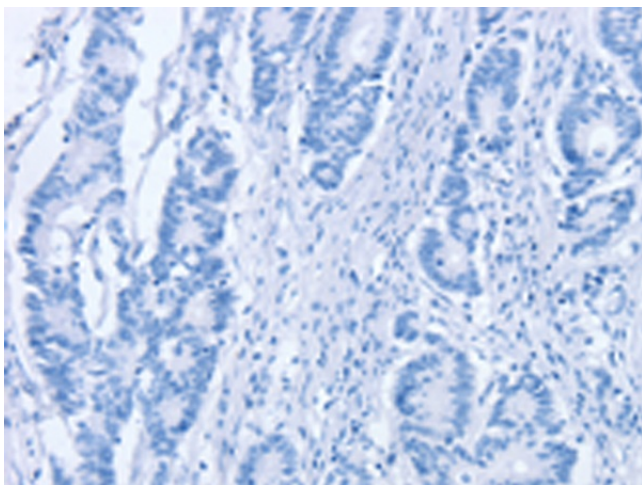
Immunohistochemistry of paraffin-embedded Human esophagus cancer tissue using TA364979 (RNF20 Antibody) at dilution 1/20 (Original magnification:  $\times$ 200)



Immunohistochemistry of paraffin-embedded Human esophagus cancer tissue using TA364979 (RNF20 Antibody) at dilution 1/20, treated with fusion protein. (Original magnification:  $\times 200$ )



Immunohistochemistry of paraffin-embedded Human colon cancer tissue using TA364979 (RNF20 Antibody) at dilution 1/20 (Original magnification:  $\times 200$ )



Immunohistochemistry of paraffin-embedded Human colon cancer tissue using TA364979 (RNF20 Antibody) at dilution 1/20, treated with fusion protein. (Original magnification:  $\times 200$ )