

Product datasheet for **TA364969S**

RGS6 Rabbit Polyclonal Antibody

Product data:

Product Type:	Primary Antibodies
Applications:	IHC, WB
Recommended Dilution:	WB: 1000-5000 WB positive control: Mouse brain tissue lysate IHC: 150-300 Positive control: Human gastric cancer Predicted cell location: Cytoplasm and Nucleus
Reactivity:	Human, Mouse
Host:	Rabbit
Isotype:	IgG
Clonality:	Polyclonal
Immunogen:	Fusion protein of human RGS6
Formulation:	pH7.4 PBS, 0.05% NaN ₃ , 40% Glycerol
Purification:	Antigen affinity purification
Conjugation:	Unconjugated
Storage:	Store at -20°C.
Stability:	1 year
Predicted Protein Size:	54 kDa
Gene Name:	regulator of G-protein signaling 6
Database Link:	Entrez Gene 9628 Human P49758



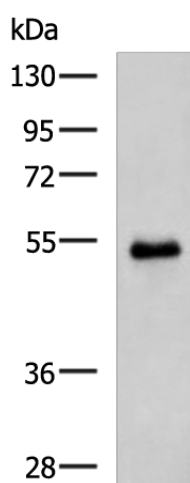
[View online »](#)

Background:

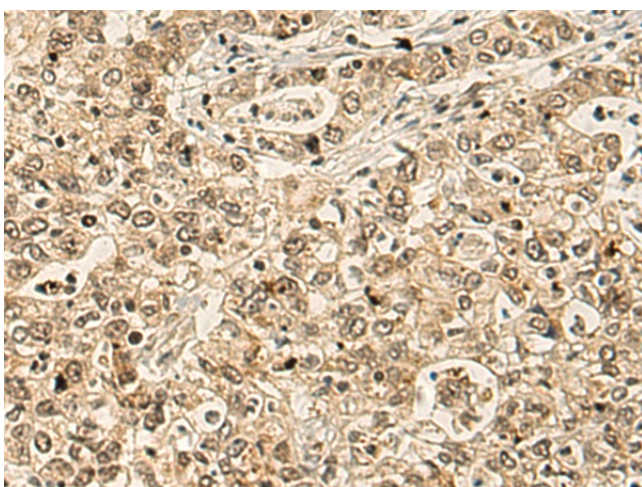
This gene encodes a member of the RGS (regulator of G protein signaling) family of proteins, which are defined by the presence of a RGS domain that confers the GTPase-activating activity of these proteins toward certain G alpha subunits. This protein also belongs to a subfamily of RGS proteins characterized by the presence of DEP and GGL domains, the latter a G beta 5-interacting domain. The RGS proteins negatively regulate G protein signaling, and may modulate neuronal, cardiovascular, lymphocytic activities, and cancer risk. Many alternatively spliced transcript variants encoding different isoforms with long or short N-terminal domains, complete or incomplete GGL domains, and distinct C-terminal domains, have been described for this gene, however, the full-length nature of some of these variants is not known.

Synonyms:

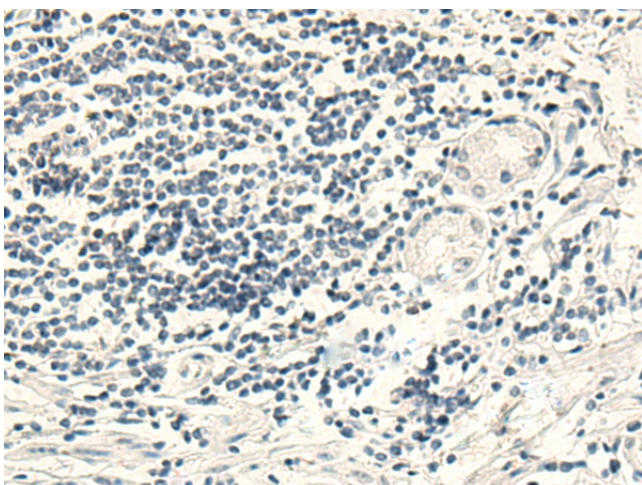
DKFZp313G1241; FLJ43552; GAP; H_DJ0283M22.1; H_DJ1108A12.1; MGC142132; S914; WUGSC:H_DJ0283M22.1; WUGSC:H_DJ1108A12.1

Product images:

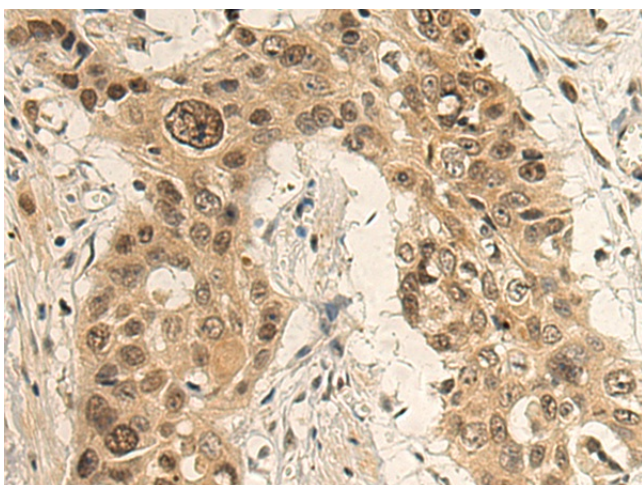
Gel: 8%SDS-PAGE
Lysate: 40 µg
Lane: Mouse brain tissue lysate
Primary antibody: [TA364969] (RGS6 Antibody) at dilution 1/1000
Secondary antibody: Goat anti rabbit IgG at 1/5000 dilution
Exposure time: 30 seconds



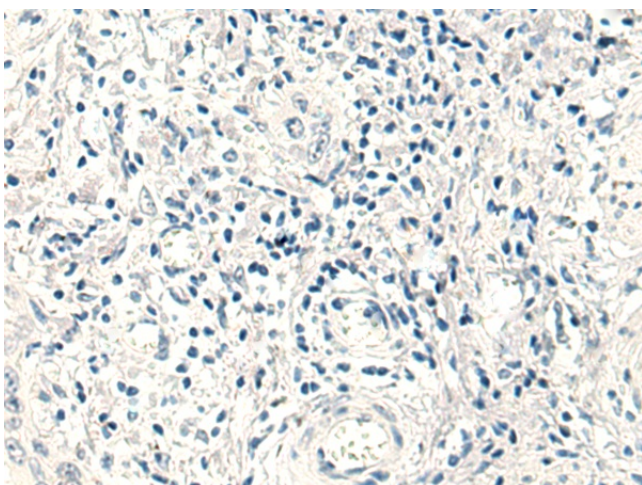
Immunohistochemistry of paraffin-embedded Human gastric cancer tissue using [TA364969] (RGS6 Antibody) at dilution 1/180 (Original magnification: ×200)



Immunohistochemistry of paraffin-embedded Human gastric cancer tissue using [TA364969] (RGS6 Antibody) at dilution 1/180, treated with fusion protein. (Original magnification: ×200)



Immunohistochemistry of paraffin-embedded Human esophagus cancer tissue using [TA364969] (RGS6 Antibody) at dilution 1/180 (Original magnification: ×200)



Immunohistochemistry of paraffin-embedded Human esophagus cancer tissue using [TA364969] (RGS6 Antibody) at dilution 1/180, treated with fusion protein. (Original magnification: ×200)