

## Product datasheet for **TA364962**

### RBBP9 Rabbit Polyclonal Antibody

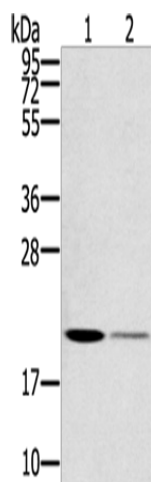
#### Product data:

Product Type:	Primary Antibodies
Applications:	WB
Recommended Dilution:	WB: 200-1000 WB positive control: Mouse kidney tissue and A375 cells
Reactivity:	Human, Mouse, Rat
Host:	Rabbit
Isotype:	IgG
Clonality:	Polyclonal
Immunogen:	Fusion protein of human RBBP9
Formulation:	pH7.4 PBS, 0.05% NaN <sub>3</sub> , 40% Glycerol
Concentration:	lot specific
Purification:	Antigen affinity purification
Conjugation:	Unconjugated
Storage:	Store at -20°C.
Stability:	1 year
Predicted Protein Size:	21 kDa
Gene Name:	RB binding protein 9, serine hydrolase
Database Link:	<a href="#">Entrez Gene 10741 Human O75884</a>
Background:	The protein encoded by this gene is a retinoblastoma binding protein that may play a role in the regulation of cell proliferation and differentiation. Two alternatively spliced transcript variants of this gene with identical predicted protein products have been reported, one of which is a nonsense-mediated decay candidate.
Synonyms:	BOG; MGC9236; RBBP-9; RBBP-10; RBBP10



[View online »](#)

## Product images:



Gel: 12%SDS-PAGE

Lysate: 40  $\mu$ g

Lane 1-2: Mouse kidney tissue  
A375 cells

Primary antibody: TA364962 (RBBP9 Antibody) at  
dilution 1/400

Secondary antibody: Goat anti rabbit IgG at  
1/8000 dilution

Exposure time: 1 minute